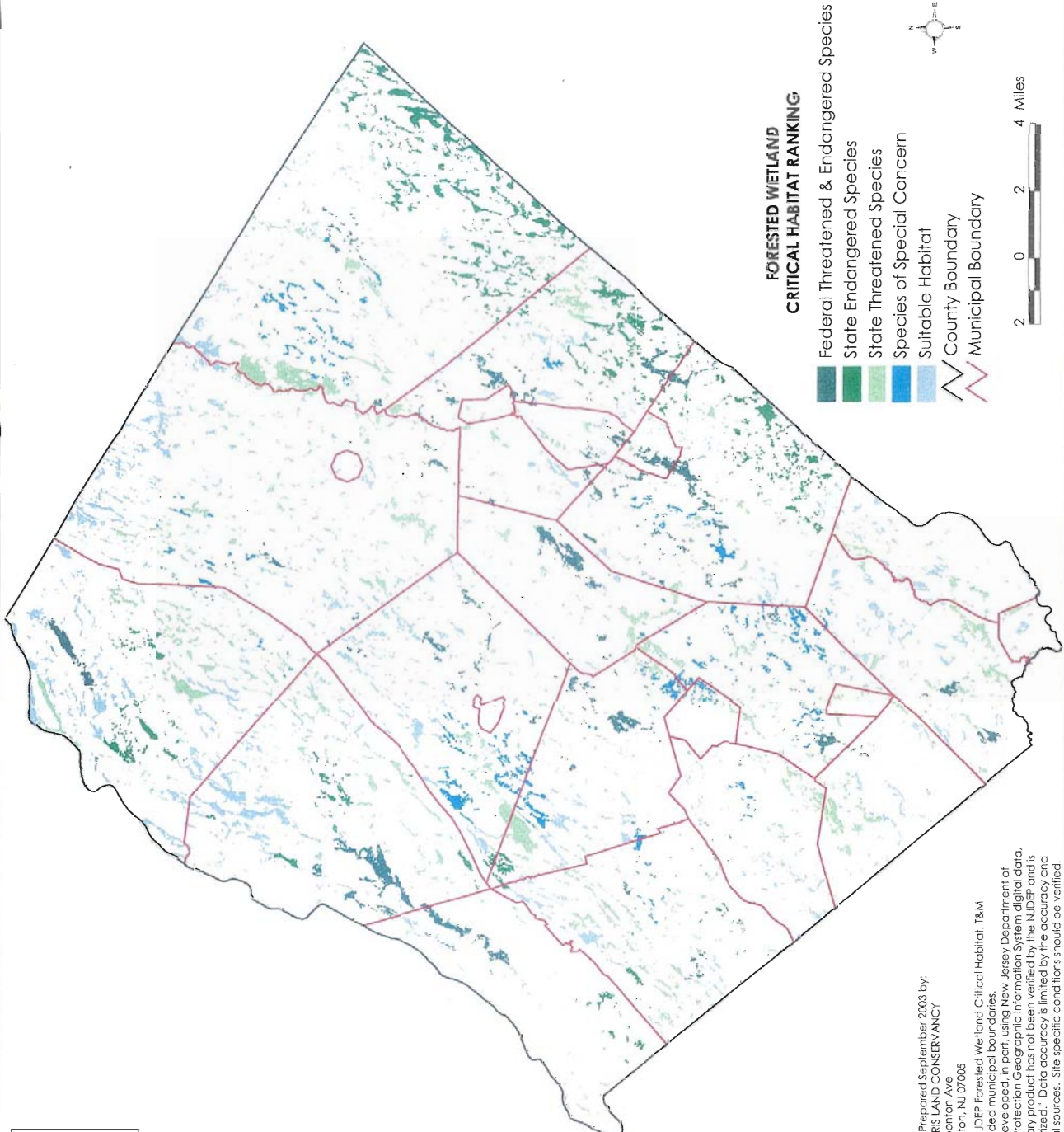
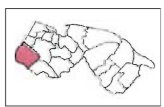


MAP 21:
 Forested Wetland Habitat
 for Threatened &
 Endangered Species
 in
 Sussex County



**FORESTED WETLAND
 CRITICAL HABITAT RANKING**

- Federal Threatened & Endangered Species
- State Endangered Species
- State Threatened Species
- Species of Special Concern
- Suitable Habitat
- County Boundary
- Municipal Boundary



Map Prepared September 2003 by:
 MORRIS LAND CONSERVANCY
 19 Boonton Ave
 Boonton, NJ 07005



Data Sources: NJDEP Forested Wetland Critical Habitat, T&M Associates provided municipal boundaries.
 "This map was developed, in part, using New Jersey Department of Environmental Protection Geographic Information System digital data, but this secondary product has not been verified by the NJDEP and is not state-authorized." Data accuracy is limited by the accuracy and scales of original sources. Site specific conditions should be verified.