



DEPARTMENT OF ENGINEERING AND PLANNING
Division of Transportation Operations
One Spring Street
Newton, New Jersey 07860
973-579-0430
dpw@sussex.nj.us
Bob Pierce, Acting Division Director

Project Notice-CR 628 Closure for Emergent Bridge Work - Distributed April 14, 2025

Project:

Bridge X-13

Location: CR 628, South of the CR 628/635 Intersection in Wantage, NJ.

Contractor:

Sussex County Office of Bridge and Traffic Safety and Division of Public Works In-House Construction Crew

Project Funding:

Sussex County Engineering Capital Budget

Anticipated Schedule:

- Estimated Construction Start: On or about **April 21, 2025**
- Estimated Construction Completion: Approx. **5 day** from start of project

(Schedule subject to change based on unforeseen impacts)

Traffic Impacts:

- **Work will be performed under a full road closure with a posted detour**

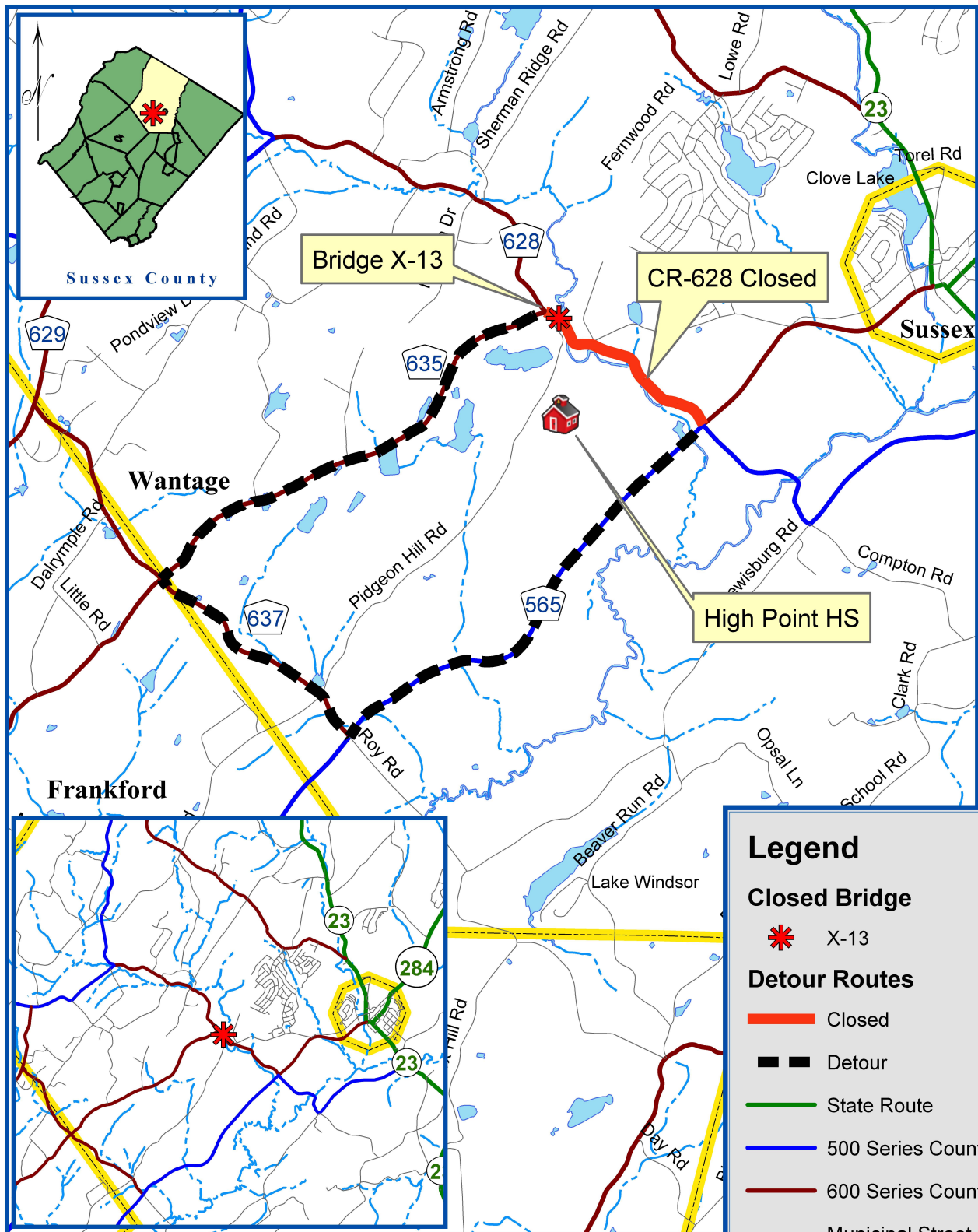
Construction Activities:

- Remove guiderail and excavate roadway
- Investigate and repair bridge deficiency under roadway
- Armor upstream wing walls with large stone
- Install guiderail and repair asphalt

Contact Information:

For more information about this project please feel free to contact Bob Pierce, Sussex County Acting Division Director of Transportation Operations at 973-579-0430 or email at dpw@sussex.nj.us





Sussex County Division of Engineering
 County Bridge X-13
 CR-628
 Location Map - Not to Scale

Legend

Closed Bridge

X-13

Detour Routes

Closed

Detour

State Route

500 Series County

600 Series County

Municipal Street

Muni Bndry

Lake

Stream