



DEPARTMENT OF ENGINEERING AND PLANNING  
Division of Engineering  
One Spring Street  
Newton, New Jersey 07860  
973-579-0430  
[dpw@sussex.nj.us](mailto:dpw@sussex.nj.us)  
Matthew R. Sinke, P.E.  
Division Director/Assistant County Engineer

## **Project Design Notice – Bridge C-09**

**Distributed: June 18, 2019**

### **Project:**

#### **Rehabilitation of Bridge C-09**

Carrying North Shore Road over Cranberry Lake Inlet, Byram Township

Bridge C-09 is a 25-foot long single span concrete slab bridge founded on cast-in-place concrete abutments situated on North Shore Road over Cranberry Lake Inlet in Byram Township. The bridge was constructed in 1938 and is structurally deficient and in overall poor condition primarily due to the condition of the superstructure and deck. The selected design option for the project is to repair the existing abutments/wingwalls and replace the superstructure/deck with precast slab beams and a bituminous wearing surface. The proposed bridge parapets are NJDOT 4-bar railings and end pylons with standard guide rail attachments.

### **Designer:**

Genesis Engineering, LLC, Lafayette Township, NJ

### **Preliminary Schedule:**

- ✓ Preliminary Scoping – *Completed*
- ✓ Preliminary Design – *Completed*
- Permit Applications – *In Progress*
- Final Design – *In Progress*
- Public Bidding – *Spring 2020*
- Bridge Construction – *Fall 2020*

### **Construction Funding:**

**Preliminary Estimated Construction Cost:** \$400,000.00

**Funding Source(s):** Approved NJDOT 2018 Local Bridge Fund Grant – \$400,000.00

### **Traffic Impacts:**

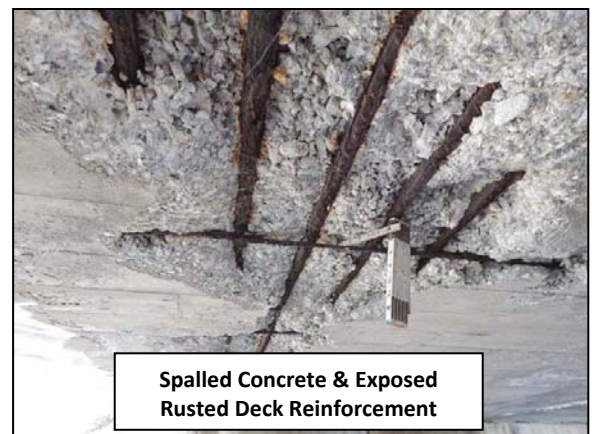
Construction will be staged to permit passage of a single lane of alternating traffic for the duration of construction.



North Shore Road Looking North over Bridge C-09



Bridge Elevation View Looking West



Spalled Concrete & Exposed Rusted Deck Reinforcement

For more information about this project please feel free to contact Chris Lautz, E.I.T., at the Sussex County Division of Engineering at 973-579-0430 or [dpw@sussex.nj.us](mailto:dpw@sussex.nj.us)

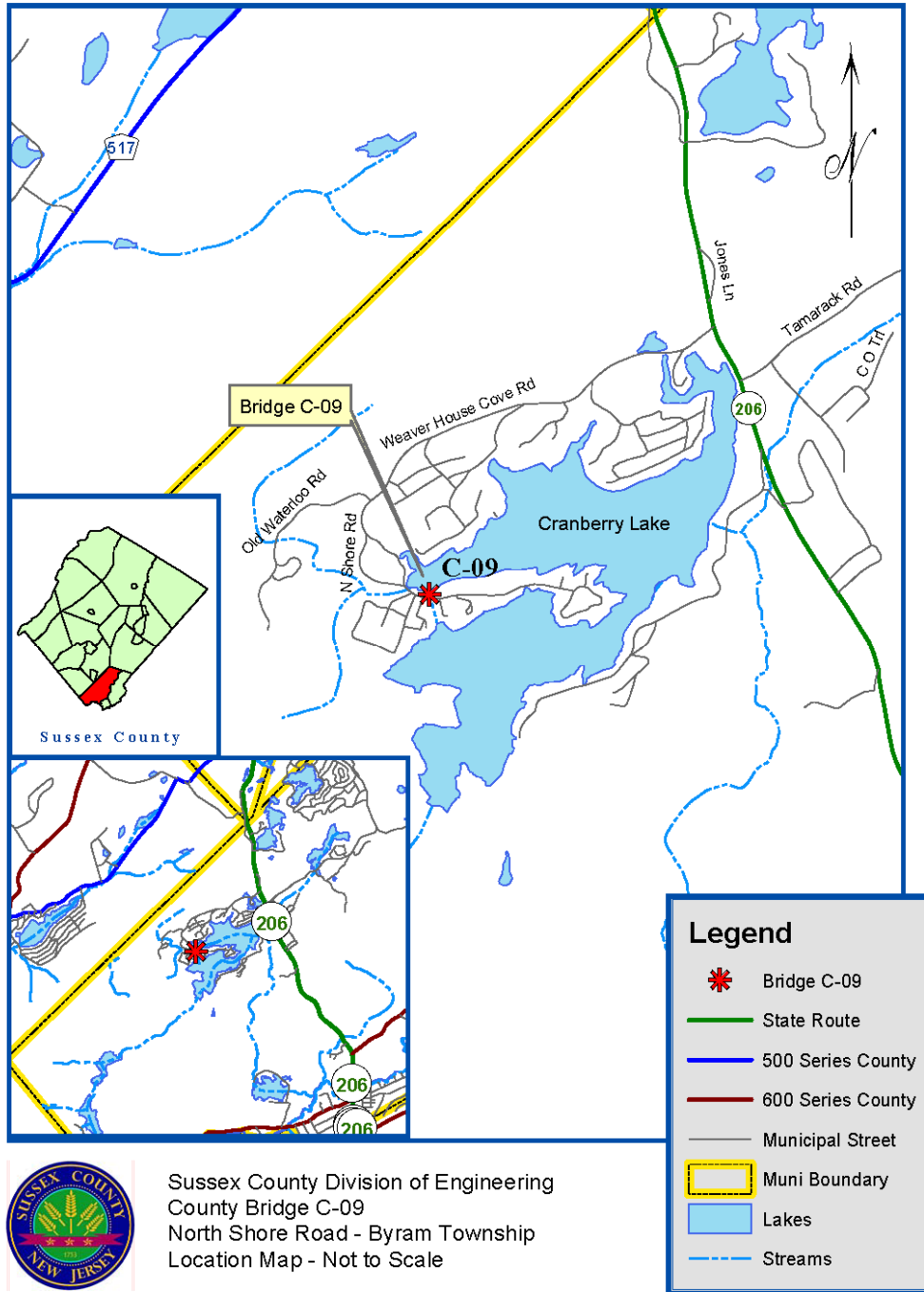


DEPARTMENT OF ENGINEERING AND PLANNING  
 Division of Engineering  
 One Spring Street  
 Newton, New Jersey 07860  
 973-579-0430  
[dpw@sussex.nj.us](mailto:dpw@sussex.nj.us)  
 Matthew R. Sinke, P.E.  
 Division Director/Assistant County Engineer

**Project Design Notice – Bridge C-09**

**Distributed: June 18, 2019**

*Location Map*



Sussex County Division of Engineering  
 County Bridge C-09  
 North Shore Road - Byram Township  
 Location Map - Not to Scale