



DEPARTMENT OF ENGINEERING AND PLANNING
Division of Engineering
One Spring Street
Newton, New Jersey 07860
973-579-0430
dpw@sussex.nj.us
Matthew R. Sinke, P.E.
Division Director/Assistant County Engineer

Design Notice – Bridge C-18 Rehabilitation

Distributed: April 9, 2019

Project:

Rehabilitation of Bridge C-18

Carrying Roseville Road over Wolf Lake Inlet, Byram Township

Bridge C-18 is a 30-foot long two-cell reinforced concrete box culvert founded on piles below the center and side walls, situated on Roseville Road over Wolf Lake Inlet in Byram Township. The bridge was constructed in 1910 as part of the Lackawanna Cutoff Railroad Line built by the Delaware, Lackawanna & Western Railroad between 1908 and 1911. The structure is structurally deficient due to the condition of the culvert and functionally obsolete due to the intolerable approach alignment.

The rehabilitation will involve clearing debris and sediment from the culvert cells and repairing areas of rusted reinforcing steel and spalled concrete as well as reconstructing both bridge headwalls.

Designer:

Genesis Engineering, LLC, Lafayette Township, NJ

Preliminary Schedule:

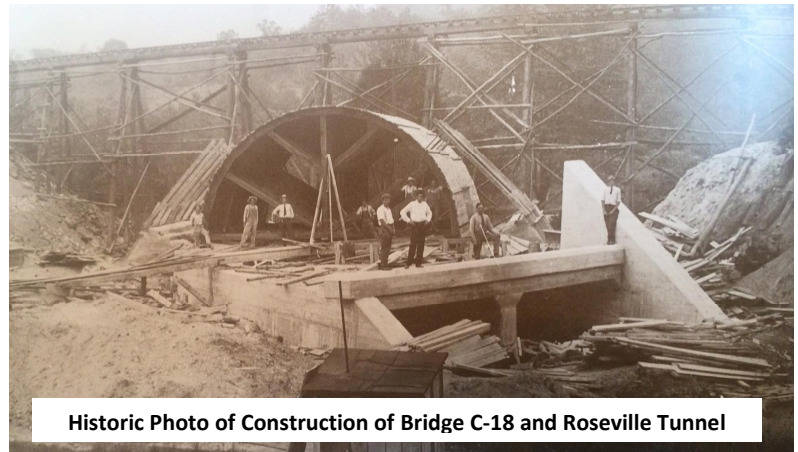
- ✓ Preliminary Design – *Completed*
- ✓ Permit Applications – *Completed*
- Final Design – *Active*
- Public Bidding – Late Summer 2019
- Bridge Construction – 2019-2020

Construction Funding:

Preliminary Estimated Construction Cost: \$550,000
FY 2017 NJDOT LBFN Disc Grant: \$470,000

Traffic Impacts:

A single lane traffic flagging operation will be implemented throughout the duration of construction as necessary.



Historic Photo of Construction of Bridge C-18 and Roseville Tunnel



Downstream view of Bridge C-18



Upstream view of Wolf Lake Inlet from Bridge C-18

For more information about this project please feel free to contact Susan Delmar, P.E., at the Sussex County Division of Engineering at 973-579-0430 or dpw@sussex.nj.us

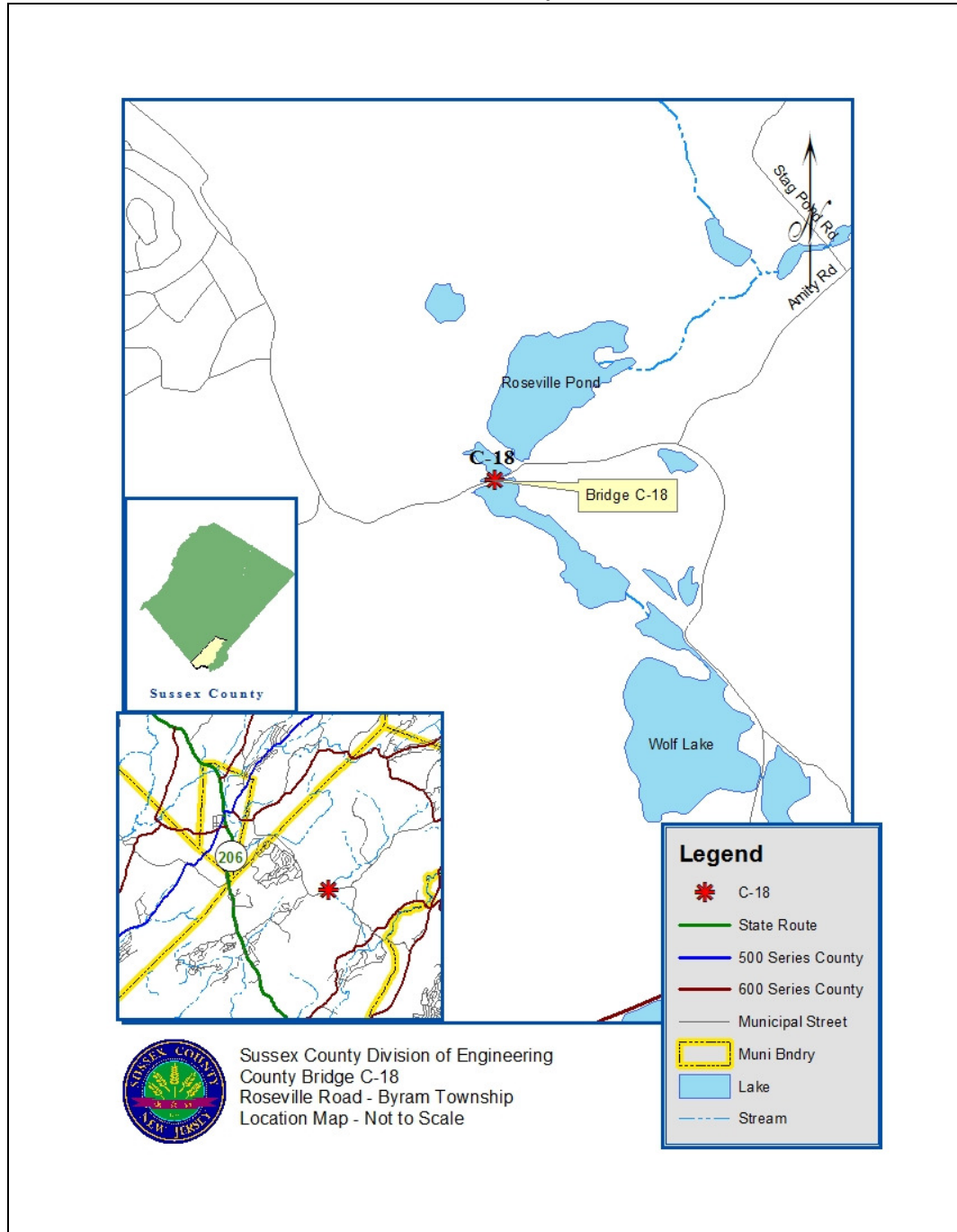


DEPARTMENT OF ENGINEERING AND PLANNING
 Division of Engineering
 One Spring Street
 Newton, New Jersey 07860
 973-579-0430
dpw@sussex.nj.us
 Matthew R. Sinke, P.E.
 Division Director/Assistant County Engineer

Design Notice – Bridge C-18 Rehabilitation

Distributed: April 9, 2019

Location Map



Sussex County Division of Engineering
 County Bridge C-18
 Roseville Road - Byram Township
 Location Map - Not to Scale