



DEPARTMENT OF ENGINEERING AND PLANNING  
 Division of Engineering  
 One Spring Street  
 Newton, New Jersey 07860  
 973-579-0430  
[dpw@sussex.nj.us](mailto:dpw@sussex.nj.us)  
 Matthew R. Sinke, P.E.  
 Division Director/Assistant County Engineer

**Project Update Notice – Bridge D-21 Construction** **Distributed: Nov. 21, 2018**

**Project:**

**Bridge D-21 Superstructure Replacement**

Armstrong Road (Dead End Section), Frankford Township

**Construction Forces:**

- Sussex County Office of Bridge & Traffic Safety
- Sussex County Division of Public Works

**Schedule:**

Anticipated Schedule is as Follows:

- Bridge/Road Closed – November 12, 2018
- Bridge/Road Re-opened – November 21, 2018
- Pavement of Bridge approaches – on or about November 26, 2018
- The bridge substructure (concrete) repair work is anticipated to be completed in the spring/summer of 2019 when weather and site conditions permit

**Armstrong Road Closure & Traffic Impacts:**

- Armstrong Road has been re-opened at Bridge D-21 following the removal of the existing bridge deck and installation of a new timber superstructure.

**Construction Activities:**

- ✓ Install Soil Erosion & Sediment Control Measures - *Complete*
- ✓ Install Temporary Pedestrian Bridge - *Complete*
- ✓ Close Armstrong Road and Remove existing Bridge - *Complete*
- ✓ Install New Timber Bridge Superstructure - *Complete*
- ✓ Remove Load Posting & Open Roadway to Traffic
  - Road Resurfacing and Site Restoration
  - Guide Rail Installation
  - Repair Existing Wingwalls and Abutments
  - Remove Temporary Pedestrian Bridge

**Contact Information:**

For more information about this project please feel free to contact Josh Roe, Engineer Trainee, of the Sussex County Division of Engineering at 973-579-0430 or [dpw@sussex.nj.us](mailto:dpw@sussex.nj.us)



Bridge D-21: View of Existing Bridge Demolition and Pedestrian Bridge Looking East



Bridge D-21: New Timber Superstructure Construction

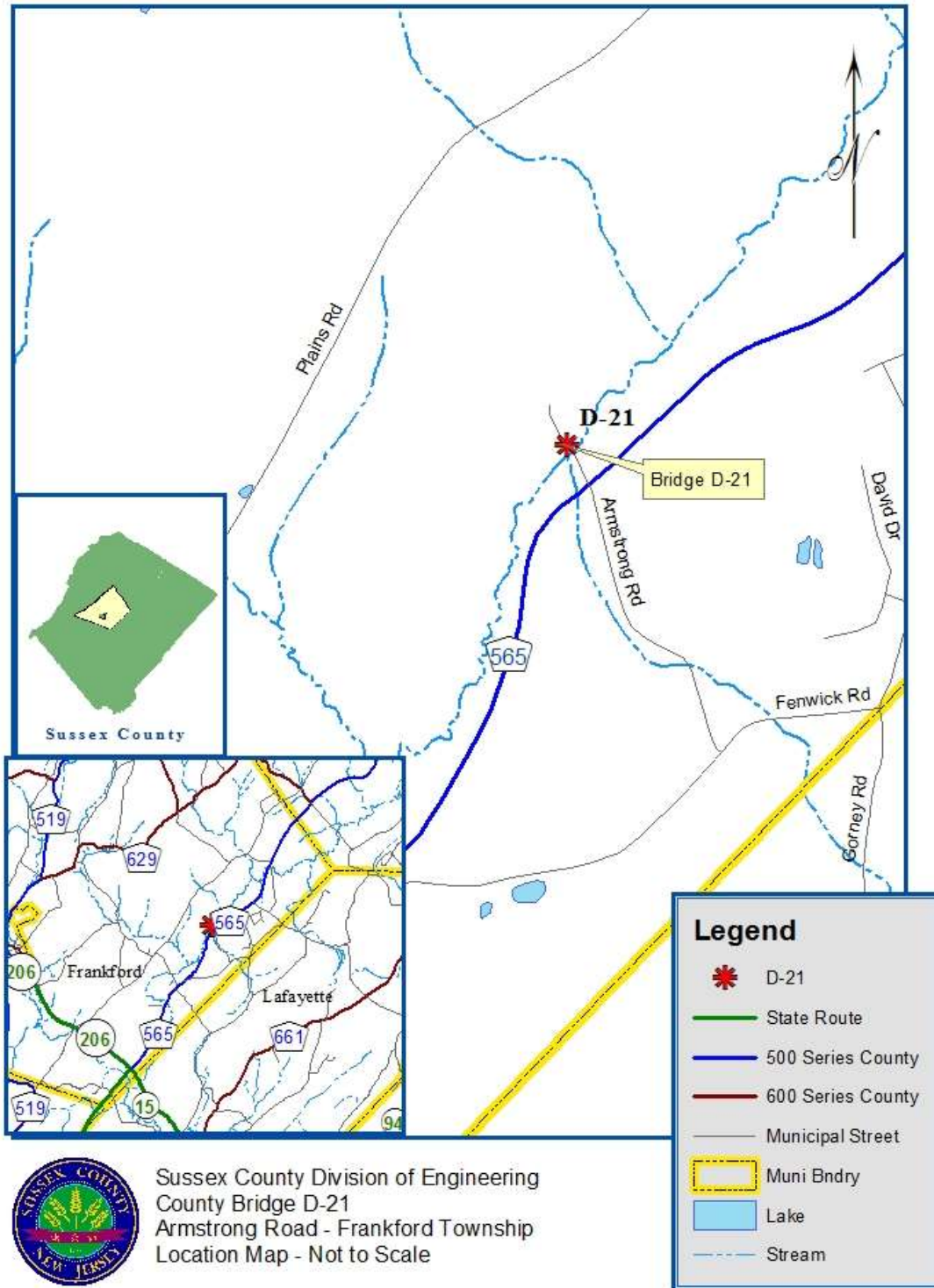


Bridge D-21: View of New Bridge Superstructure Looking East (Roadway Re-Opened)



DEPARTMENT OF ENGINEERING AND PLANNING  
 Division of Engineering  
 One Spring Street  
 Newton, New Jersey 07860  
 973-579-0430  
[dpw@sussex.nj.us](mailto:dpw@sussex.nj.us)  
 Matthew R. Sinke, P.E.  
 Division Director/Assistant County Engineer

**Project Update Notice – Bridge D-21 Construction** **Distributed: Nov. 21, 2018**



Sussex County Division of Engineering  
 County Bridge D-21  
 Armstrong Road - Frankford Township  
 Location Map - Not to Scale