



DEPARTMENT OF ENGINEERING AND PLANNING
 Division of Engineering
 One Spring Street
 Newton, New Jersey 07860
 973-579-0430
dpw@sussex.nj.us
 Matthew R. Sinke, P.E.
 Division Director/Assistant County Engineer

Project Update Notice – Bridge D-21 Construction **Distributed: Nov. 8, 2018**

Project:

Bridge D-21 Superstructure Replacement
 Armstrong Road (Dead End Section), Frankford Township

Construction Forces:

- Sussex County Office of Bridge & Traffic Safety
- Sussex County Division of Public Works

Schedule:

Anticipated Schedule is as Follows:

- Installation of Temporary Pedestrian Access Bridge – Complete
- Bridge/ Road Closure – November 12, 2018
- Road Closure Duration – approximately 4± weeks

Armstrong Road Closure & Traffic Impacts:

- Armstrong Road will be closed at Bridge D-21 for removal of the existing bridge and installation of a new timber superstructure.
- A temporary pedestrian bridge was installed to provide homeowner / emergency access across the Papakating Creek for the duration of the closure.

Construction Activities:

- ✓ Install Soil Erosion & Sediment Control Measures - *Complete*
- ✓ Install Temporary Pedestrian Bridge – *Complete*
- Close Armstrong Road and Remove existing Bridge – November 12, 2018
 - Repair Existing Wingwalls and Abutments
 - Install New Timber Bridge Superstructure
 - Remove Load Posting & Open Roadway to Traffic
 - Remove Temporary Pedestrian Bridge
 - Guide Rail Installation
 - Road Resurfacing and Site Restoration

Contact Information:

For more information about this project please feel free to contact Josh Roe, Engineer Trainee, of the Sussex County Division of Engineering at 973-579-0430 or dpw@sussex.nj.us



Bridge D-21: View of Existing Bridge and Pedestrian Bridge Looking West



Bridge D-21: View of Existing Bridge from Downstream (prior to construction)

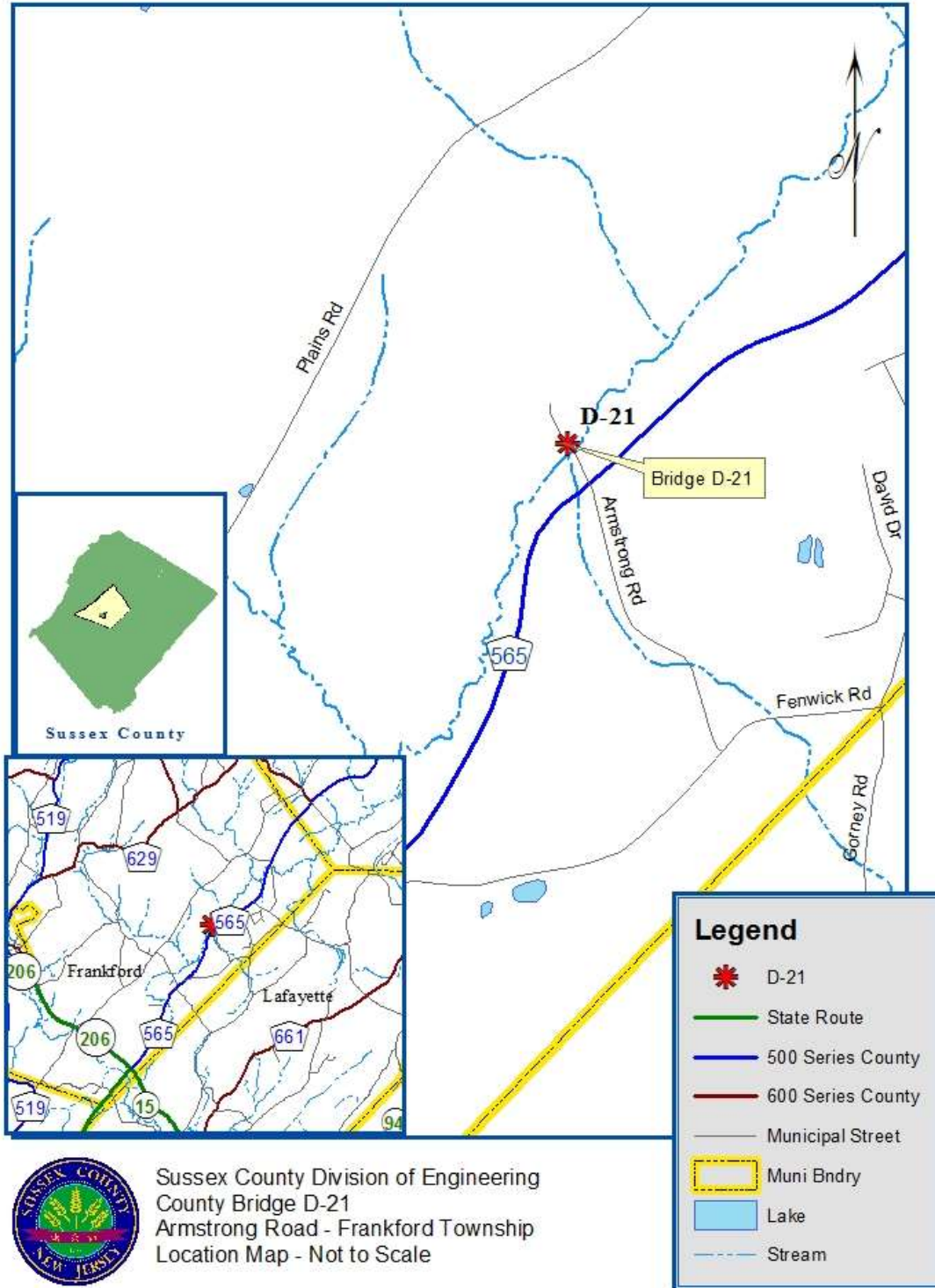


Bridge D-21: View of Existing Bridge Looking East (prior to pedestrian bridge installation)



DEPARTMENT OF ENGINEERING AND PLANNING
 Division of Engineering
 One Spring Street
 Newton, New Jersey 07860
 973-579-0430
dpw@sussex.nj.us
 Matthew R. Sinke, P.E.
 Division Director/Assistant County Engineer

Project Update Notice – Bridge D-21 Construction **Distributed: Nov. 8, 2018**



Sussex County Division of Engineering
 County Bridge D-21
 Armstrong Road - Frankford Township
 Location Map - Not to Scale