



DEPARTMENT OF ENGINEERING AND PLANNING
 Division of Engineering
 One Spring Street
 Newton, New Jersey 07860
 973-579-0430
dpw@sussex.nj.us
 Matthew R. Sinke, P.E.
 Division Director/Assistant County Engineer

Project Status – Bridge X-09 CR 565

Distributed: October 5, 2018

Project:

Reconstruction & Realignment of Bridge X-09

Carrying County Route 565 over the Papakating Creek, Wantage Township

Designer: Cherry, Weber & Associates, Freehold, NJ

Contractor: Awarded to Sparwick Contracting, Inc., Lafayette, NJ for \$3,599,825.00

Preliminary Construction Schedule:

Contract Award: December 13, 2017

Daily Lane Closure for Utility Relocations: *Complete*

Road Closed for Construction: *June 26, 2018*

Construction Complete/Road Open: December 2018

Construction Funding:

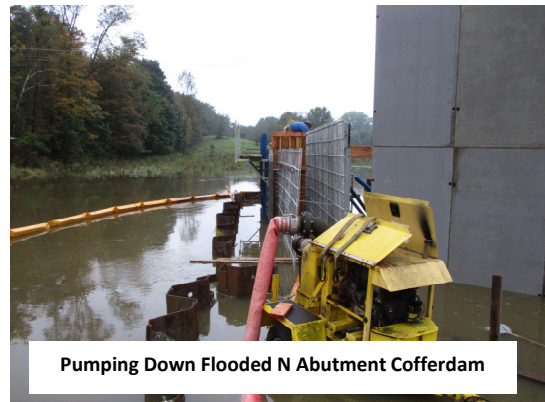
NJDOT 2015 LBFNP (TTF)	\$1,000,000.00
NJDOT 2016 LBFNP (TTF)	\$ 500,000.00
NJDOT 2017 LBFNP (TTF)	\$1,000,000.00
NJDOT 2018 LBFNP (TTF)	\$ 900,000.00 (<i>appv'd</i>)
<u>2016/2017 County Capital</u>	<u>\$ 199,825.00</u>
TOTAL	\$3,599,825.00

Construction Activities:

- ✓ Implement Road Closure/Detour – *Complete*
- ✓ Install Soil Erosion & Sediment Control Measures – *Complete*
- Demolish Existing Structure – *In Progress*
- Install Sheeting – *In Progress*
- Construct Bridge Footings/Abutments/Wingwalls – *In Progress*
- Install Bearings/Erect Beams
- Construct Bridge Deck
- Construct Bridge Parapet & Rail
- Construct Retaining Walls – *In Progress*
- Construct Approach Roadway
- Install Pavement and Striping
- Install Guiderail
- Landscaping & Incidental Items of Work
- Reopen Roadway



S Abutment Steel Plate Sheeting Installation



Pumping Down Flooded N Abutment Cofferdam



NW Retaining Wall #1 Installation

For more information about this project please contact Susan Delmar, P.E., at the Sussex County Division of Engineering at 973-579-0430 or dpw@sussex.nj.us

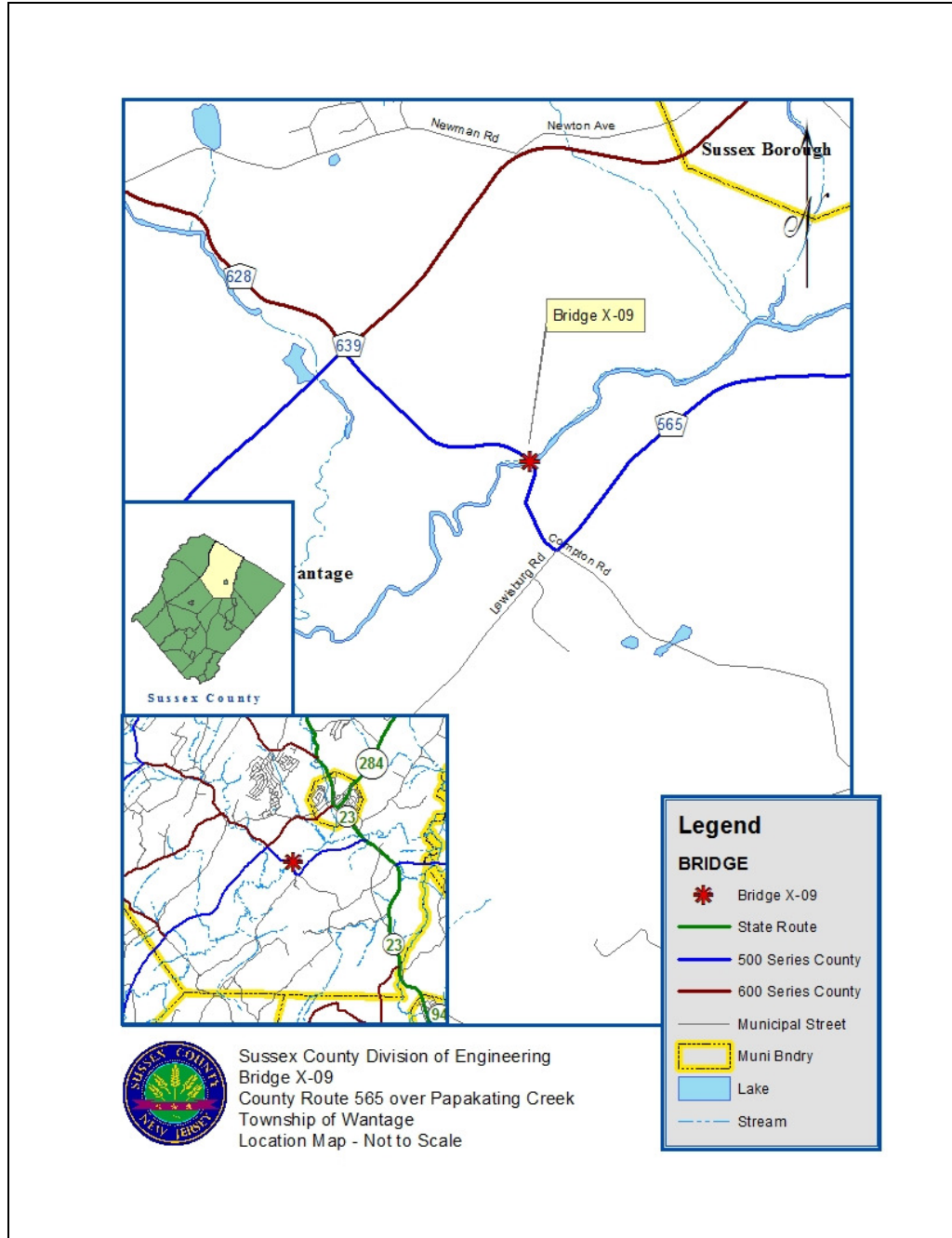


DEPARTMENT OF ENGINEERING AND PLANNING
 Division of Engineering
 One Spring Street
 Newton, New Jersey 07860
 973-579-0430
dpw@sussex.nj.us
 Matthew R. Sinke, P.E.
 Division Director/Assistant County Engineer

Project Status – Bridge X-09 CR 565

Distributed: October 5, 2018

LOCATION MAP



Sussex County Division of Engineering
 Bridge X-09
 County Route 565 over Papakating Creek
 Township of Wantage
 Location Map - Not to Scale



DEPARTMENT OF ENGINEERING AND PLANNING
 Division of Engineering
 One Spring Street
 Newton, New Jersey 07860
 973-579-0430
dpw@sussex.nj.us
 Matthew R. Sinke, P.E.
 Division Director/Assistant County Engineer

Project Status – Bridge X-09 CR 565

Distributed: October 5, 2018

DETOUR MAP

