



DEPARTMENT OF ENGINEERING AND PLANNING
Division of Engineering
One Spring Street
Newton, New Jersey 07860
973-579-0430
dpw@sussex.nj.us
Matthew R. Sinke, P.E.
Division Director/Assistant County Engineer

Advanced Construction Notice – CR 620 & Walnut Rd Wall Distributed: Aug. 27, 2018

Project:

Replacement of Retaining Wall at CR 620 & Walnut Road Intersection

CR 620 (Glen Road), Sparta Township

Construction Forces:

- Sussex County Division of Public Works

Advisory:

The existing stone masonry retaining wall at the intersection of CR 620 and Walnut Road is exhibiting severe deterioration with numerous stones missing from the wall.

The stone masonry wall is to be replaced with a new modular block retaining wall.

Anticipated Schedule:

Anticipated Schedule is as follows:

- Construction Start – **On or about September 4, 2018**
- Construction Duration – 1 Month
- Tentative schedule is subject to change based on weather conditions and unforeseen circumstances.

CR 620 Traffic Impacts:

- Single lane, flagger controlled work zones will be used along CR 620 (Glen Road) during construction, as required during work hours, to facilitate construction of the retaining wall.
- The eastbound shoulder of CR 620 will be closed during non-working hours.
- Walnut Road will be closed to traffic at CR 620 for the duration of construction.

Contact Information:

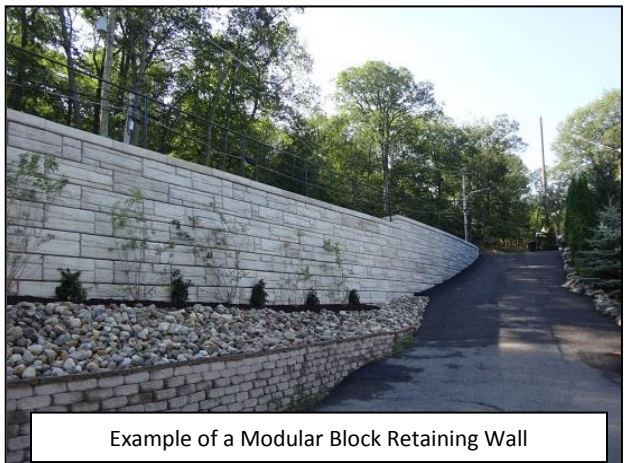
For more information about this project please feel free to contact Josh Roe, Engineer Trainee, of the Sussex County Division of Engineering at 973-579-0430 or dpw@sussex.nj.us



CR 620 Wall: View of Wall Looking South



CR 620 Wall: View of Wall Looking Southwest



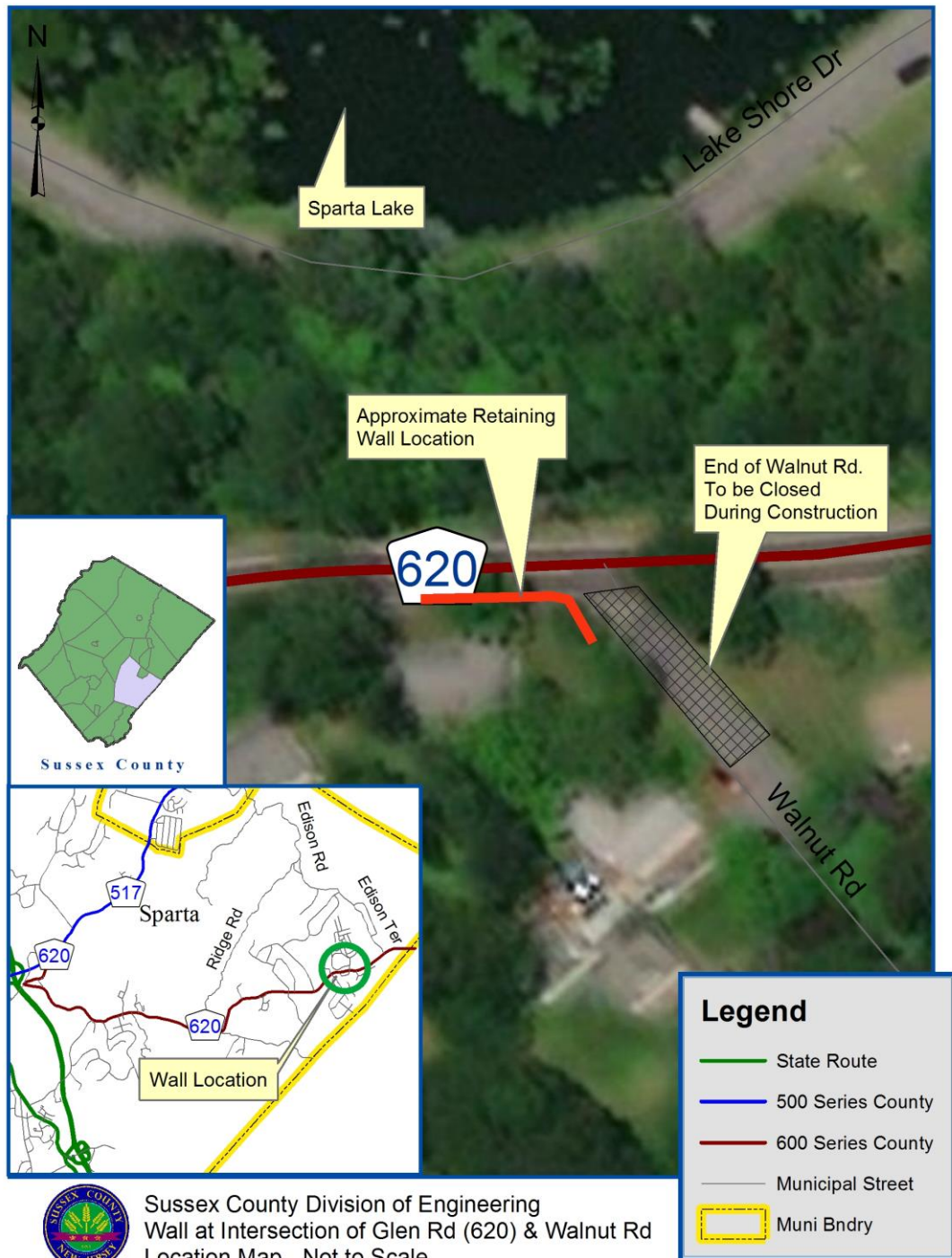
Example of a Modular Block Retaining Wall



DEPARTMENT OF ENGINEERING AND PLANNING
 Division of Engineering
 One Spring Street
 Newton, New Jersey 07860
 973-579-0430
dpw@sussex.nj.us
 Matthew R. Sinke, P.E.
 Division Director/Assistant County Engineer

Advanced Construction Notice – CR 620 & Walnut Rd Wall Distributed: Aug. 27, 2018

CR 620 & Walnut Road Retaining Wall: Location Map



Sussex County Division of Engineering
 Wall at Intersection of Glen Rd (620) & Walnut Rd
 Location Map - Not to Scale