



DEPARTMENT OF ENGINEERING AND PLANNING
Division of Engineering
One Spring Street
Newton, New Jersey 07860
973-579-0430
dpw@sussex.nj.us
Matthew R. Sinke, P.E.
Division Director/Assistant County Engineer

Construction Notice – Bridge Q-18 Repairs

Distributed: April 24, 2018

Project:

Bridge Q-18 Repairs

CR 669 (Limecrest Road), Sparta Township

Advisory:

The existing upstream concrete headwall exhibits spalling along the length of the headwall compromising the long term safety of the bridge railing system.

Repairs to the existing upstream headwall are required to repair the bridge railing system and safeguard the traveling public.

Anticipated Schedule:

Anticipated Schedule is as follows:

- Construction Start – **April 9, 2018**
- Construction Duration – 2-3 Weeks

CR 669 Closure & Traffic Impacts:

- Daily closures of CR 669 (Limecrest Road) at Bridge Q-18 may be required for repair of the headwall from the hours of 9:00 AM to 2:00 PM. Proposed detour map is below.
- Detour signage will be posted and maintained for the daily closures on breakaway barricades.
- Single lane flagger controlled work zones will be used during construction, as required, to facilitate construction of the headwall repairs.

Construction Activities:

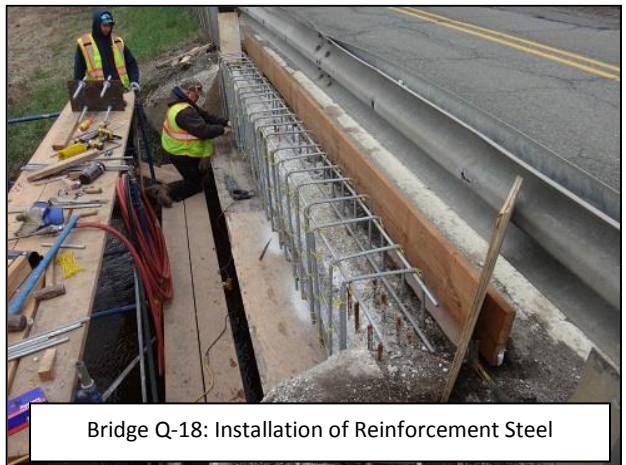
- ✓ Installation of Traffic Control Devices, as required - **Complete**
- ✓ Select Removal of Existing Upstream Headwall - **Complete**
- **Repair Concrete Headwall – In Progress**
 - Final Paving, as Required
 - Guide Rail Installation
 - Removal of Traffic Control Devices, as required

Contact Information:

For more information about this project please feel free to contact Siân Pearson, P.E., Principal Engineer, of the Sussex County Division of Engineering at 973-579-0430 or dpw@sussex.nj.us



Bridge Q-18: Select Removal of Concrete Complete



Bridge Q-18: Installation of Reinforcement Steel



Bridge Q-18: Headwall Forms Installed



DEPARTMENT OF ENGINEERING AND PLANNING
 Division of Engineering
 One Spring Street
 Newton, New Jersey 07860
 973-579-0430
dpw@sussex.nj.us
 Matthew R. Sinke, P.E.
 Division Director/Assistant County Engineer

Construction Notice – Bridge Q-18 Repairs **Distributed: April 24, 2018**

Bridge Q-18 CR 669 (Limecrest Road): Detour Map

