



DEPARTMENT OF ENGINEERING AND PLANNING
 One Spring Street
 Newton, New Jersey 07860
 973-579-0430
dpw@sussex.nj.us
 Matthew Sinke, P.E.
 Division Director/Assistant County Engineer

Construction Notice – Hopatcong Street Wall Repairs Distributed: November 3, 2017

Project:

Hopatcong Street Wall Repairs

Intersection of CR-609 (Lakeside Avenue) and Hopatcong Street, Hopatcong Borough

Construction Forces:

- Sussex County Office of Bridge & Traffic Safety
- Sussex County Division of Public Works

Schedule:

Anticipated Schedule is as Follows:

- Construction Start – on or about November 6, 2017
- Construction Duration – Approximately 4 Weeks

Hopatcong Street Ramp Closure:

The north leg (Jefferson side) of the Hopatcong Street Ramp from CR-609 (Lakeside Avenue) will remain fully closed to traffic for the duration of the repair work. All access to Hopatcong Street from CR-609 (Lakeside Avenue) will need to be made from the south leg (Hopatcong Borough side) of the Hopatcong Street Ramp for the duration of construction.

Construction Activities:

- Closure of North Ramp
- Remove Existing Damaged Guide Rail
- Remove Damaged Portion of Masonry Retaining Wall
- Reconstruct Damaged Portion of Masonry Retaining Wall
- Install New Guide Rail
- Reopen North Ramp to Traffic

Contact Information:

For more information about this project please feel free to contact Matt Sinke, P.E., Assistant County Engineer, of the Sussex County Division of Engineering at 973-579-0430 or dpw@sussex.nj.us



CR-609 & Hopatcong Street Damaged Retaining Wall



Hopatcong Street (North Leg) to Remain Closed During Construction



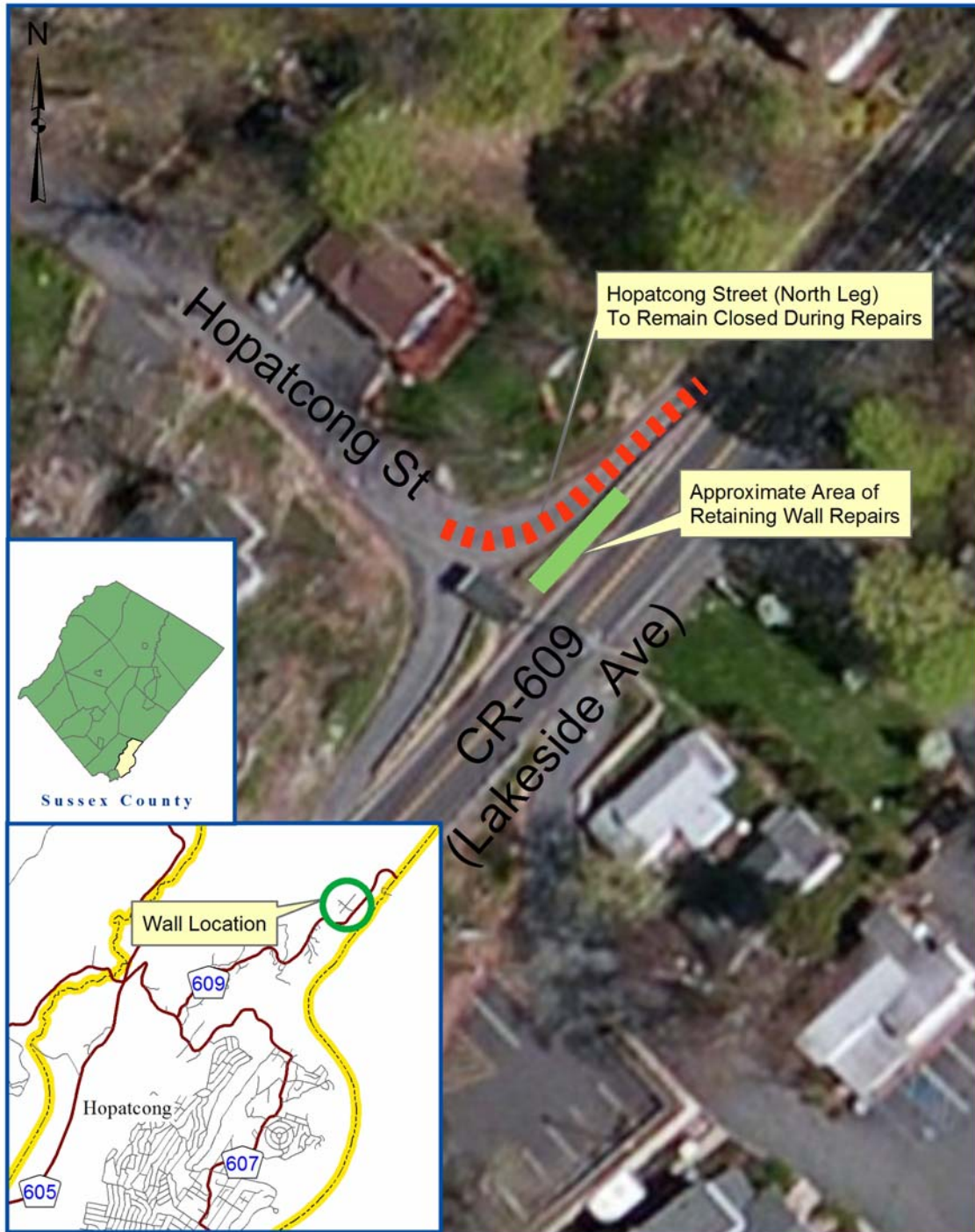
Hopatcong Street (North Leg) Looking toward Damaged Portion of Retaining Wall

N:\04 Asset\01 Road\609\A_A\Projects\Northwood Wall\Public Notices\20171031 PBL NTC 609 (Hopatcong Street Wall).doc



DEPARTMENT OF ENGINEERING AND PLANNING
 One Spring Street
 Newton, New Jersey 07860
 973-579-0430
dpw@sussex.nj.us
 Matthew Sinke, P.E.
 Division Director/Assistant County Engineer

Construction Notice – Hopatcong Street Wall Repairs Distributed: November 3, 2017



Sussex County Division of Engineering
 Hopatcong Street Retaining Wall Repairs
 Location Map - Not to Scale