



DEPARTMENT OF ENGINEERING AND PLANNING
Division of Engineering
One Spring Street
Newton, New Jersey 07860
973-579-0430
dpw@sussex.nj.us
William J. Koppenaar, P.E.
Division Director/Assistant County Engineer

Project Completion Notice – Bridge G-11

Distributed: October 23, 2015

Project:

Repair of Bridge G-11

Intersection of CR 519 (a.k.a. Ridge Road) and CR 608 (a.k.a. Shotwell Road), Green Twp.

Construction Forces:

- Sussex County Office of Bridge & Traffic Safety
- Sussex County Division of Public Works

Schedule:

- Construction Start: September 22, 2015
- **Construction Completion: October 23, 2015**

Traffic Control:

- As of Friday, October 23, 2015 all permanent traffic safety devices (a.k.a. guide rail) have been installed.
- Remaining temporary traffic control devices (a.k.a. signs, cones, barrels, etc.) will be removed over the next few days as staffing availability permits.

Construction Activities:

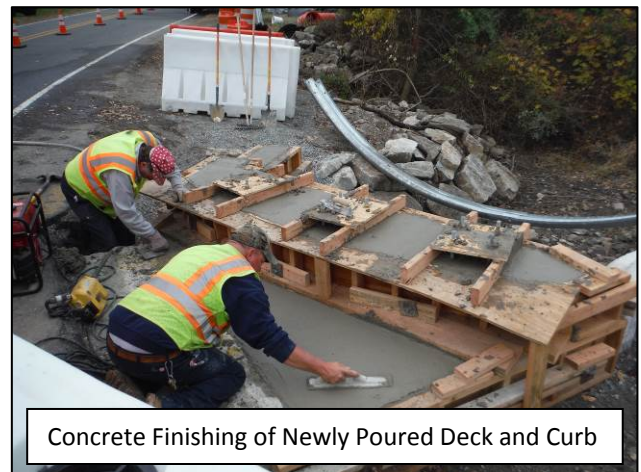
- ✓ Install roadway construction signage - *Complete*
- ✓ Remove damaged guide rail and existing concrete headwall - *Complete*
- ✓ Extend concrete bridge deck on existing wingwalls to improve roadway geometry - *Complete*
- ✓ Pour new concrete headwall - *Complete*
- ✓ Stabilize existing roadway embankment - *Complete*
- ✓ Repave bridge deck and roadway shoulder as necessary - *Complete*
- ✓ Install / upgrade beam guide rail - *Complete*
- **Remove traffic control devices and construction signage – *In Progress***

Contact Information:

For more information about this project please feel free to contact Matt Sinke, Principal Engineer, of the Sussex County Division of Engineering at 973-579-0430 or dpw@sussex.nj.us



Demolition of Existing Damaged Bridge Headwall



Concrete Finishing of Newly Poured Deck and Curb



Installation of Beam Guide Rail along CR-519



DEPARTMENT OF ENGINEERING AND PLANNING
 Division of Engineering
 One Spring Street
 Newton, New Jersey 07860
 973-579-0430
 dpw@sussex.nj.us
 William J. Koppenaar, P.E.
 Division Director/Assistant County Engineer

Project Completion Notice – Bridge G-11

Distributed: October 23, 2015

Bridge G-11, CR-519 / CR-608: Location Map

