



DEPARTMENT OF ENGINEERING AND PLANNING
 Division of Engineering
 One Spring Street
 Newton, New Jersey 07860
 973-579-0430
dpw@sussex.nj.us
 John C. Risko, P.E., P.L.S., P.P.
 Division Director/Assistant County Engineer

Completion Notice – Repair of Bridge V-07 - Phase 1 Distributed: October 21, 2014

Project:

Repair of Bridge V-07 – Phase 1

CR 517 (McAfee Glenwood Road), Vernon Township

Construction Forces:

- Sussex County Office of Bridge & Traffic Safety
- Sussex County Division of Public Works

Schedule:

- Phase 1 Work:
 - Start Date: September 23, 2014
 - **Completion Date: October 20, 2014**
- Phase 2 Work:
 - Anticipate Phase 2 Work being completed during the 2015 Construction Season (Spring / Summer)

Traffic Control (Phase 1):

- As of October 20, 2014 all traffic control devices (signs) have been removed along CR-517 (McAfee Glenwood Road)

Construction Activities (Phase 1):

- ✓ Install Roadway Construction Signage - *Complete*
- ✓ Install Stream Diversion and Sediment Control Measures - *Complete*
- ✓ Form and Pour Concrete Underpinning for Undermined Invert Slab and Concrete Crib Wall - *Complete*
- ✓ Install Large Rock Armoring to prevent future erosion / scour - *Complete*
- ✓ Remove existing stream diversion and restore site to existing condition - *Complete*

Construction Activities (Phase 2):

- Perform additional Superstructure, Roadway Shoulder, and Guide Rail Repairs / Upgrades

Contact Information:

For more information about this project please feel free to contact Matt Sinke, Principal Engineer, of the Sussex County Division of Engineering at 973-579-0430 or

dpw@sussex.nj.us

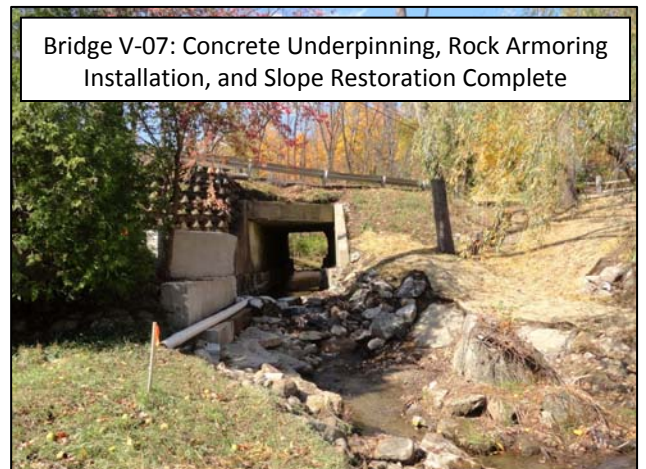
Division of Engineering



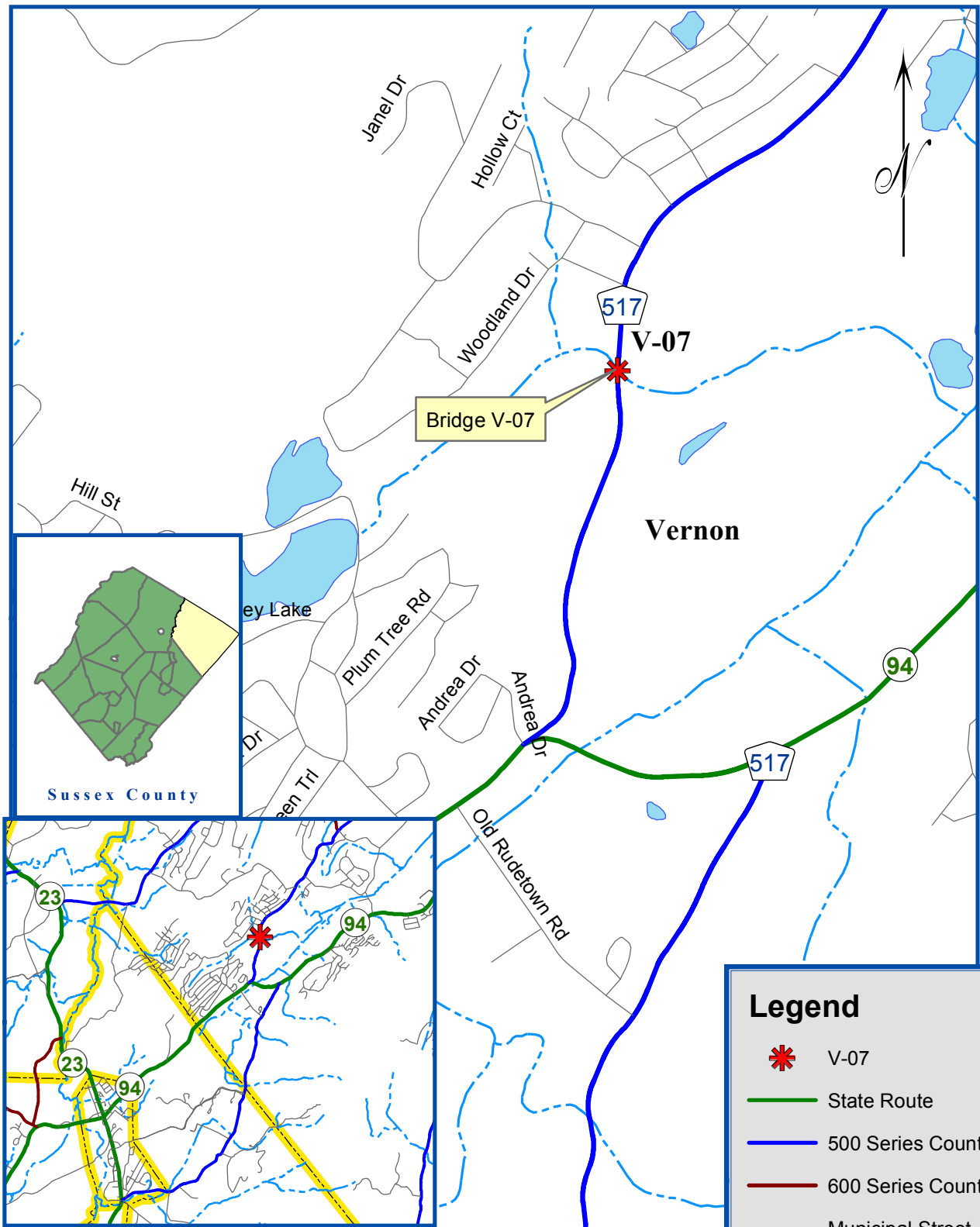
Bridge V-07: Stream Diversion, Formwork, and First Step of Concrete Underpinning in Place



Bridge V-07: Installation of Geotextile Fabric and Rock Armoring at Downstream End



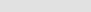
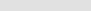
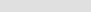


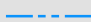


Bridge V-07: Concrete Underpinning, Rock Armoring Installation, and Slope Restoration Complete



Sussex County Division of Engineering
 County Bridge V-07
 McAfee - Glenwood Road (CR-517)
 Location Map - Not to Scale

Legend

-  V-07
-  State Route
-  500 Series County
-  600 Series County
-  Municipal Street
-  Muni Bndry
-  Lake
-  Stream