



DEPARTMENT OF ENGINEERING AND PLANNING  
Division of Engineering  
One Spring Street  
Newton, New Jersey 07860  
973-579-0430  
[dpw@sussex.nj.us](mailto:dpw@sussex.nj.us)  
John C. Risko, P.E., P.L.S., P.P.  
Division Director/Assistant County Engineer

## **Public Notice: Emergency Closure - CR-521 (River Road)**

**Distributed: July 23, 2013**

### **County Road 521 (River Road) in Montague: CLOSED**

On Monday, July 8, 2013, CR-521 (River Road) was closed approximately 1000' north of New Mashipacong Rd. due to a large unanticipated roadway settlement.

### **Project:**

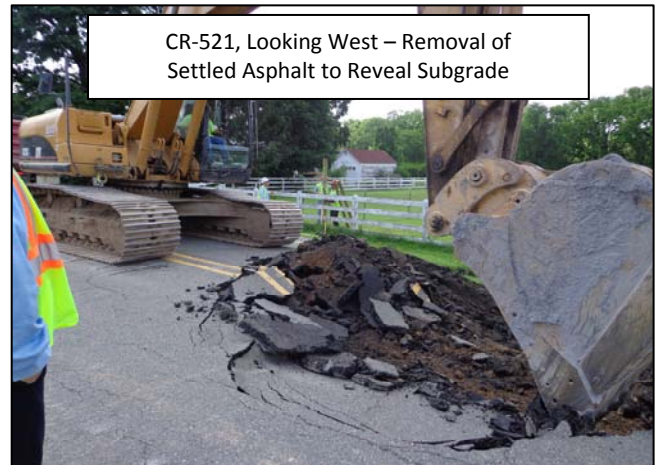
During drilling operations to install a new Tennessee Gas Co. line under CR-521 (aka River Road) in Montague, the Drilling Contractor, Michels Corp., noticed a progressive settlement developing in the paved road. The Contractor promptly suspended their operations and notified the County of Sussex Division of Public Works who, in the interest of public safety, quickly closed the road to traffic.

### **Schedule:**

- ✓ July 8: County established a full roadway closure and posted a temporary detour (see attached detour map).
- ✓ July 8: Michels Corp. subsequently filled the drilled hole with concrete to minimize possible further settlement.
- ✓ July 11: County met with Tennessee Gas's engineer, JMT Inc. on-site to identify causal issues, establish remedial action items, and develop a work schedule.
- ✓ Week of July 15: JMT Inc. developed proposed plans and specifications for the remedial construction which were approved by the County on Friday, July 19<sup>th</sup>.
- **Week of July 22: Michels Corp. has engaged Salmon Brothers to begin reconstruction of CR-521 roadway embankment & pavement by Friday, July 26<sup>th</sup>.**
  - Week of July 29: Upon completion of roadway reconstruction and re-striping, CR-521 to be re-opened to traffic on or before August 2<sup>nd</sup>.
  - Early Fall 2013: After monitoring for interim corrective action(s) associated with any further settlement, Michels will then advance roadway subsoil re-densification program using single lane traffic controls.
  - Late Fall 2013: With the completion of roadway restabilization efforts, the affected area of CR-521 will be milled, re-paved and re-striped.

### **Contact Information:**

For more information about this project please feel free to contact the Sussex County Division of Engineering at 973-579-0430 or [dpw@sussex.nj.us](mailto:dpw@sussex.nj.us)

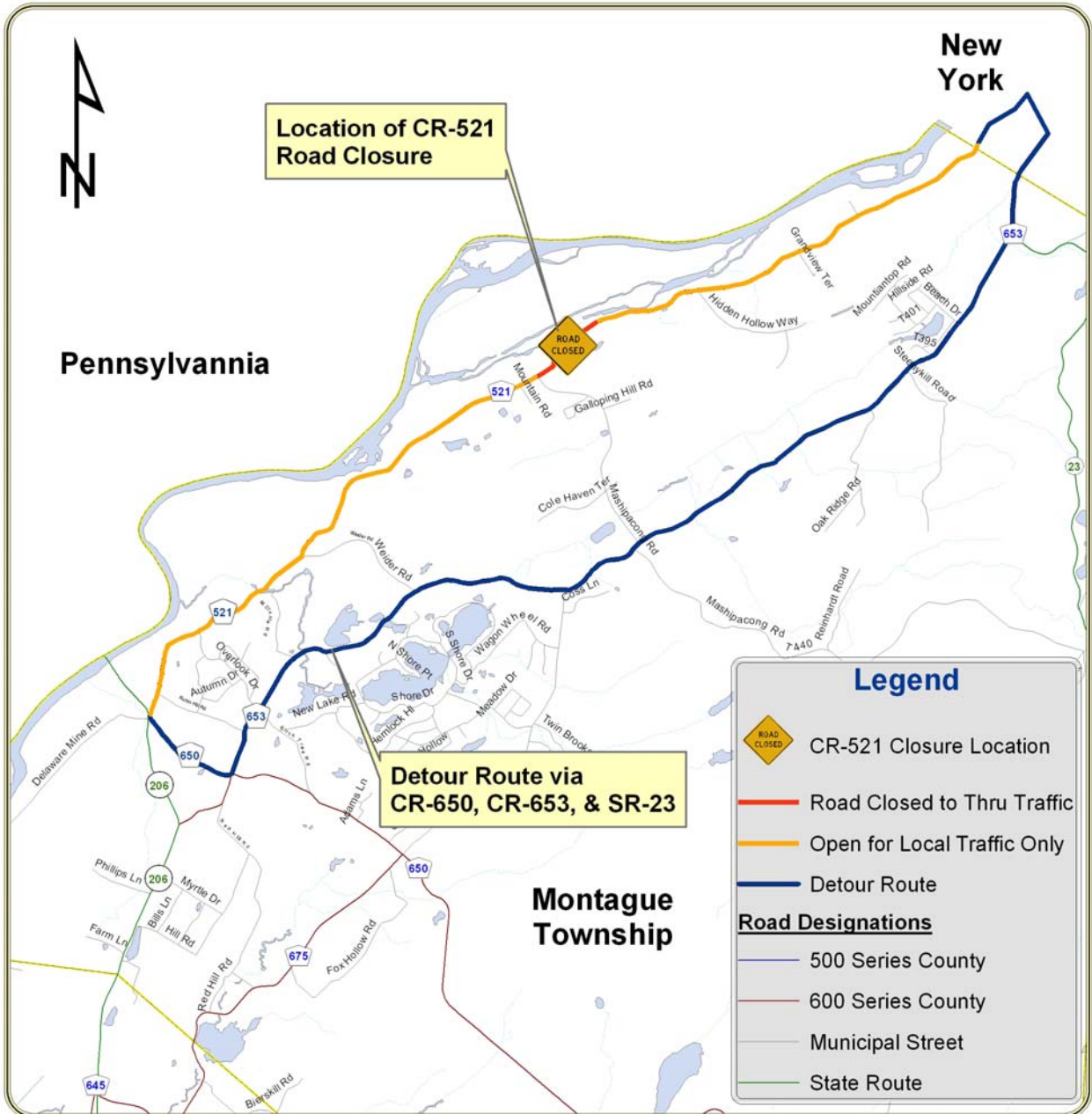




DEPARTMENT OF ENGINEERING AND PLANNING  
 Division of Engineering  
 One Spring Street  
 Newton, New Jersey 07860  
 973-579-0430  
[dpw@sussex.nj.us](mailto:dpw@sussex.nj.us)  
 John C. Risko, P.E., P.L.S., P.P.  
 Division Director/Assistant County Engineer

**Public Notice: Emergency Closure - CR-521 (River Road) Distributed: July 23, 2013**

**County Route 521 Closure: Detour Map:**



X:\Roads\521\A\_A\Projects\521 Tennessee Gas 2013\Public Notices\NTC\_20130723\_CR\_521\_Closure Update Notice - R3 - Final.doc