



DEPARTMENT OF ENGINEERING AND PLANNING
Division of Engineering
One Spring Street
Newton, New Jersey 07860
973-579-0430
dpw@sussex.nj.us
John C. Risko, P.E., P.L.S., P.P.
Division Director/Assistant County Engineer

Project Status – Bridge E-07 (Franklin Viaduct) Distributed: October 19, 2013

Project:

Replacement of Sussex County Bridge E-07 Carrying County Route 631 (North Church Road) over Wallkill River and New York Susquehanna & Western Railroad

Designer: Cherry, Weber and Associates

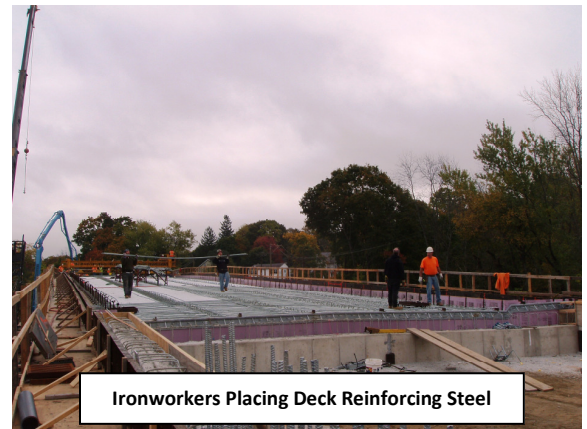
Contractor: Awarded to Ritacco Construction, Inc., of Belleville, NJ for \$8,174,000.00

Schedule:

Complete deck steel placement and bridge deck pours. Place embankment fill. Complete site drainage. Construct bridge curb, sidewalk and rail. Street lighting installation. Paving. Construction Completion Date: December 31, 2013

Construction Activities:

- ✓ Implement road closure and detour
- ✓ Demolition of bridge superstructure and ramp
- ✓ Demolition of substructure, abutments and footings
- ✓ Installation of sheeting
- ✓ Installation of piles
- ✓ Placement of reinforced concrete footings, abutments, wing walls and bridge piers
- ✓ Installation of deck beams
- **Construction of reinforced concrete deck (65% complete)**
- Construction of reinforced concrete bridge sidewalk and parapets **(5% complete)**
- Installation of bridge railing and lighting
- **Placement of backfill and drainage structures (90% complete)**
- Construction of reinforced concrete approach slabs
- Roadway paving and striping
- Installation of beam guide rail
- Topsoil, seed and landscaping



Ironworkers Placing Deck Reinforcing Steel



Placing & Vibrating Deck Concrete

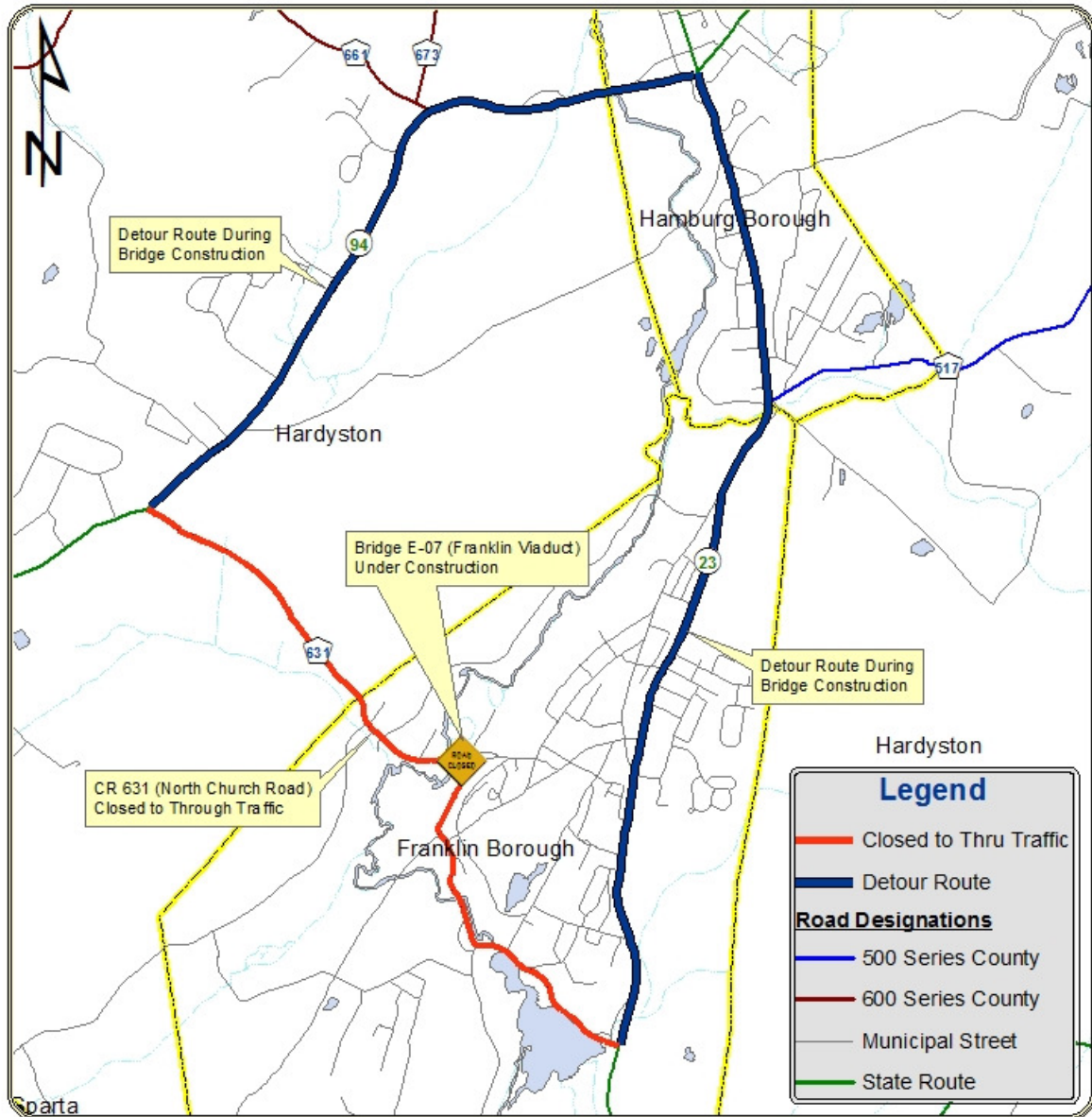
For more information about this project please feel free to contact Charles Porter, P.E., at the Sussex County Division of Engineering at 973-579-0430 or dpw@sussex.nj.us

Future updates of the project schedule will be provided as dates and durations are confirmed.



DEPARTMENT OF ENGINEERING AND PLANNING
Division of Engineering
One Spring Street
Newton, New Jersey 07860
973-579-0430
dpw@sussex.nj.us
John C. Risko, P.E., P.L.S., P.P.
Division Director/Assistant County Engineer

Project Status – Bridge E-07 (Franklin Viaduct) Distributed: October 19, 2013



PROJECT DETOUR MAP