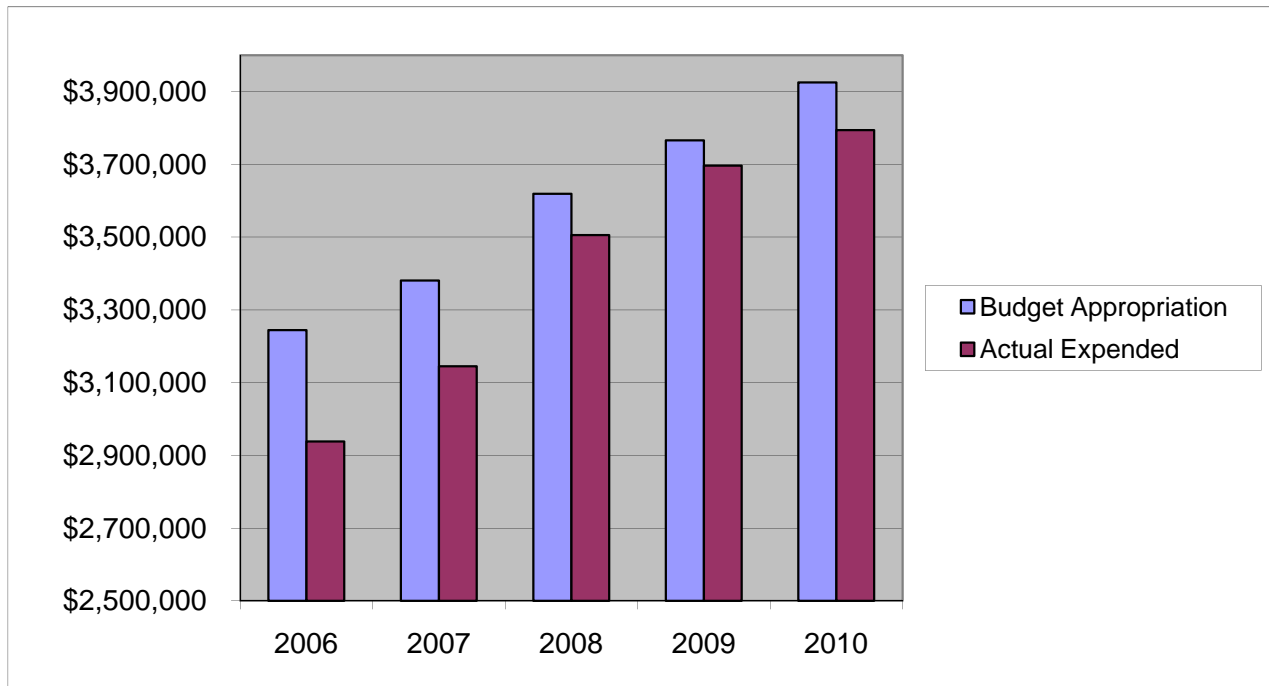


## ***PROSECUTOR'S OFFICE***

### ***Salaries & Wages***

	2006	2007	2008	2009	2010
Budget Appropriation	\$ 3,244,186.00	\$ 3,380,651.00	\$ 3,619,336.00	\$ 3,766,250.00	\$ 3,925,039.00
Actual Expended	\$ 2,937,978.11	\$ 3,145,075.29	\$ 3,505,769.62	\$ 3,696,500.00	\$ 3,794,020.77
Difference (App. - Exp.)	\$ 306,207.89	\$ 235,575.71	\$ 113,566.38	\$ 69,750.00	\$ 131,018.23
% Expended	90.6%	93.0%	96.9%	98.1%	96.7%
Total Budget Approp.	\$ 98,126,692	\$ 102,912,559	\$ 107,848,203	\$ 107,667,916	\$ 108,900,890
% of Total Budget Approp.	3.31%	3.28%	3.36%	3.50%	3.60%
Five Year Average (Mean) Budget Appropriation:					\$ 3,587,092.40
Five Year Average (Mean) Budget Expended:					\$ 3,415,868.76
Difference:					\$ 171,223.64



<b>2011 BUDGET APPROPRIATION:</b>	<b>\$ 3,901,602</b>
2010 Budget Appropriation	\$ 3,925,039
\$ Change	\$ (23,437)
% Change:	-0.6%

2011 Budget Appropriation	\$ 3,901,602
2006 Budget Appropriation	\$ 3,244,186
\$ Change	\$ 657,416
% Change	20.3%