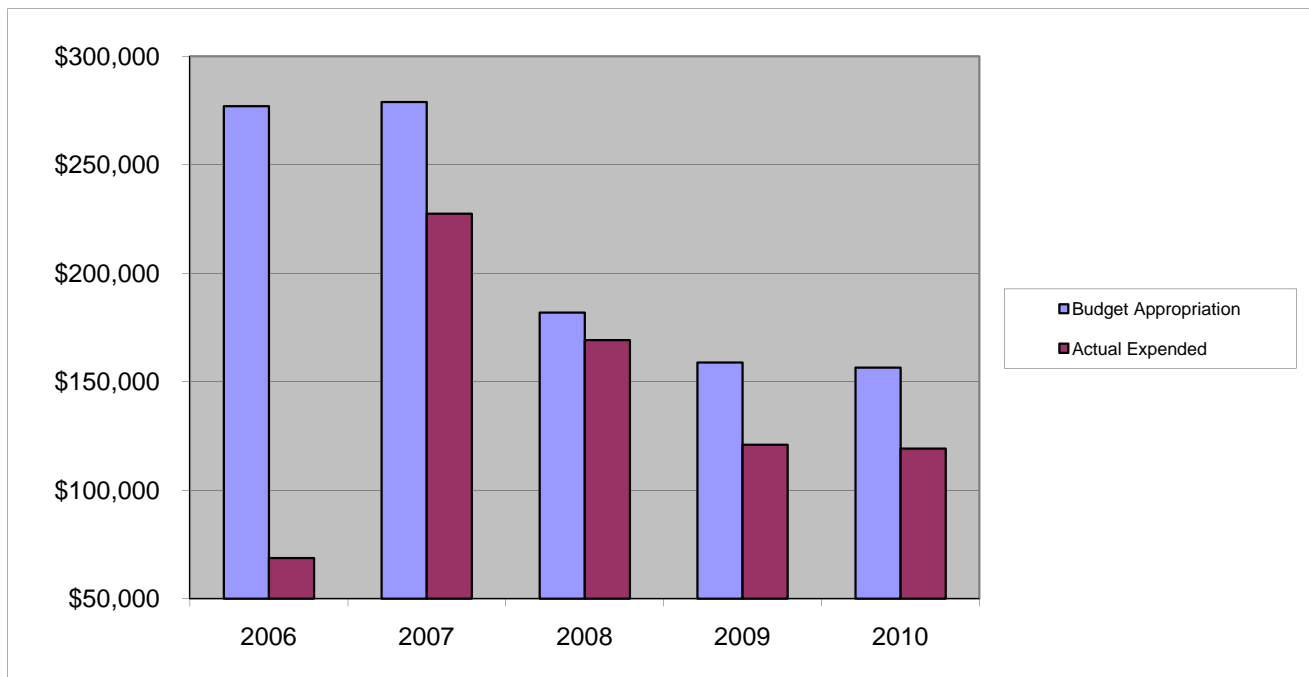


## ***COUNTY CLERK***

### ***Other Expenses - Miscellaneous***

|  | 2006          | 2007           | 2008           | 2009           | 2010           |
|--|---------------|----------------|----------------|----------------|----------------|
| Budget Appropriation                           | \$ 277,076.00 | \$ 279,016.00  | \$ 181,906.00  | \$ 158,946.00  | \$ 156,586.00  |
| Actual Expended                                | \$ 68,732.73  | \$ 227,475.33  | \$ 169,137.59  | \$ 120,966.29  | \$ 119,201.39  |
| Difference (App. - Exp.)                       | \$ 208,343.27 | \$ 51,540.67   | \$ 12,768.41   | \$ 37,979.71   | \$ 37,384.61   |
| % Expended                                     | 24.8%         | 81.5%          | 93.0%          | 76.1%          | 76.1%          |
| Total Budget Approp.                           | \$ 98,126,692 | \$ 102,912,559 | \$ 107,848,203 | \$ 107,667,916 | \$ 108,900,890 |
| % of Total Budget Approp.                      | 0.28%         | 0.27%          | 0.17%          | 0.15%          | 0.14%          |
| Five Year Average (Mean) Budget Appropriation: |               |                |                |                | \$ 210,706.00  |
| Five Year Average (Mean) Budget Expended:      |               |                |                |                | \$ 141,102.67  |
| Difference:                                    |               |                |                |                | \$ 69,603.33   |



|                                   |                   |
|-----------------------------------|-------------------|
| <b>2011 BUDGET APPROPRIATION:</b> | <b>\$ 148,580</b> |
| 2010 Budget Appropriation         | \$ 156,586        |
| \$ Change                         | \$ (8,006)        |
| % Change:                         | -5.1%             |

|                           |              |
|---------------------------|--------------|
| 2011 Budget Appropriation | \$ 148,580   |
| 2006 Budget Appropriation | \$ 277,076   |
| \$ Change                 | \$ (128,496) |
| % Change                  | -46.4%       |