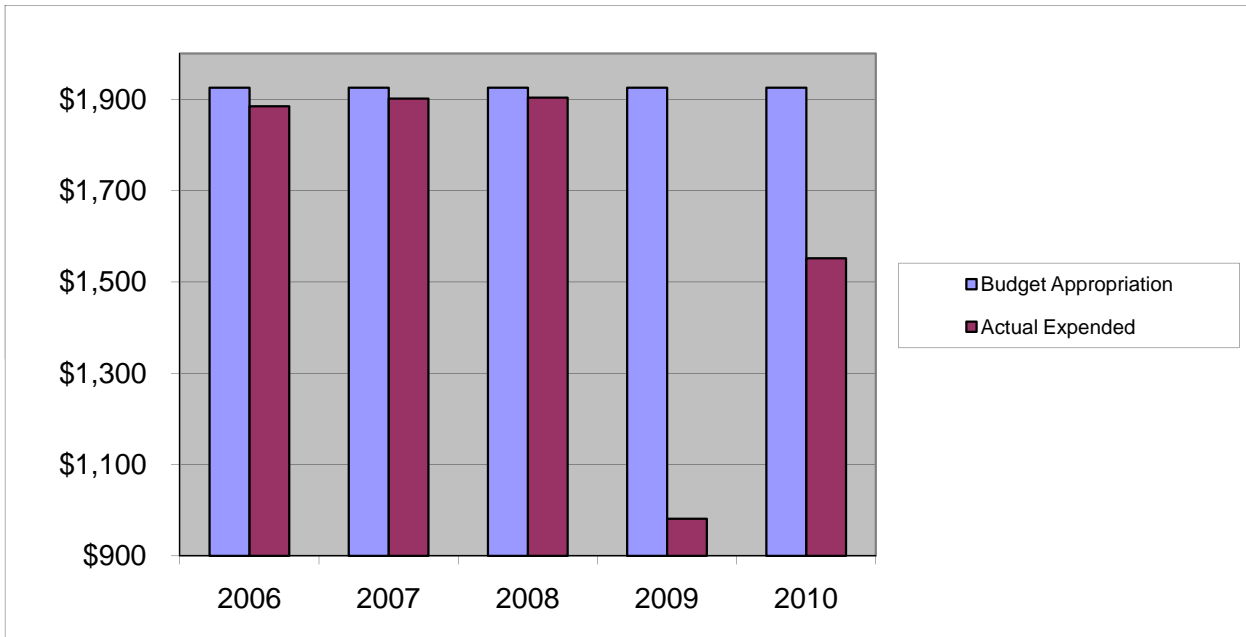


## **BUDGET MANAGEMENT**

### **Other Expenses**

	2006	2007	2008	2009	2010
Budget Appropriation	\$ 1,925.00	\$ 1,925.00	\$ 1,925.00	\$ 1,925.00	\$ 1,925.00
Actual Expended	\$ 1,884.28	\$ 1,901.24	\$ 1,903.07	\$ 980.86	\$ 1,551.53
Difference (App. - Exp.)	\$ 40.72	\$ 23.76	\$ 21.93	\$ 944.14	\$ 373.47
% Expended	97.9%	98.8%	98.9%	51.0%	80.6%
Total Budget Approp.	\$ 98,126,692	\$ 102,912,559	\$ 107,848,203	\$ 107,667,916	\$ 108,900,890
% of Total Budget Approp.	0.002%	0.002%	0.002%	0.002%	0.002%
Five Year Average (Mean) Budget Appropriation:					\$ 1,925.00
Five Year Average (Mean) Budget Expended:					\$ 1,644.20
Difference:					\$ 280.80



<b>2011 BUDGET APPROPRIATION:</b>	<b>\$ 1,925</b>
2010 Budget Appropriation	\$ 1,925
\$ Change	\$ -
% Change:	0.0%

2011 Budget Appropriation	\$ 1,925
2006 Budget Appropriation	\$ 1,925
\$ Change	\$ -
% Change	0.0%