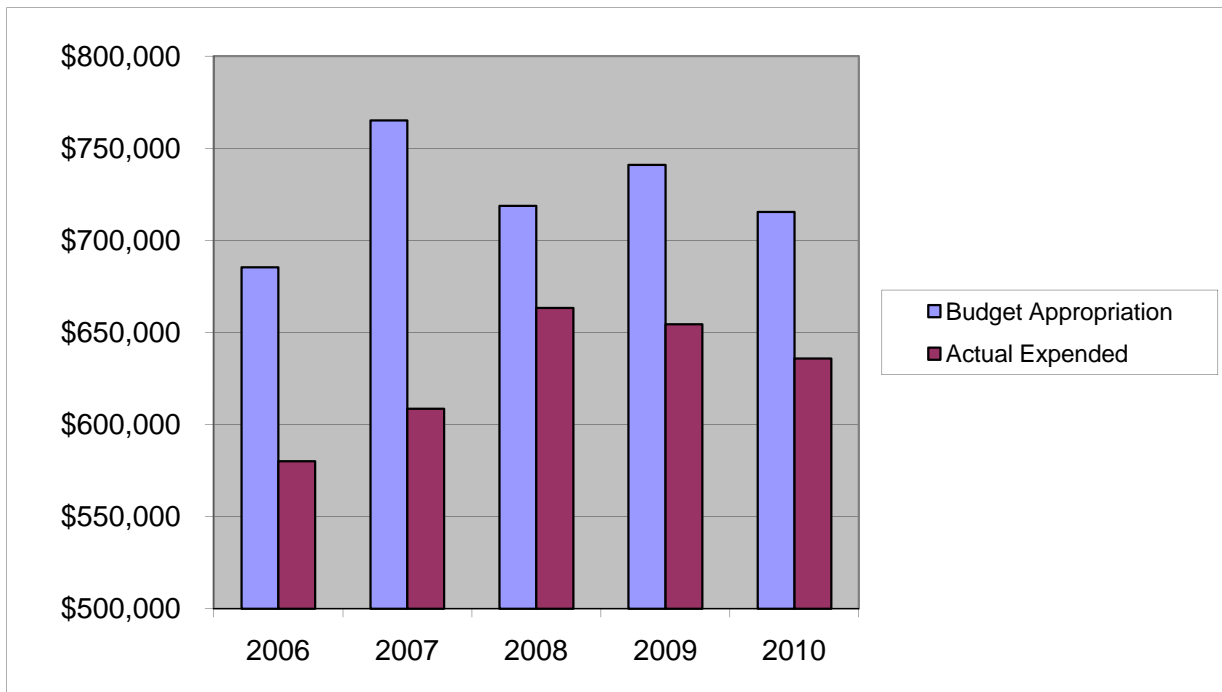


## ***BRIDGES*** ***Salaries & Wages***

	2006	2007	2008	2009	2010
Budget Appropriation	\$ 685,292.00	\$ 765,029.00	\$ 718,665.00	\$ 740,861.00	\$ 715,407.00
Actual Expended	\$ 580,123.71	\$ 608,613.17	\$ 663,358.98	\$ 654,497.09	\$ 635,876.96
Difference (App. - Exp.)	\$ 105,168.29	\$ 156,415.83	\$ 55,306.02	\$ 86,363.91	\$ 79,530.04
% Expended	84.7%	79.6%	92.3%	88.3%	88.9%
Total Budget Approp.	\$ 98,126,692	\$ 102,912,559	\$ 107,848,203	\$ 107,667,916	\$108,900,890
% of Total Budget Approp.	0.70%	0.74%	0.67%	0.69%	0.66%
Five Year Average (Mean) Budget Appropriation:					\$ 725,050.80
Five Year Average (Mean) Budget Expended:					\$ 628,493.98
Difference:					\$ 96,556.82



<b>2011 BUDGET APPROPRIATION:</b>	<b>\$ 682,581</b>
2010 Budget Appropriation	\$ 715,407
\$ Change	\$ (32,826)
% Change:	-4.6%

2011 Budget Appropriation	\$ 682,581
2006 Budget Appropriation	\$ 685,292
\$ Change	\$ (2,711)
% Change	-0.4%