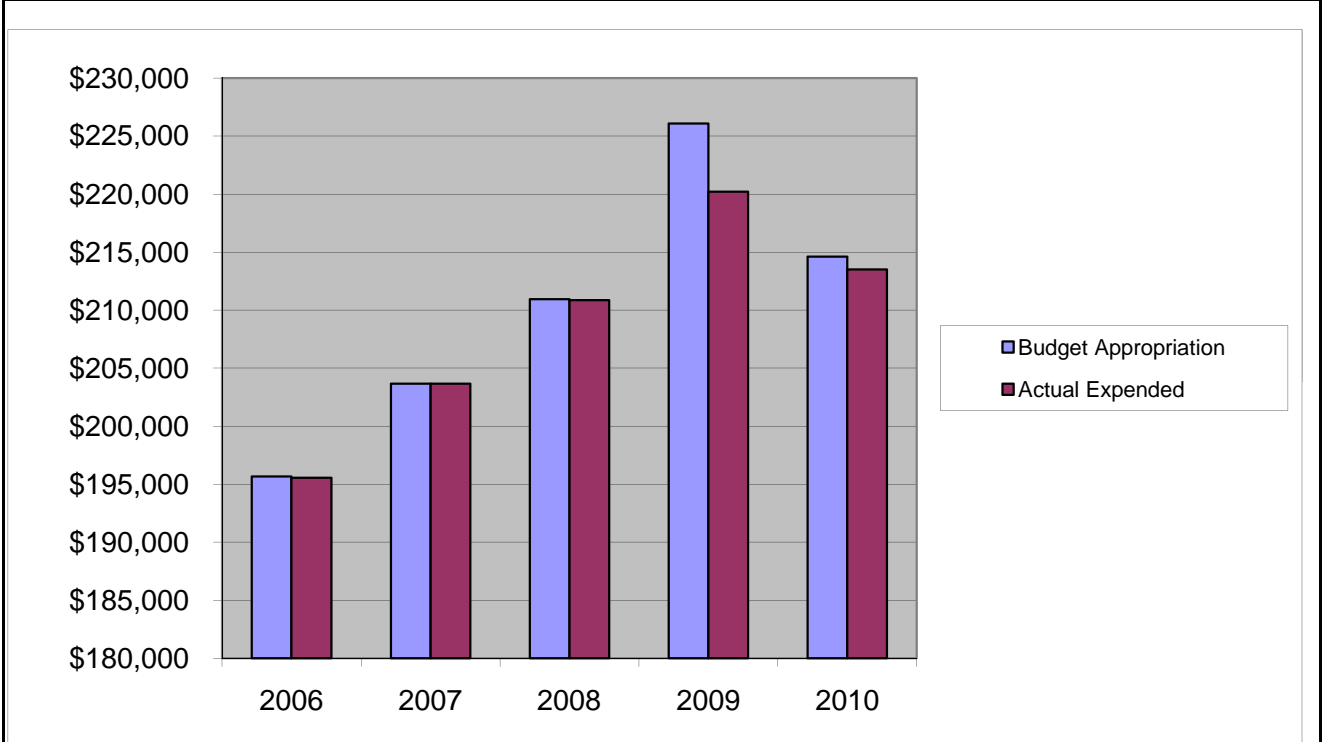


COUNTY ADMINISTRATOR'S OFFICE
Salaries & Wages

	2006	2007	2008	2009	2010
Budget Appropriation	\$ 195,656.00	\$ 203,667.00	\$ 210,953.00	\$ 226,080.00	\$ 214,615.00
Actual Expended	\$ 195,555.84	\$ 203,666.48	\$ 210,852.90	\$ 220,206.76	\$ 213,499.64
Difference (App. - Exp.)	\$ 100.16	\$ 0.52	\$ 100.10	\$ 5,873.24	\$ 1,115.36
% Expended	99.9%	100.0%	100.0%	97.4%	99.5%
Total Budget Approp.	\$ 98,126,692	\$ 102,912,559	\$ 107,848,203	\$ 107,667,916	\$ 108,900,890
% of Total Budget Approp.	0.20%	0.20%	0.20%	0.21%	0.20%

Five Year Average (Mean) Budget Appropriation:	\$ 210,194.20
Five Year Average (Mean) Budget Expended:	\$ 208,756.32
Difference:	\$ 1,437.88



2011 BUDGET APPROPRIATION:	\$ 214,408
2010 Budget Appropriation	\$ 214,615
\$ Change	\$ (207)
% Change:	-0.1%

2011 Budget Appropriation	\$ 214,408
2006 Budget Appropriation	\$ 195,656
\$ Change	\$ 18,752
% Change	9.6%