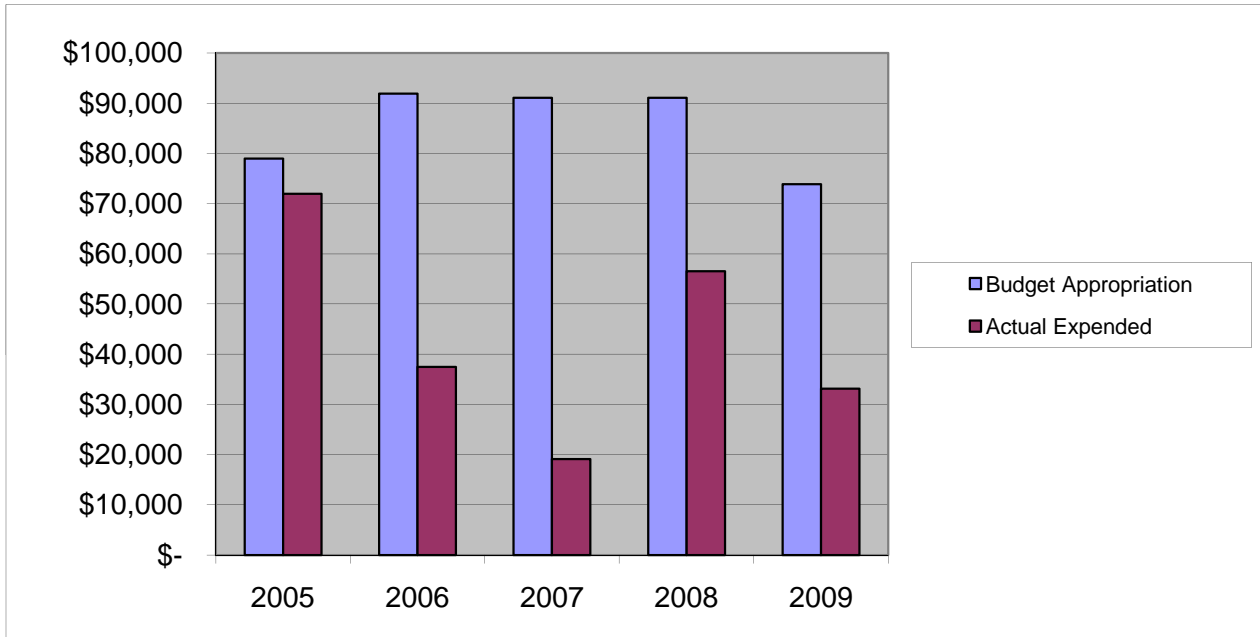


COUNTY TREASURER'S OFFICE
Other Expenses

	2005	2006	2007	2008	2009
Budget Appropriation	\$ 78,964.00	\$ 91,915.00	\$ 91,070.00	\$ 91,070.00	\$ 73,850.00
Actual Expended	\$ 71,964.00	\$ 37,489.66	\$ 19,097.20	\$ 56,504.49	\$ 33,118.40
Difference (App. - Exp.)	\$ 7,000.00	\$ 54,425.34	\$ 71,972.80	\$ 34,565.51	\$ 40,731.60
% Expended	91.1%	40.8%	21.0%	62.0%	44.8%
Total Budget Approp.	\$ 92,061,376	\$ 98,126,692	\$ 102,912,559	\$ 107,848,203	\$ 107,667,916
% of Total Budget Approp.	0.09%	0.09%	0.09%	0.08%	0.07%
Five Year Average (Mean) Budget Appropriation:					\$ 85,373.80
Five Year Average (Mean) Budget Expended:					\$ 43,634.75
Difference:					\$ 41,739.05



2010 BUDGET APPROPRIATION:	\$ 54,200
2009 Budget Appropriation	\$ 73,850
\$ Change	\$ (19,650)
% Change:	-26.6%

2010 Budget Appropriation	\$ 54,200
2005 Budget Appropriation	\$ 78,964
\$ Change	\$ (24,764)
% Change	-31.4%