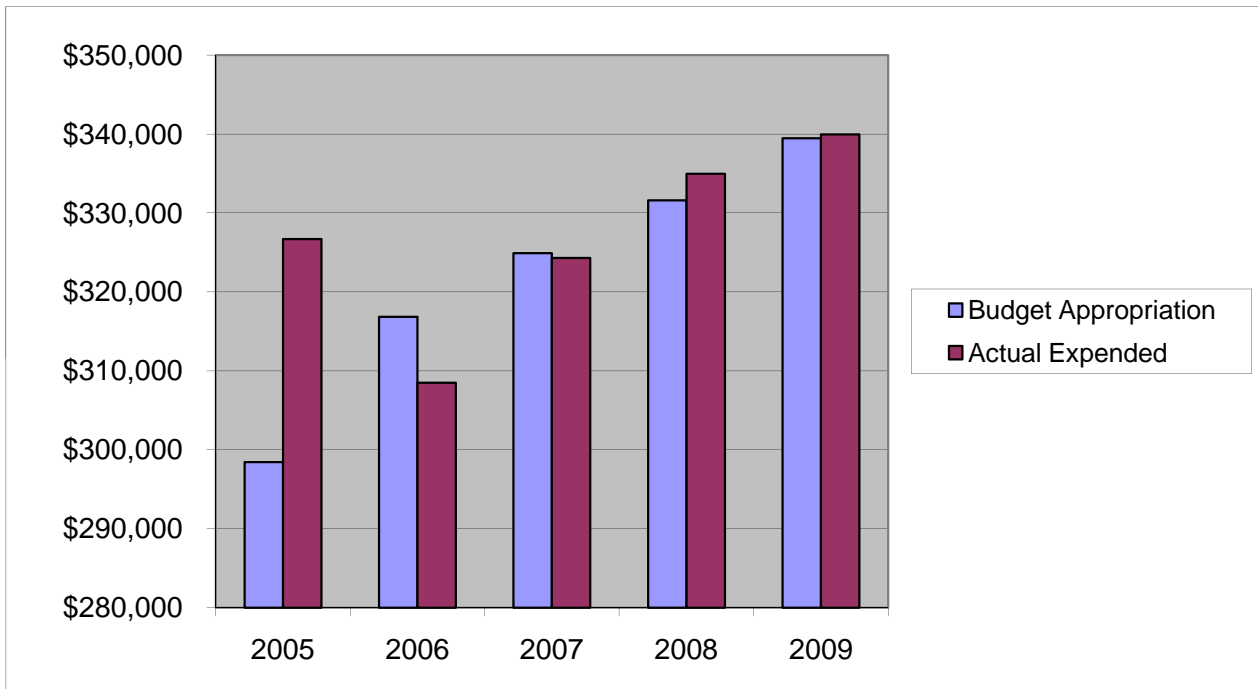


## **COUNTY SURROGATE**

### **Salaries & Wages**

	2005	2006	2007	2008	2009
Budget Appropriation	\$ 298,422.00	\$ 316,863.00	\$ 324,899.00	\$ 331,596.00	\$ 339,473.00
Actual Expended	\$ 326,690.75	\$ 308,476.36	\$ 324,290.70	\$ 334,968.30	\$ 339,955.69
Difference (App. - Exp.)	\$ (28,268.75)	\$ 8,386.64	\$ 608.30	\$ (3,372.30)	\$ (482.69)
% Expended	109.5%	97.4%	99.8%	101.0%	100.1%
Total Budget Approp.	\$ 92,061,376	\$ 98,126,692	\$ 102,912,559	\$ 107,848,203	\$ 107,667,916
% of Total Budget Approp.	0.32%	0.32%	0.32%	0.31%	0.32%
Five Year Average (Mean) Budget Appropriation:					\$ 322,250.60
Five Year Average (Mean) Budget Expended:					\$ 326,876.36
Difference:					\$ (4,625.76)



<b>2010 BUDGET APPROPRIATION:</b>	<b>\$ 346,732</b>
2009 Budget Appropriation	\$ 339,473
\$ Change	\$ 7,259
% Change:	2.1%

Proposed 2010 Budget Appropriation	\$ 346,732
2005 Budget Appropriation	\$ 298,422
\$ Change	\$ 48,310
% Change	16.2%