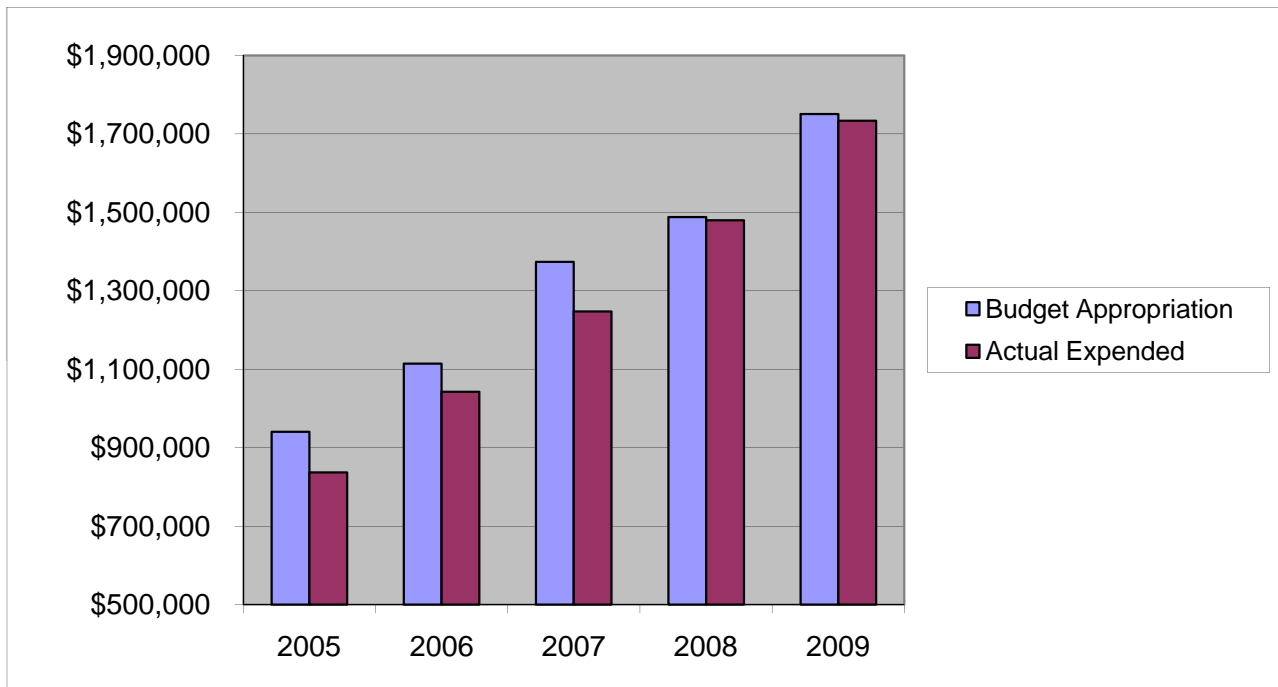


SHERIFF'S OFFICE - JUDICIAL

Salaries & Wages

	2005	2006	2007	2008	2009
Budget Appropriation	\$ 940,235.00	\$ 1,114,673.00	\$ 1,373,393.00	\$ 1,488,200.00	\$ 1,751,112.00
Actual Expended	\$ 837,164.46	\$ 1,042,880.11	\$ 1,247,540.67	\$ 1,480,054.41	\$ 1,733,418.68
Difference (App. - Exp.)	\$ 103,070.54	\$ 71,792.89	\$ 125,852.33	\$ 8,145.59	\$ 17,693.32
% Expended	89.0%	93.6%	90.8%	99.5%	99.0%
Total Budget Approp.	\$ 92,061,376	\$ 98,126,692	\$ 102,912,559	\$ 107,848,203	\$ 107,667,916
% of Total Budget Approp.	1.02%	1.14%	1.33%	1.38%	1.63%
Five Year Average (Mean) Budget Appropriation:					\$ 1,333,522.60
Five Year Average (Mean) Budget Expended:					\$ 1,268,211.67
Difference:					\$ 65,310.93



2010 BUDGET APPROPRIATION:	\$ 1,868,330
2009 Budget Appropriation	\$ 1,751,112
\$ Change	\$ 117,218
% Change:	6.7%

2010 Budget Appropriation	\$ 1,868,330
2005 Budget Appropriation	\$ 940,235
\$ Change	\$ 928,095
% Change	98.7%