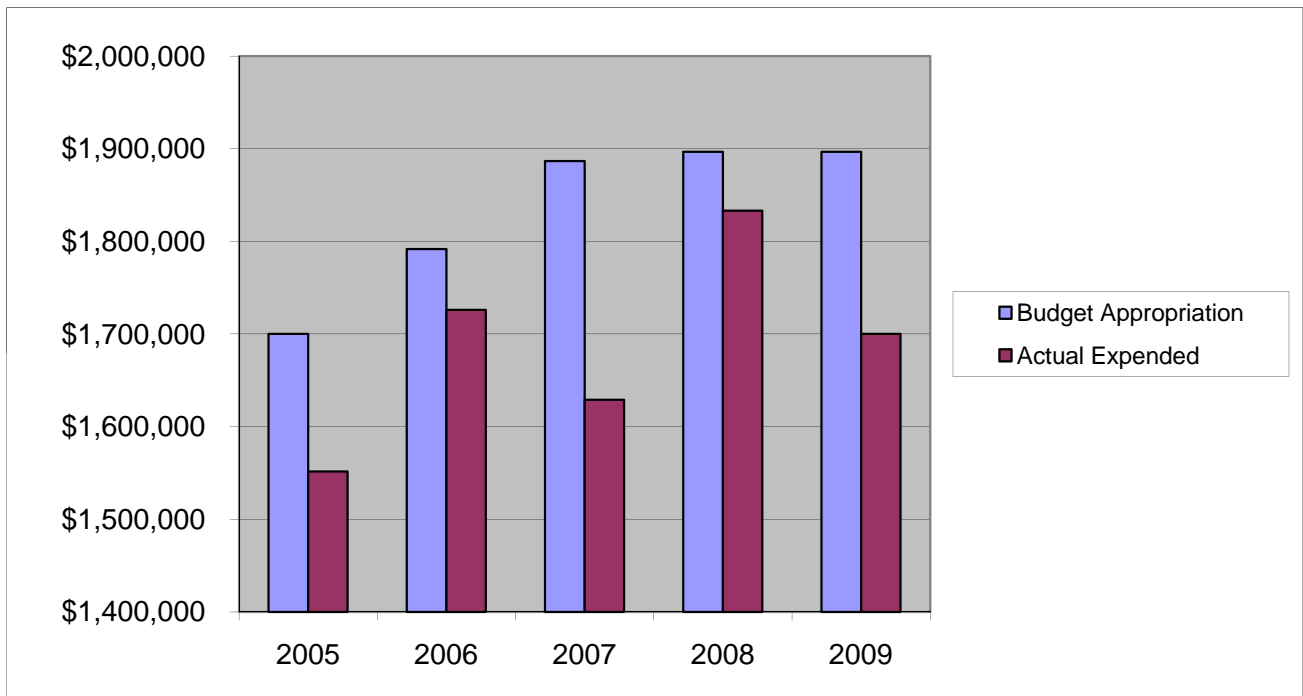


ROADS & CULVERTS

Other Expenses

	2005	2006	2007	2008	2009
Budget Appropriation	\$ 1,700,000.00	\$ 1,791,633.00	\$ 1,886,617.00	\$ 1,896,660.00	\$ 1,896,660.00
Actual Expended	\$ 1,551,675.53	\$ 1,726,185.52	\$ 1,629,087.45	\$ 1,833,194.86	\$ 1,700,135.63
Difference (App. - Exp.)	\$ 148,324.47	\$ 65,447.48	\$ 257,529.55	\$ 63,465.14	\$ 196,524.37
% Expended	91.3%	96.3%	86.3%	96.7%	89.6%
Total Budget Approp.	\$ 92,061,376	\$ 98,126,692	\$ 102,912,559	\$ 107,848,203	\$ 107,667,916
% of Total Budget Approp.	1.85%	1.83%	1.83%	1.76%	1.76%
Five Year Average (Mean) Budget Appropriation:					\$ 1,834,314.00
Five Year Average (Mean) Budget Expended:					\$ 1,688,055.80
Difference:					\$ 146,258.20



2010 BUDGET APPROPRIATION:	\$ 1,896,660
2009 Budget Appropriation	\$ 1,896,660
\$ Change	\$ -
% Change:	0.0%

2010 Budget Appropriation	\$ 1,896,660
2005 Budget Appropriation	\$ 1,700,000
\$ Change	\$ 196,660
% Change	11.6%