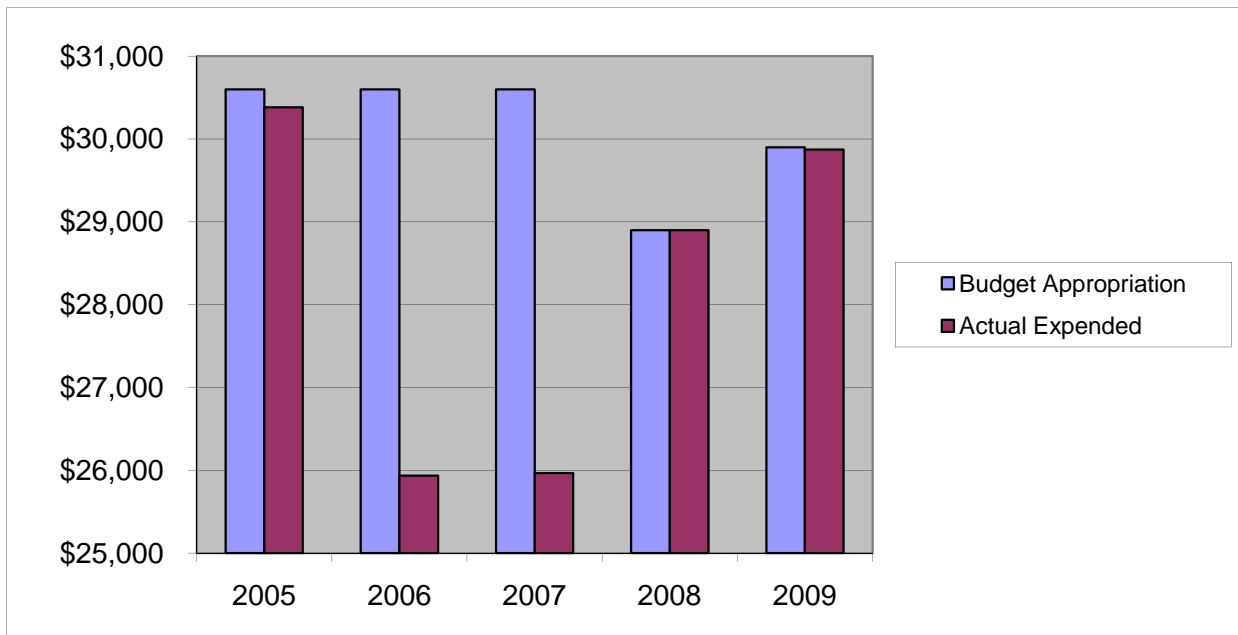


LIGHTING OF HIGHWAYS & BRIDGES

	2005	2006	2007	2008	2009
Budget Appropriation	\$ 30,600.00	\$ 30,600.00	\$ 30,600.00	\$ 28,900.00	\$ 29,900.00
Actual Expended	\$ 30,381.99	\$ 25,933.16	\$ 25,966.87	\$ 28,900.00	\$ 29,870.00
Difference (App. - Exp.)	\$ 218.01	\$ 4,666.84	\$ 4,633.13	\$ -	\$ 30.00
% Expended	99.3%	84.7%	84.9%	100.0%	99.9%
Total Budget Approp.	\$ 92,061,376	\$ 98,126,692	\$ 102,912,559	\$ 107,848,203	\$ 107,667,916
% of Total Budget Approp.	0.03%	0.03%	0.03%	0.03%	0.03%
Five Year Average (Mean) Budget Appropriation:					\$ 30,120.00
Five Year Average (Mean) Budget Expended:					\$ 28,210.40
Difference:					\$ 1,909.60



2010 BUDGET APPROPRIATION:	\$ 30,065
2009 Budget Appropriation	\$ 29,900
\$ Change	\$ 165
% Change:	0.6%

2010 Budget Appropriation	\$ 30,065
2005 Budget Appropriation	\$ 30,600
\$ Change	\$ (535)
% Change	-1.7%