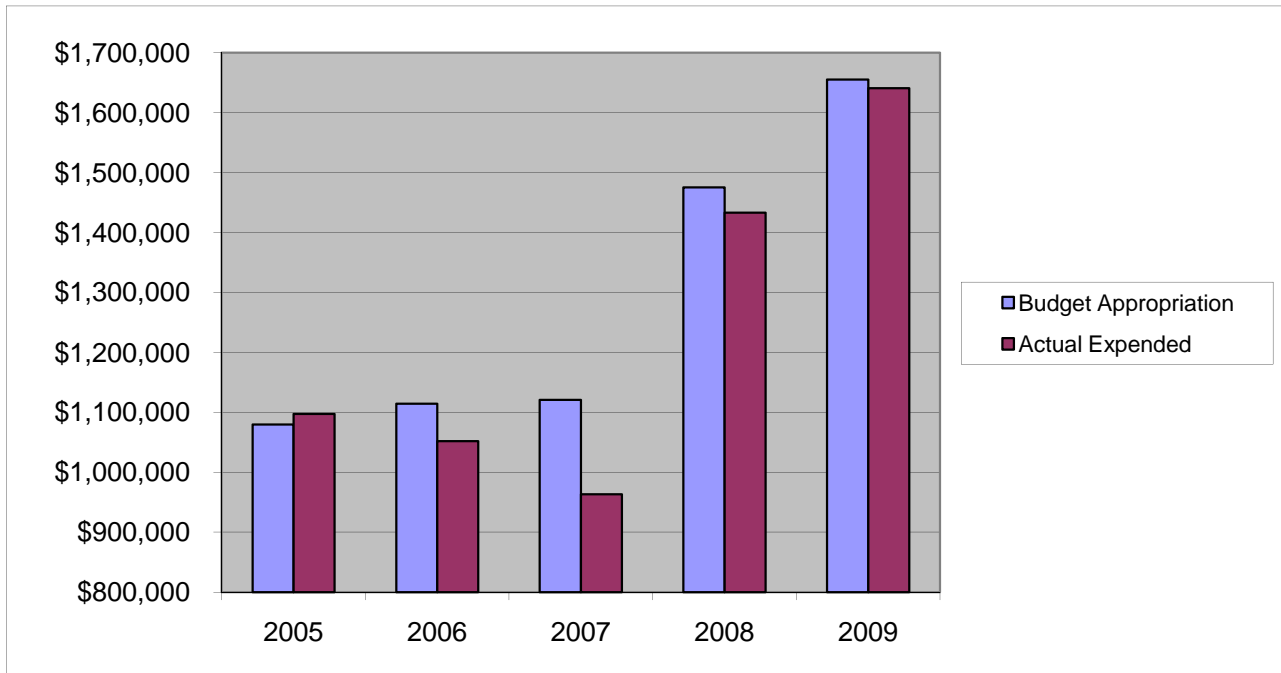


## *Homestead* *Other Expenses*

	2005	2006	2007	2008	2009
Budget Appropriation	\$ 1,079,495.00	\$ 1,114,385.00	\$ 1,120,777.00	\$ 1,475,436.00	\$ 1,655,153.00
Actual Expended	\$ 1,097,495.47	\$ 1,051,943.69	\$ 963,288.30	\$ 1,432,825.02	\$ 1,640,740.13
Difference (App. - Exp.)	\$ (18,000.47)	\$ 62,441.31	\$ 157,488.70	\$ 42,610.98	\$ 14,412.87
% Expended	101.7%	94.4%	85.9%	97.1%	99.1%
Total Budget Approp.	\$ 92,061,376	\$ 98,126,692	\$ 102,912,559	\$ 107,848,203	\$ 107,667,916
% of Total Budget Approp.	1.17%	1.14%	1.09%	1.37%	1.54%
Five Year Average (Mean) Budget Appropriation:					\$ 1,289,049.20
Five Year Average (Mean) Budget Expended:					\$ 1,237,258.52
Difference:					\$ 51,790.68



<b>2010 BUDGET APPROPRIATION:</b>	<b>\$ 1,663,871</b>
2009 Budget Appropriation	\$ 1,655,153
\$ Change	\$ 8,718
% Change:	0.5%

2010 Budget Appropriation	\$ 1,663,871
2005 Budget Appropriation	\$ 1,079,495
\$ Change	\$ 584,376
% Change	54.1%