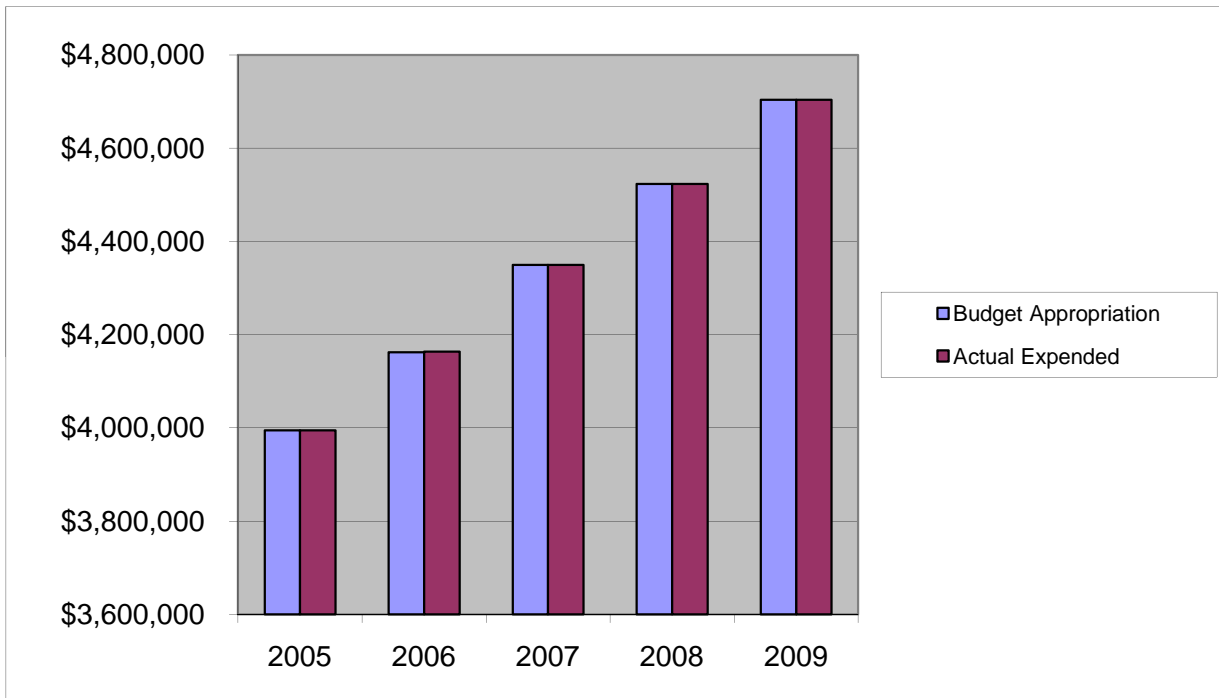


## COMMUNITY COLLEGE

	2005	2006	2007	2008	2009
Budget Appropriation	\$ 3,994,705.00	\$ 4,162,543.00	\$ 4,349,500.00	\$ 4,523,500.00	\$ 4,704,240.00
Actual Expended	\$ 3,994,705.00	\$ 4,163,500.00	\$ 4,349,500.00	\$ 4,523,500.00	\$ 4,704,240.00
Difference (App. - Exp.)	\$ -	\$ (957.00)	\$ -	\$ -	\$ -
% Expended	100.0%	100.0%	100.0%	100.0%	100.0%
Total Budget Approp.	\$ 92,061,376	\$ 98,126,692	\$ 102,912,559	\$ 107,848,203	\$ 107,667,916
% of Total Budget Approp.	4.34%	4.24%	4.23%	4.19%	4.37%
Five Year Average (Mean) Budget Appropriation:					\$ 4,346,897.60
Five Year Average (Mean) Budget Expended:					\$ 4,347,089.00
Difference:					\$ (191.40)



<b>2010 BUDGET APPROPRIATION:</b>	<b>\$ 4,797,260</b>
2009 Budget Appropriation	\$ 4,704,240
\$ Change	\$ 93,020
% Change:	2.0%

2010 Budget Appropriation	\$ 4,797,260
2005 Budget Appropriation	\$ 3,994,705
\$ Change	\$ 802,555
% Change	20.1%