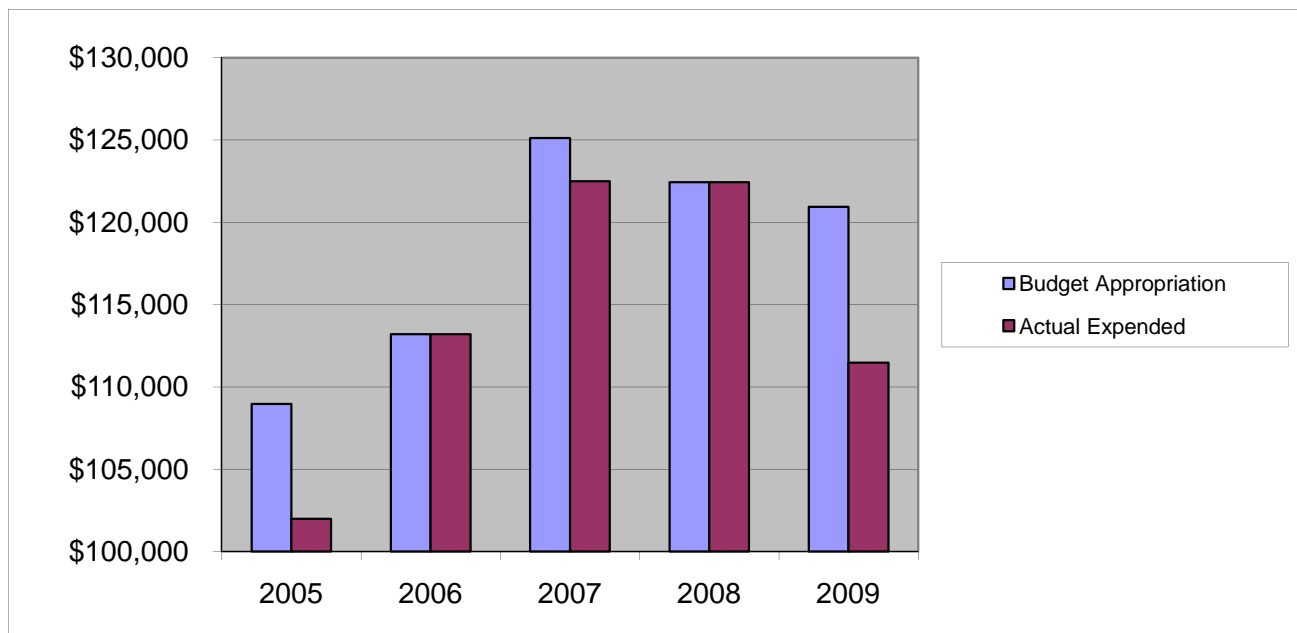


COUNTY COUNSEL

Salaries & Wages

	2005	2006	2007	2008	2009
Budget Appropriation	\$ 108,952.00	\$ 113,201.00	\$ 125,113.00	\$ 122,445.00	\$ 120,936.00
Actual Expended	\$ 101,980.03	\$ 113,201.04	\$ 122,486.14	\$ 122,444.98	\$ 111,477.18
Difference (App. - Exp.)	\$ 6,971.97	\$ (0.04)	\$ 2,626.86	\$ 0.02	\$ 9,458.82
% Expended	93.6%	100.0%	97.9%	100.0%	92.2%
Total Budget Approp.	\$ 92,061,376	\$ 98,126,692	\$ 102,912,559	\$ 107,848,203	\$ 107,667,916
% of Total Budget Approp.	0.12%	0.12%	0.12%	0.11%	0.11%
Five Year Average (Mean) Budget Appropriation:					\$ 118,129.40
Five Year Average (Mean) Budget Expended:					\$ 114,317.87
Difference:					\$ 3,811.53



2010 BUDGET APPROPRIATION:	\$ 81,582
2009 Budget Appropriation	\$ 120,936
\$ Change	\$ (39,354)
% Change:	-32.5%

2010 Budget Appropriation	\$ 81,582
2005 Budget Appropriation	\$ 108,952
\$ Change	\$ (27,370)
% Change	-25.1%