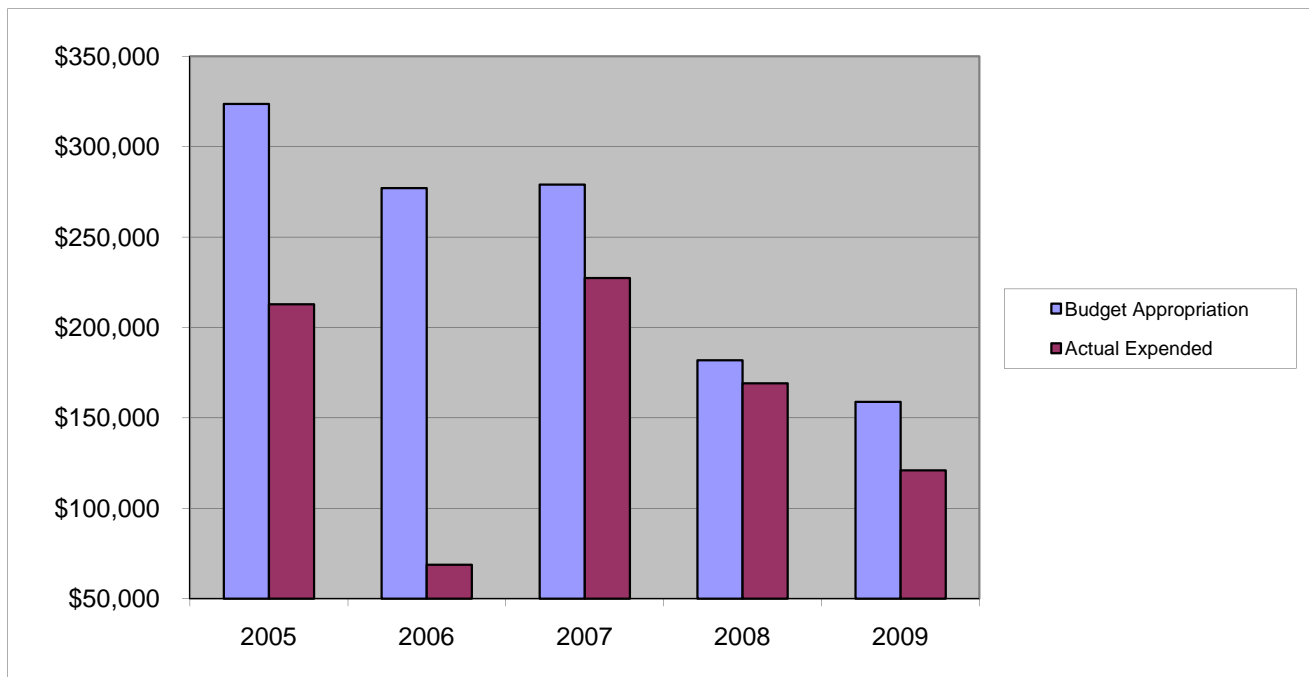


## ***COUNTY CLERK***

### ***Other Expenses - Miscellaneous***

	2005	2006	2007	2008	2009
Budget Appropriation	\$ 323,730.00	\$ 277,076.00	\$ 279,016.00	\$ 181,906.00	\$ 158,946.00
Actual Expended	\$ 212,880.35	\$ 68,732.73	\$ 227,475.33	\$ 169,137.59	\$ 120,966.29
Difference (App. - Exp.)	\$ 110,849.65	\$ 208,343.27	\$ 51,540.67	\$ 12,768.41	\$ 37,979.71
% Expended	65.8%	24.8%	81.5%	93.0%	76.1%
Total Budget Approp.	\$ 92,061,376	\$ 98,126,692	\$ 102,912,559	\$ 107,848,203	\$ 107,667,916
% of Total Budget Approp.	0.35%	0.28%	0.27%	0.17%	0.15%
Five Year Average (Mean) Budget Appropriation:					\$ 244,134.80
Five Year Average (Mean) Budget Expended:					\$ 159,838.46
Difference:					\$ 84,296.34



<b>2010 BUDGET APPROPRIATION:</b>	<b>\$ 156,586</b>
2009 Budget Appropriation	\$ 158,946
\$ Change	\$ (2,360)
% Change:	-1.5%

2010 Budget Appropriation	\$ 156,586
2005 Budget Appropriation	\$ 323,730
\$ Change	\$ (167,144)
% Change	-51.6%