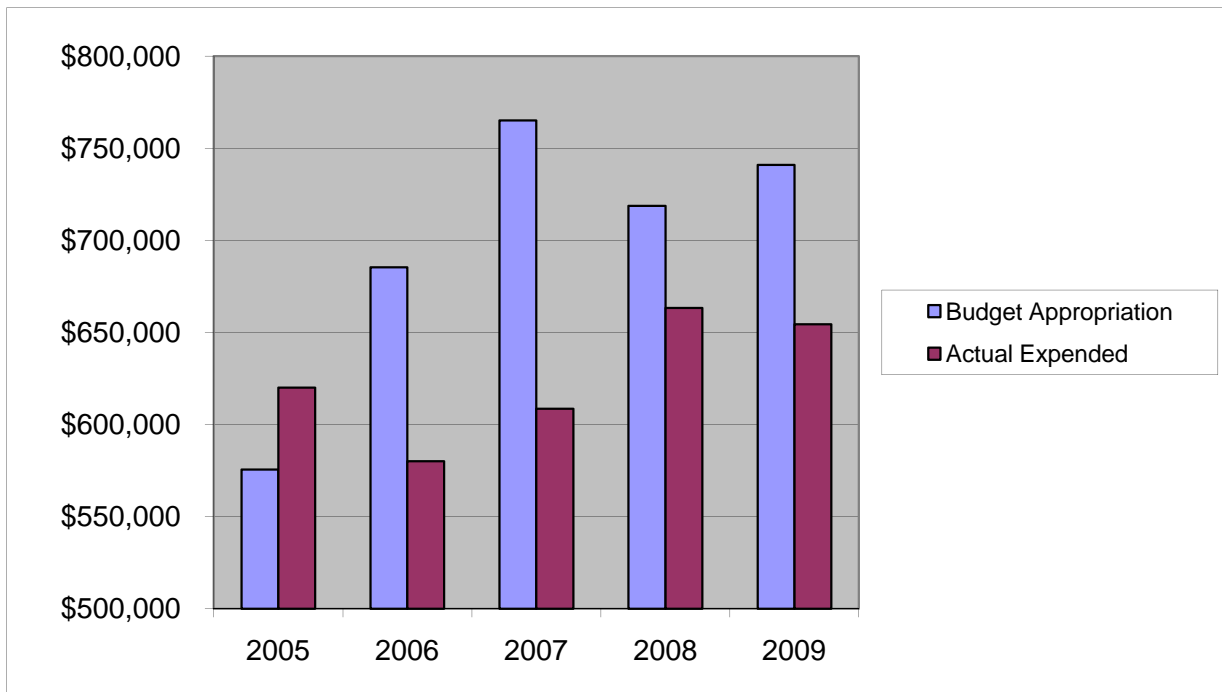


## ***BRIDGES***

### ***Salaries & Wages***

	2005	2006	2007	2008	2009
Budget Appropriation	\$ 575,533.00	\$ 685,292.00	\$ 765,029.00	\$ 718,665.00	\$ 740,861.00
Actual Expended	\$ 619,959.58	\$ 580,123.71	\$ 608,613.17	\$ 663,358.98	\$ 654,497.09
Difference (App. - Exp.)	\$ (44,426.58)	\$ 105,168.29	\$ 156,415.83	\$ 55,306.02	\$ 86,363.91
% Expended	107.7%	84.7%	79.6%	92.3%	88.3%
Total Budget Approp.	\$ 92,061,376	\$ 98,126,692	\$ 102,912,559	\$ 107,848,203	\$ 107,667,916
% of Total Budget Approp.	0.63%	0.70%	0.74%	0.67%	0.69%
Five Year Average (Mean) Budget Appropriation:					\$ 697,076.00
Five Year Average (Mean) Budget Expended:					\$ 625,310.51
Difference:					\$ 71,765.49



<b>2010 BUDGET APPROPRIATION:</b>	<b>\$ 715,407</b>
2009 Budget Appropriation	\$ 740,861
\$ Change	\$ (25,454)
% Change:	-3.4%

2010 Budget Appropriation	\$ 715,407
2005 Budget Appropriation	\$ 575,533
\$ Change	\$ 139,874
% Change	24.3%