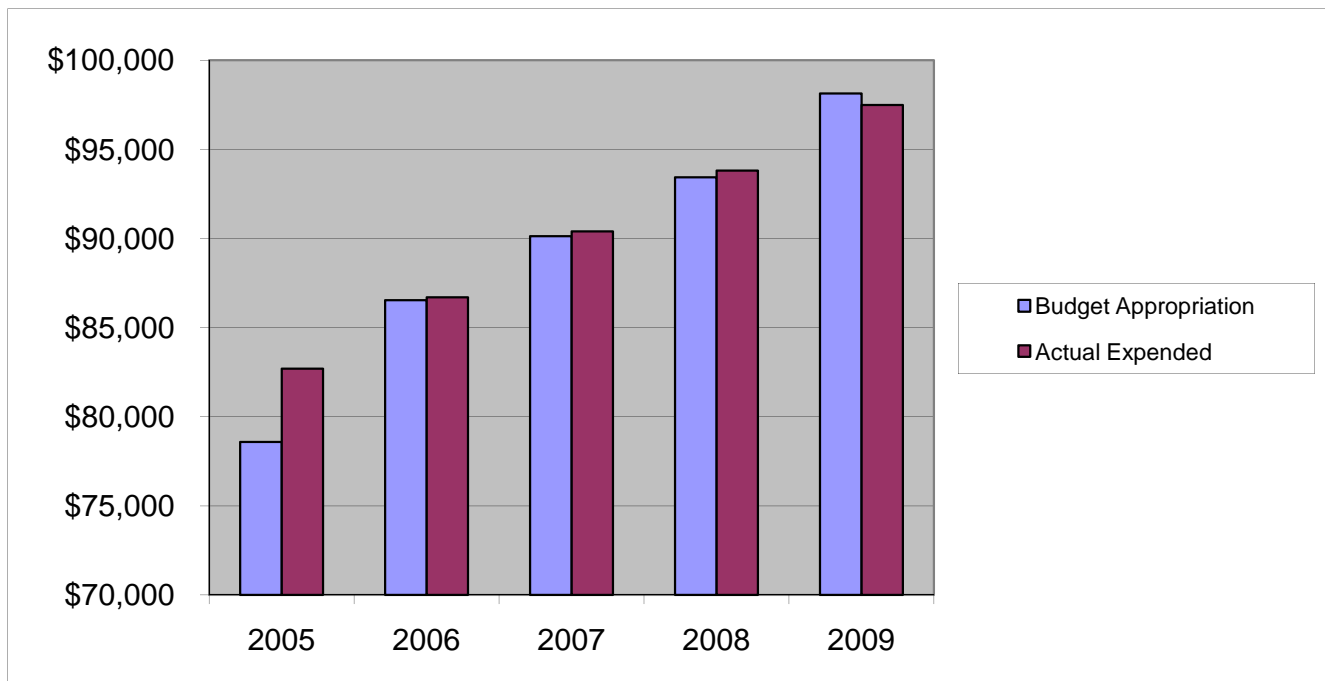


COUNTY ADJUSTER'S OFFICE

Salaries & Wages

	2005	2006	2007	2008	2009
Budget Appropriation	\$ 78,594.00	\$ 86,535.00	\$ 90,125.00	\$ 93,420.00	\$ 98,124.00
Actual Expended	\$ 82,688.00	\$ 86,701.88	\$ 90,401.76	\$ 93,812.50	\$ 97,478.50
Difference (App. - Exp.)	\$ (4,094.00)	\$ (166.88)	\$ (276.76)	\$ (392.50)	\$ 645.50
% Expended	105.2%	100.2%	100.3%	100.4%	99.3%
Total Budget Approp.	\$ 92,061,376	\$ 98,126,692	\$ 102,912,559	\$ 107,848,203	\$ 107,667,916
% of Total Budget Approp.	0.09%	0.09%	0.09%	0.09%	0.09%
Five Year Average (Mean) Budget Appropriation:					\$ 89,359.60
Five Year Average (Mean) Budget Expended:					\$ 90,216.53
Difference:					\$ (856.93)



2010 BUDGET APPROPRIATION:	\$ 100,914
2009 Budget Appropriation	\$ 98,124
\$ Change	\$ 2,790
% Change:	2.8%

2010 Budget Appropriation	\$ 100,914
2005 Budget Appropriation	\$ 78,594
\$ Change	\$ 22,320
% Change	28.4%