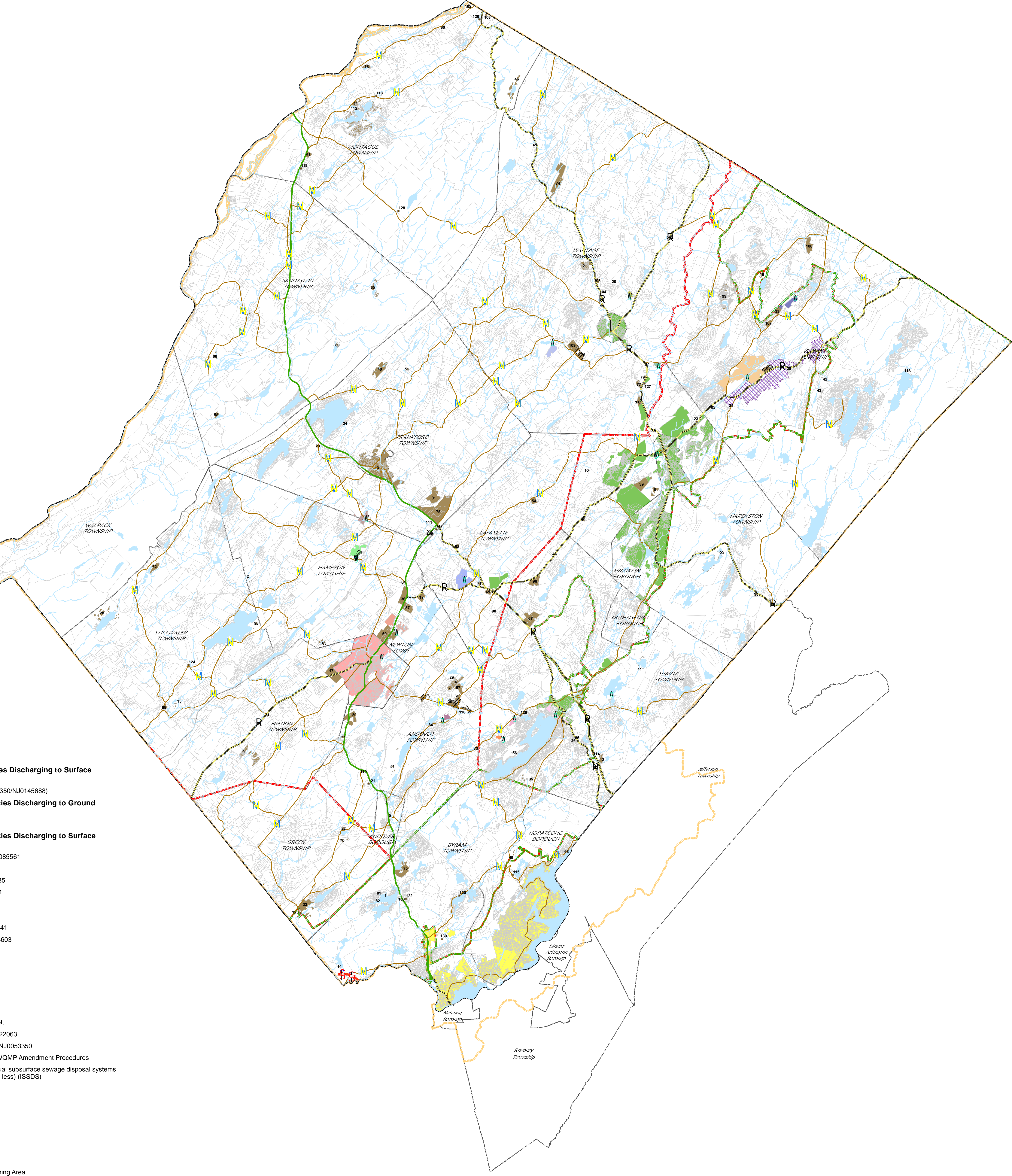


Table of Proposed Future Service Areas for Facilities Discharging to Ground Water (GW)

Table with 3 columns: Map #, Facility Name, NJPDES Permit #. Lists 130 facilities including residences, schools, and businesses across various municipalities.



Legend section detailing symbols for proposed future service areas for surface and ground water, surface water discharge locations, highlands boundaries, and roads. Includes color keys for various facility types and permit areas.

For more detail on the FWSA mapping within Byram Township, please refer to the Byram Township Highlands Conforming Municipal Chapter of the Sussex County Wastewater Management Plan adopted by the Department on July 24, 2012.

County of Sussex Wastewater Management Plan Wastewater Service Area Map. Includes the Sussex County seal and title information.

Notes regarding map accuracy, data sources, and disclaimer. Includes information about NJPDES permits, surface water discharge, and the date of the current version (June 1, 2017).