



DEPARTMENT OF ENGINEERING AND PLANNING  
 One Spring Street  
 Newton, New Jersey 07860  
 973-579-0430  
[dpw@sussex.nj.us](mailto:dpw@sussex.nj.us)  
 Matthew Sinke, P.E.  
 Division Director/Assistant County Engineer

**Construction Notice – Hopatcong St. Wall Repairs      Distributed: November 22, 2017**

**Project:**

**Hopatcong Street Wall Repairs**

Intersection of CR-609 (Lakeside Avenue) and Hopatcong Street, Hopatcong Borough

**Construction Forces:**

- Sussex County Office of Bridge & Traffic Safety
- Sussex County Division of Public Works

**Schedule:**

Anticipated Schedule is as Follows:

- Construction Start – November 8, 2017
- Construction Duration – Approximately 4 Weeks

**Hopatcong Street Ramp Closure:**

The north leg (Jefferson side) of the Hopatcong Street Ramp from CR-609 (Lakeside Avenue) will remain fully closed to traffic for the duration of the repair work. All access to Hopatcong Street from CR-609 (Lakeside Avenue) will need to be made from the south leg (Hopatcong Borough side) of the Hopatcong Street Ramp for the duration of construction.

**Construction Activities:**

- ✓ Closure of North Ramp - *Complete*
- ✓ Remove Existing Damaged Guide Rail - *Complete*
- ✓ Remove Damaged Portion of Masonry Retaining Wall - *Complete*
- ✓ Reconstruct Damaged Portion of Masonry Retaining Wall - *Complete*
- **Install New Guide Rail – Anticipated to be installed week of 11/27 – 12/1**
- Reopen North Ramp to Traffic

**Contact Information:**

For more information about this project please feel free to contact Matt Sinke, P.E., Assistant County Engineer, of the Sussex County Division of Engineering at 973-579-0430 or [dpw@sussex.nj.us](mailto:dpw@sussex.nj.us)



CR-609 & Hopatcong Street Damaged Retaining Wall – Prior to Repairs



CR-609 & Hopatcong Street Damaged Retaining Wall – Repairs Complete to Damaged Wall



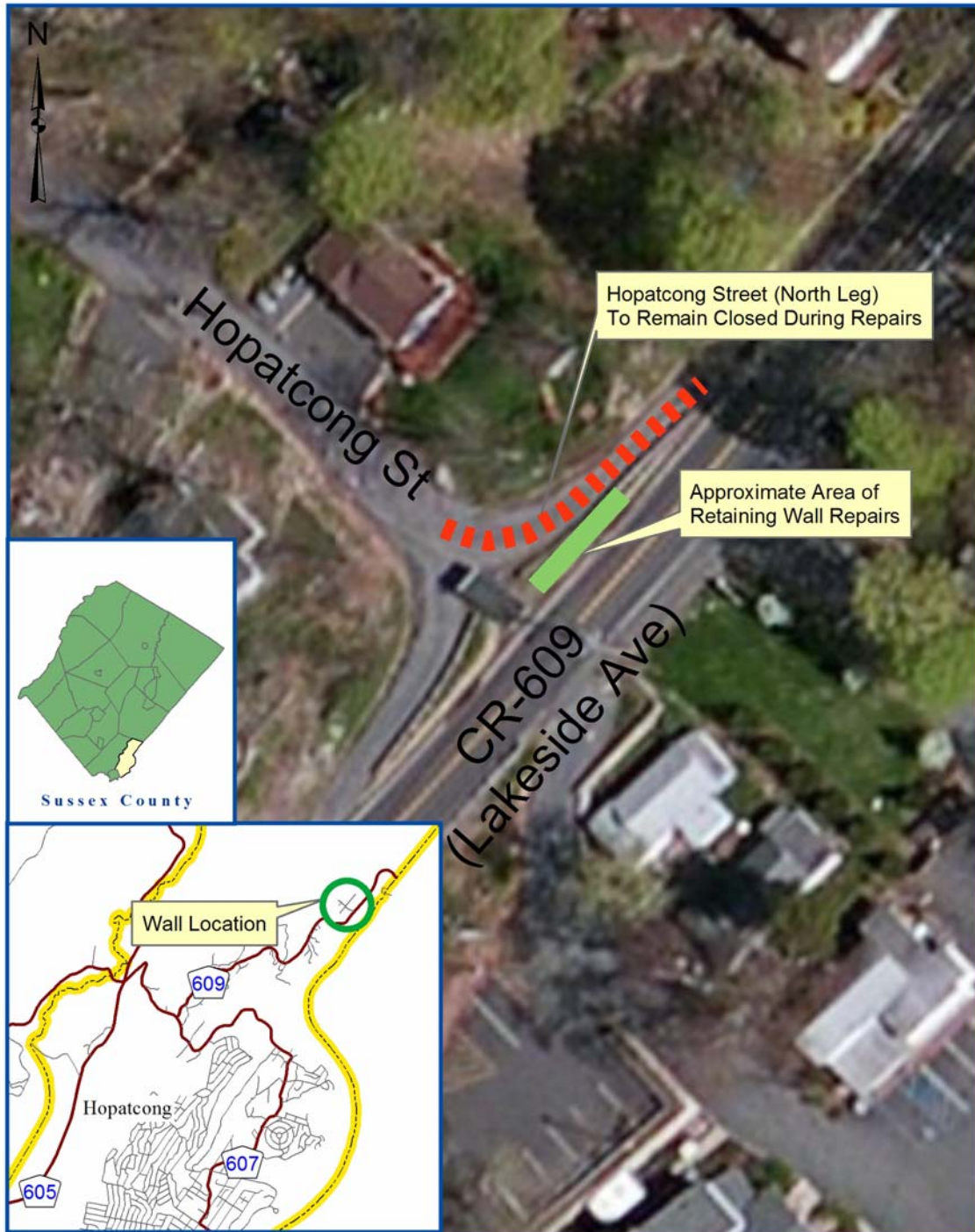
Hopatcong Street Retaining Wall Repairs in Progress

N:\04 Asset\01 Road\609\A\_A\Projects\Northwood Wall\Public Notices\201711122 PBL NTC 609 (Hopatcong Street Wall).doc



DEPARTMENT OF ENGINEERING AND PLANNING  
 One Spring Street  
 Newton, New Jersey 07860  
 973-579-0430  
[dpw@sussex.nj.us](mailto:dpw@sussex.nj.us)  
 Matthew Sinke, P.E.  
 Division Director/Assistant County Engineer

**Construction Notice – Hopatcong St. Wall Repairs Distributed: November 22, 2017**



Sussex County Division of Engineering  
 Hopatcong Street Retaining Wall Repairs  
 Location Map - Not to Scale