



DEPARTMENT OF ENGINEERING AND PLANNING
 Division of Engineering
 One Spring Street
 Newton, New Jersey 07860
 973-579-0430
 dpw@sussex.nj.us
 Matthew R. Sinke, P.E.
 Division Director/Assistant County Engineer

Project Notice – CR 613 White Deer Plaza

Distributed: April 26, 2017

Project:

Replacement of the CR 613 median island located in the White Deer Plaza, Lake Mohawk in Sparta Twp.

Designer:

County of Sussex

Contractor:

Tony’s Concrete Construction Company; cost \$34,000

Construction Schedule:

Construction Start: April 17, 2017

Construction Completion: April 20, 2017

Traffic Impacts:

As of April 20, 2017 all temporary traffic control devices have been removed and permanent traffic signs installed.

Project Funding:

100% Sussex County Capital Funds

Construction Activities:

- Installation of Traffic Control Signs (MPT) - *Complete*
- Demolition of Existing median- *Complete*
- Construction of Curb- *Complete*
- Construction of Pedestrian Refuge- *Complete*
- Construction of Brick Paver Infill- *Complete*
- Restoration / Repair of roadway - *Complete*
- Roadway Striping – *To Be Completed*
- Installation of Signs - *Complete*
- Removal of MTP - *Complete*
- Final Punch List Items- *Complete*

For more information about this project please feel free to contact Robert Ayers of the Sussex County Division of Engineering at 973-579-0430 or email at dpw@sussex.nj.us



Removal of Existing Median and Installation of Concrete Curb Formwork



Installation of Brick Paver Infill



CR 613 Plaza with Completed Median

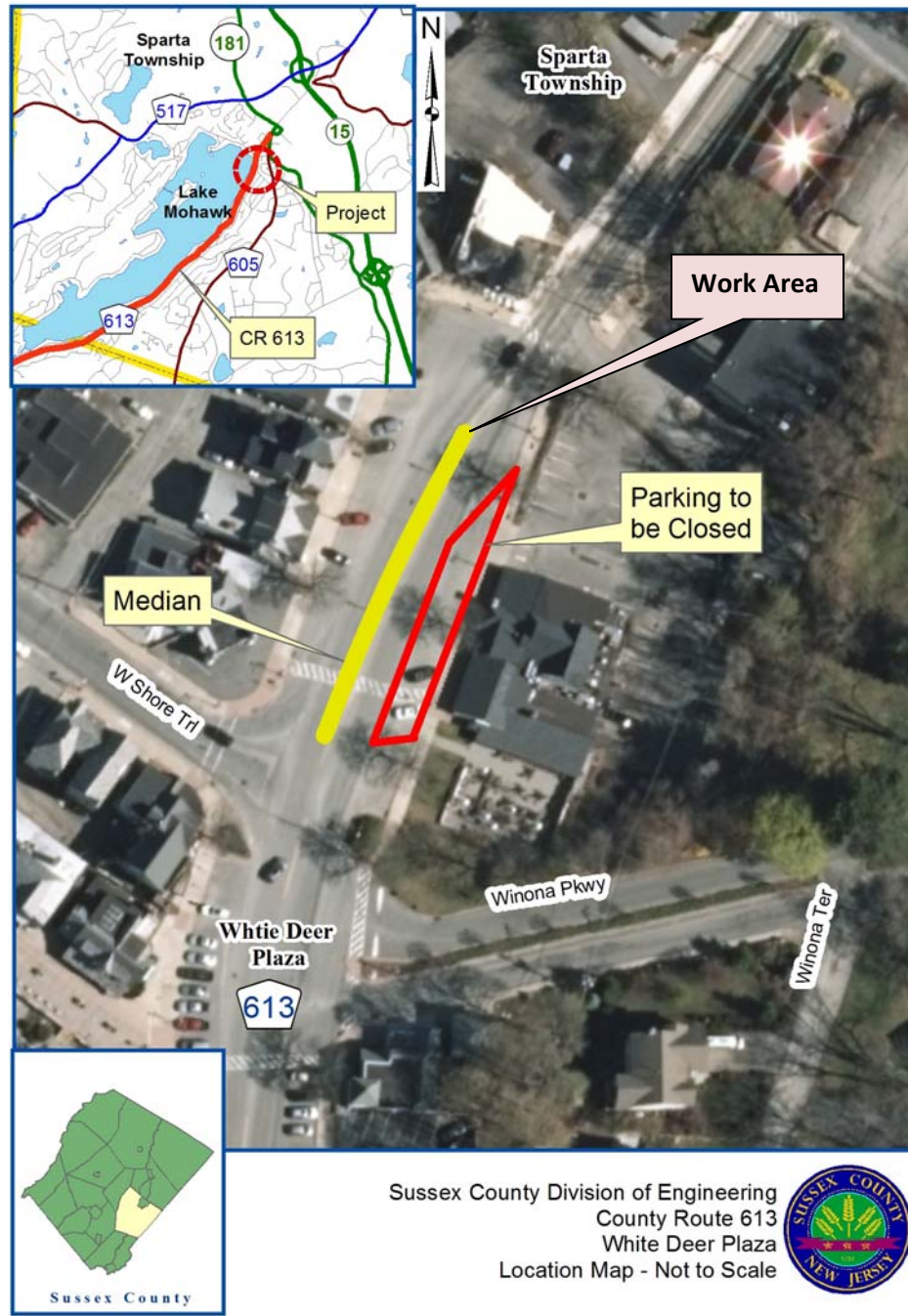


DEPARTMENT OF ENGINEERING AND PLANNING
 Division of Engineering
 One Spring Street
 Newton, New Jersey 07860
 973-579-0430
 dpw@sussex.nj.us
 Matthew R. Sinke, P.E.
 Division Director/Assistant County Engineer

Project Notice – CR 613 White Deer Plaza

Distributed: April 26, 2017

Location Map: CR 613 White Deer Plaza Median



Sussex County Division of Engineering
 County Route 613
 White Deer Plaza
 Location Map - Not to Scale

\\SUSSEX-DPW\Documents\Roads\613\MM_07_08\PROJECTS\1995 Plaza Sidewalks and Curb_Median Island\2016 MEDIAN\01 Corr\Notice\20170426_NTC_613 White Deer Plaza Project Completion.doc