



DEPARTMENT OF ENGINEERING AND PLANNING  
 Division of Engineering  
 One Spring Street  
 Newton, New Jersey 07860  
 973-579-0430  
 dpw@sussex.nj.us  
 Matthew R. Sinke, P.E.  
 Division Director/Assistant County Engineer

**Project Notice – CR 613 White Deer Plaza**

**Distributed: April 13, 2017**

**Project:**

Replacement of the CR 613 median island located in the White Deer Plaza, Lake Mohawk in Sparta Twp.

**Designer:**

County of Sussex

**Contractor:**

Tony's Concrete Construction Company; cost \$34,000

**Construction Schedule:**

**Construction Start:** April 17, 2017  
**Estimated Duration:** 5 days

**Traffic Impacts:**

Work is expected to be conducted under alternating single lane two-way flagger controlled traffic when needed and under lane shifts during other periods. Users should expect delays. See Map for parking closures.

**Project Funding:**

100% Sussex County Capital Funds

**Construction Activities:**

- Installation of Traffic Control Signs (MPT)
- Closure of select on-street Parking (see map)
- Demolition of Existing median
- Construction of Curb
- Construction of Pedestrian Refuge
- Construction of Brick Paver Infill
- Restoration / Repair of roadway
- Roadway Striping
- Installation of Signs
- Removal of MTP
- Final Punch List Items

*For more information about this project please feel free to contact Robert Ayers of the Sussex County Division of Engineering at 973-579-0430 or email at [dpw@sussex.nj.us](mailto:dpw@sussex.nj.us)*



CR 613 Plaza Looking South



CR 613 Plaza Looking North



CR 613 Plaza Looking North  
 Note Parking to be Closed on right

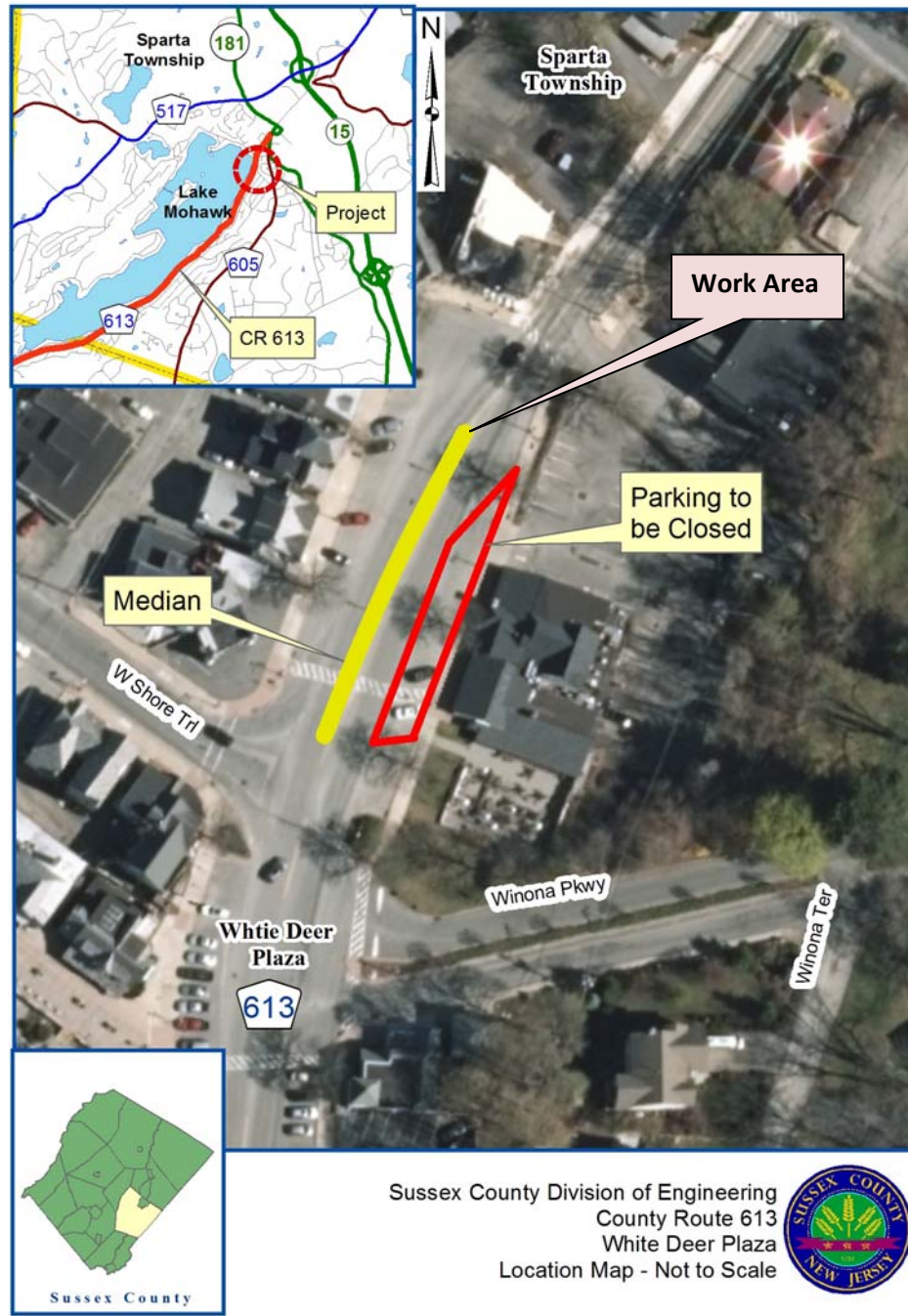


DEPARTMENT OF ENGINEERING AND PLANNING  
 Division of Engineering  
 One Spring Street  
 Newton, New Jersey 07860  
 973-579-0430  
 dpw@sussex.nj.us  
 Matthew R. Sinke, P.E.  
 Division Director/Assistant County Engineer

**Project Notice – CR 613 White Deer Plaza**

**Distributed: April 13, 2017**

**Location Map: CR 613 White Deer Plaza Median**



Sussex County Division of Engineering  
 County Route 613  
 White Deer Plaza  
 Location Map - Not to Scale

X:\Roads\613\MM\_07\_08\PROJECTS\1995 Plaza Sidewalks and Curb\_Median Island\2016 MEDIAN\01 Corr\Notice\20170413\_NTC\_613 White Deer Plaza Project Update.doc