



DEPARTMENT OF ENGINEERING AND PLANNING
Division of Engineering
One Spring Street
Newton, New Jersey 07860
973-579-0430
dpw@sussex.nj.us
Matthew R. Sinke, P.E.
Division Director/Assistant County Engineer

Public Notice: Bridge Q-06 Imminent 10-Ton Weight Posting Distributed: Feb. 8, 2017

Municipality:

Sparta Township

Facility:

Bridge Q-06 - TO BE WEIGHT POSTED AT 10 TONS

Carrying Main Street over Wallkill River

Advisory:

During an inspection of Bridge Q-06 by Sussex County's On-Call Engineering Consultant, Genesis Engineering, significant deterioration was observed in the concrete encased steel beams that carry the roadway. Based upon the observed deterioration, Genesis Engineering performed a load rating calculation to determine the safe load carrying capacity of the bridge.

The results of these calculations indicated that in its current condition, the concrete encased steel beam superstructure does not have sufficient load carrying capacity to allow all legal vehicles (i.e. heavier traffic) to safely traverse the bridge.

Therefore, in the interest of public safety, Bridge Q-06 is to be load posted (i.e. weight restricted) in accordance with the above.

Actions To Be Taken:

- NJ One Call utility mark out prior to sign installation
- Expedited sign fabrication and installation by Sussex County Office of Bridge & Traffic Safety in-house forces.
- **10 TON BRIDGE WEIGHT POSTING: On or about, Tuesday, February 14, 2017**, Bridge Q-06 on Main Street will be weight posted (i.e. weight restricted) to 10 Tons. Signs will be placed at all major intersections with Main Street and on both approaches to Bridge Q-06 along Main Street to advise motorists.

Follow Up Actions:

The Design of the Replacement of Bridge Q-06 has been awarded to Keller & Kirkpatrick, Inc. of Morris Plans, NJ. The replacement of this bridge is preliminarily scheduled for summer / fall 2019.

Contact Information:

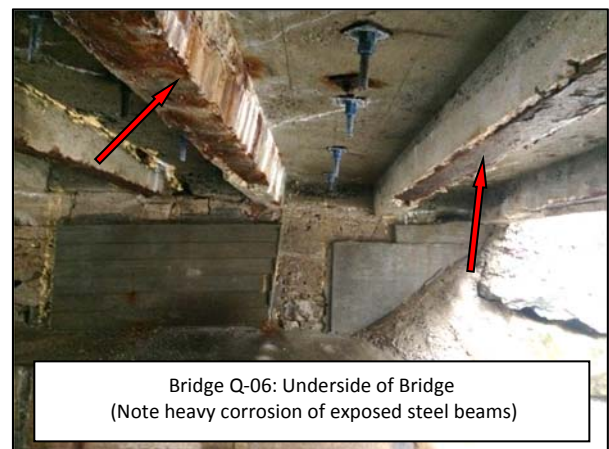
For more information about this bridge please contact Matt Sinke, Assistant County Engineer, of the Sussex County Division of Engineering at 973-579-0430 or dpw@sussex.nj.us.



Bridge Q-06: View of Upstream Headwall



Bridge Q-06: Roadway View of Main Street Looking North



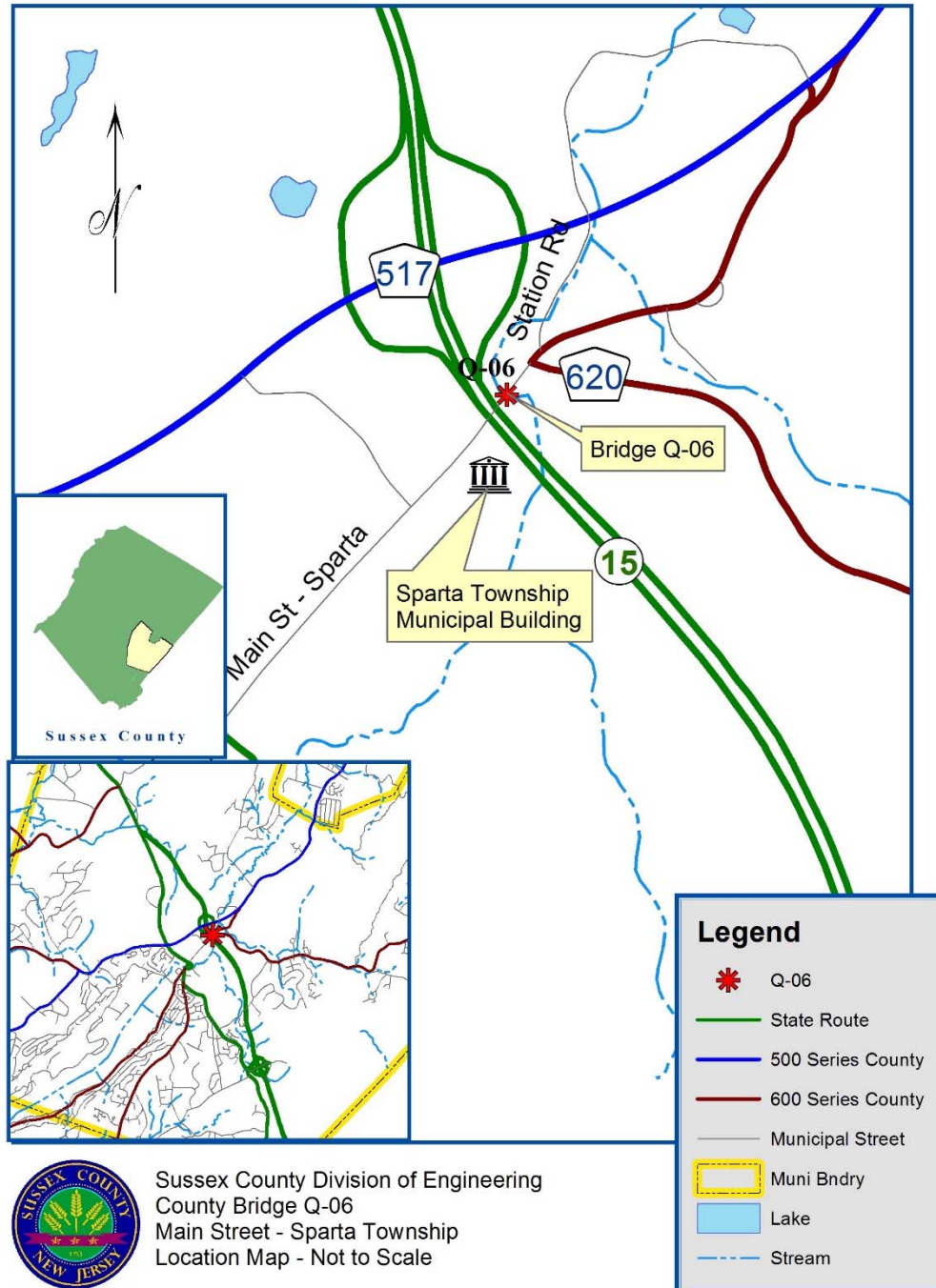
Bridge Q-06: Underside of Bridge
(Note heavy corrosion of exposed steel beams)



DEPARTMENT OF ENGINEERING AND PLANNING
 Division of Engineering
 One Spring Street
 Newton, New Jersey 07860
 973-579-0430
dpw@sussex.nj.us
 Matthew R. Sinke, P.E.
 Division Director/Assistant County Engineer

Public Notice: Bridge Q-06 Imminent 10-Ton Weight Posting Distributed: Feb. 8, 2017

Bridge Q-06 Main Street: Location Map



Sussex County Division of Engineering
 County Bridge Q-06
 Main Street - Sparta Township
 Location Map - Not to Scale