



DEPARTMENT OF ENGINEERING AND PLANNING
Division of Engineering
One Spring Street
Newton, New Jersey 07860
973-579-0430
dpw@sussex.nj.us
William J. Koppenaar, P.E.
Division Director/Assistant County Engineer

Construction Notice – Scour Repairs at Bridge S-16 **Distributed: April 8, 2016**

Project:

Repair of Bridge S-16

Stillwater Road, Stillwater Township

Construction Forces:

- Sussex County Office of Bridge & Traffic Safety

Schedule:

- Work is scheduled to begin on or about **Monday, April 11**, pending favorable Stream Flow Conditions (i.e. the stream flow remains low enough to work).
- Anticipated duration of work is Approximately 1-2 weeks

Traffic Control:

- Work will take place primarily along the shoulder of the roadway, with advanced warning signage in place during construction operations.
- Single-lane flagging operations will be utilized as necessary during construction activities that require a portion of Stillwater Road to be occupied.

Construction Activities:

Repairs to Sussex County Bridge S-16 are necessary as a result of scour (i.e. erosion of the stream channel around the bridge) sustained during Hurricane Irene and Tropical Storm Lee.

Scour Repairs will involve installation of stone armoring adjacent to the bridge structure that provides for the following:

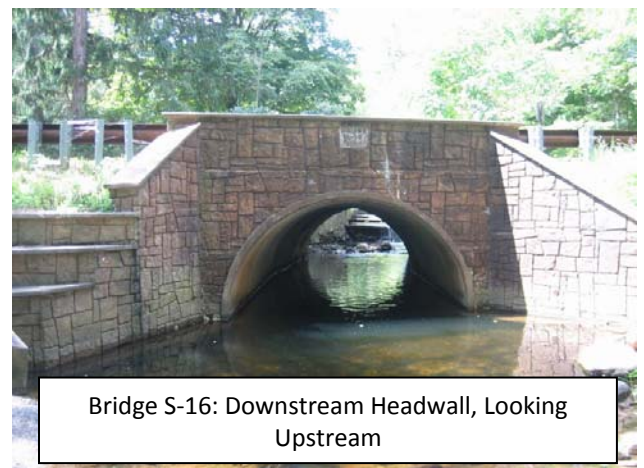
- Fills holes / replaces stream channel material scoured (i.e. washed away) during prior storm events.
- Prevents scour during future storm events.

Contact Information:

For more information about this project please feel free to contact Matt Sinke, Supervising Engineer, of the Sussex County Division of Engineering at 973-579-0430 or dpw@sussex.nj.us



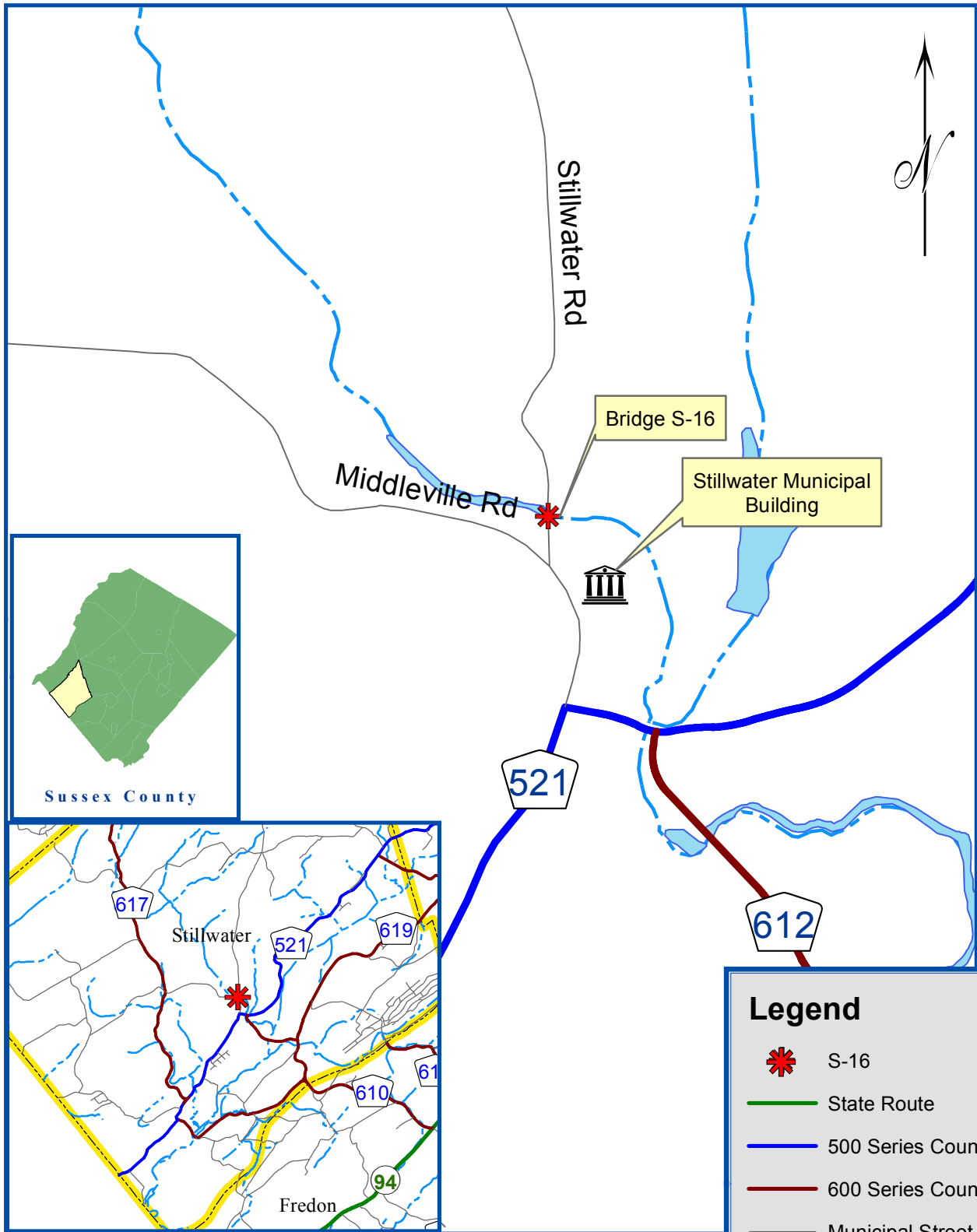
Bridge S-16: Looking North along Stillwater Road



Bridge S-16: Downstream Headwall, Looking Upstream



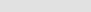
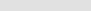
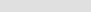





Bridge S-16: Upstream Headwall, Looking Downstream



Sussex County Division of Engineering
 County Bridge S-16
 Stillwater Road - Stillwater Township
 Location Map - Not to Scale

Legend

-  S-16
-  State Route
-  500 Series County
-  600 Series County
-  Municipal Street
-  Muni Bndry
-  Lake
-  Stream