



DEPARTMENT OF ENGINEERING AND PLANNING
 Division of Engineering
 One Spring Street
 Newton, New Jersey 07860
 973-579-0430
dpw@sussex.nj.us
 William J. Koppenaar, P.E.
 Division Director/Assistant County Engineer

Project Design Notice – Bridge O-07 Replacement Distributed: October 8, 2015

Project:

**Replacement of Bridge O-07
 Passaic Avenue, Borough of Ogdensburg**

Bridge O-07 is a 47-foot long single span concrete encase steel girder bridge on Passaic Avenue over Wallkill River in Ogdensburg Borough, built in 1928. The bridge is structurally deficient due to the poor condition of the superstructure and functionally obsolete due to the substandard deck geometry and requires replacement. The bridge has been reduced to a single lane of traffic due to significant deterioration to the bridge fascia.

The County proposes replacing the existing structure with a new steel stringer superstructure on a steel sheeting substructure with concrete cladding. The bridge will be widened to a 28-foot width. An open bar railing will be used with concrete pylon ends.

Designer:

Keller & Kirkpatrick, Inc., of Morris Plains, NJ

Design Schedule

- ✓ Preliminary Design Spring 2015 – *Complete*
- ✓ Permits Summer 2015 – *Complete*
- ✓ Final Design Fall 2015 – *Complete*
- **Public Bid Advertising** **October 12, 2015**
- Construction Award December 9, 2015
- Bridge Construction Summer 2016

(Dates are preliminary and subject to change pending unforeseen circumstances)

Construction Funding:

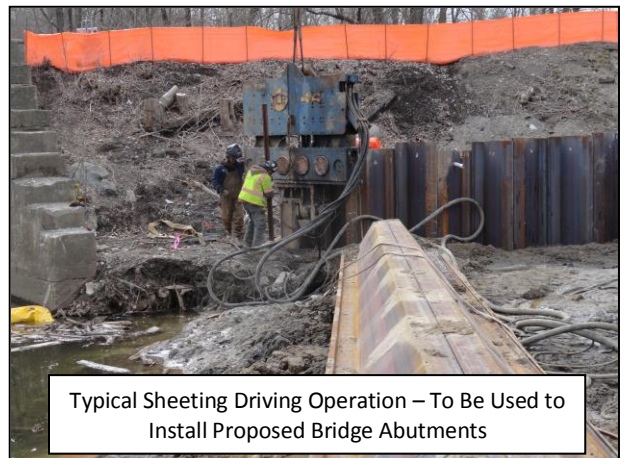
NJDOT 2013 LBFNP Primary	
Grant Application	\$1,000,000.00
2015/2016 County Capital	\$600,000.00
Total Estimated Construction Cost	\$1,600,000.00

Traffic Impacts:

Construction will require a full closure of Passaic Avenue at Bridge O-07, with a posted detour.



Bridge O-07: Bridge Fascia Deterioration Looking Downstream



Typical Sheeting Driving Operation – To Be Used to Install Proposed Bridge Abutments



Proposed Railing System – Picture of Similar Railing System. (Note: Proposed railing color, pylon end shape, and wingwall stone pattern may vary from shown.)

For more information about this project please feel free to contact Siân Pearson, at the Sussex County Division of Engineering at 973-579-0430 or dpw@sussex.nj.us



DEPARTMENT OF ENGINEERING AND PLANNING
 Division of Engineering
 One Spring Street
 Newton, New Jersey 07860
 973-579-0430
dpw@sussex.nj.us
 William J. Koppenaal, P.E.
 Division Director/Assistant County Engineer

Project Design Notice – Bridge O-07 Replacement Distributed: October 8, 2015

Bridge O-07: Location Map

