



DEPARTMENT OF ENGINEERING AND PLANNING
Division of Engineering
One Spring Street
Newton, New Jersey 07860
973-579-0430
dpw@sussex.nj.us
William J. Koppenaal, P.E.
Division Director/Assistant County Engineer

Project Notice – CR 607 Maxim Dr Wall Replacement

Distributed: July 24, 2015

Project:

Replacement of a 180-ft long retaining wall which supports County Route 607, a.k.a. Maxim Drive, along the frontage of 263-265 Maxim Drive.

Designer:

Genesis Engineering LLC, Lafayette, NJ

Contractor:

Awarded to Bob Viersma & Sons, Inc., of Allamuchy, NJ for \$413,129.75

Anticipated Construction Schedule:

Construction Start /

Road Closure: June 29, 2015

Construction Completion: Late Aug. - Early Sept.

Traffic Impacts:

CR 607 (Maxim Drive) is currently closed to traffic at the retaining wall along the frontage of 263-265 Maxim Drive. The road shall remain closed for the duration of the construction with a posted work zone and detour. Access to all driveways and adjoining roads will be maintained throughout construction.

Project Funding:

100% Sussex County Capital Funds

Construction Activities:

- ✓ Installation of Detour Signs - *Complete*
- ✓ Road Closure and Mobilization to Site - *Complete*
- ✓ Demolition of Existing Retaining Wall - *Complete*
- **Repairs / Upgrades to Existing Drainage System - *In Progress (50% Complete)***
- **Installation of New Modular Block Gravity Retaining Wall System - *In Progress (80% Complete)***
 - Backfill and Grade Roadway
 - Landscaping
 - Roadway Paving and Striping
 - Guide Rail Installation
 - Open Roadway to Traffic
 - Final Punch List Items



Rock Removal for Installation of Wall Foundation



Installation of Precast Modular Wall Unit (Block)



Compacting Backfill behind Retaining Wall Block

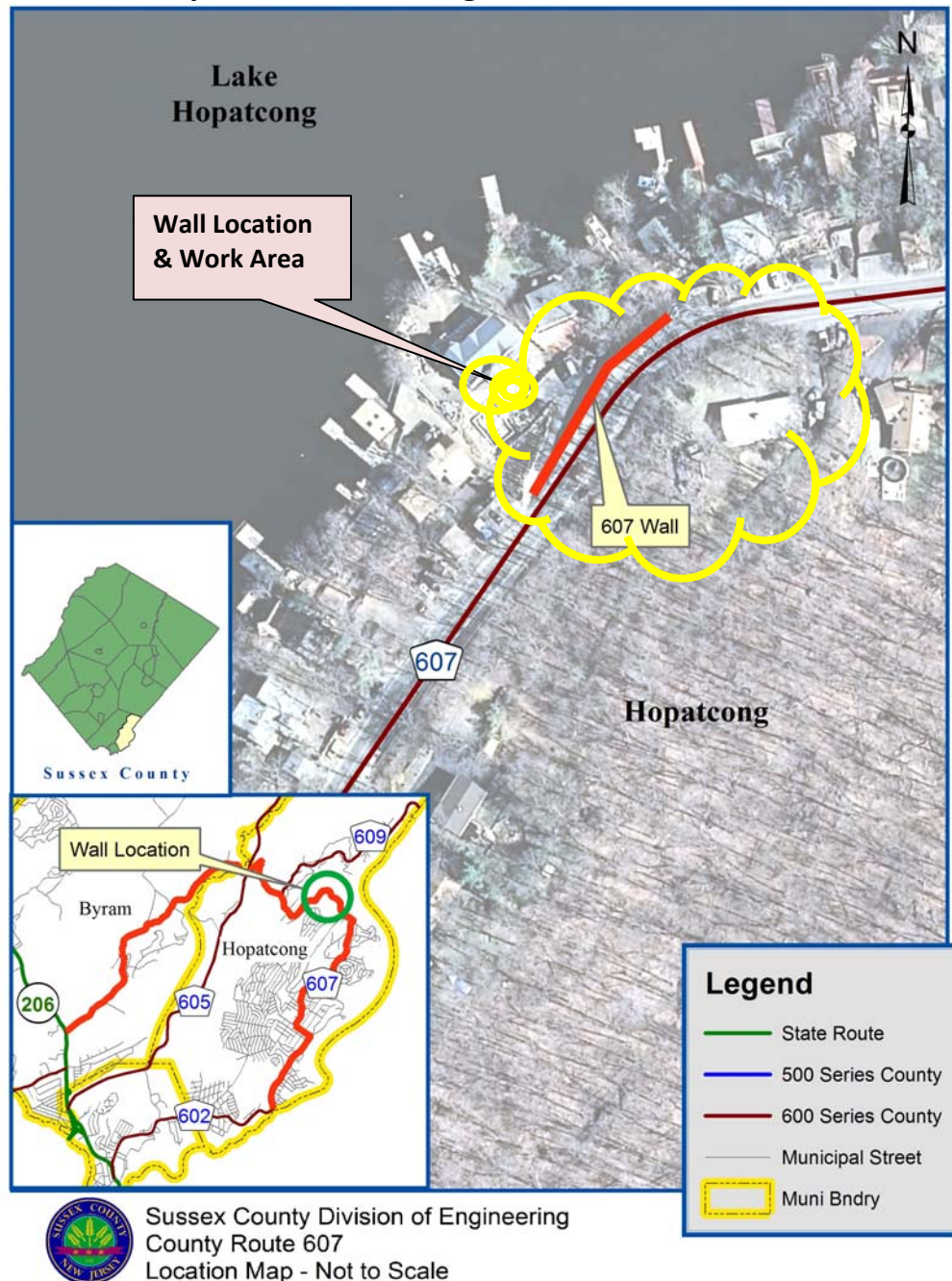
For more information about this project please feel free to contact Matt Sinke, Principal Engineer, of the Sussex County Division of Engineering at 973-579-0430 or email at dpw@sussex.nj.us



DEPARTMENT OF ENGINEERING AND PLANNING
Division of Engineering
One Spring Street
Newton, New Jersey 07860
973-579-0430
dpw@sussex.nj.us
William J. Koppenaal, P.E.
Division Director/Assistant County Engineer

Project Notice – CR 607 Maxim Dr Wall Replacement **Distributed: July 24, 2015**

Location Map: CR 607 Retaining Wall near 263-265 Maxim Drive

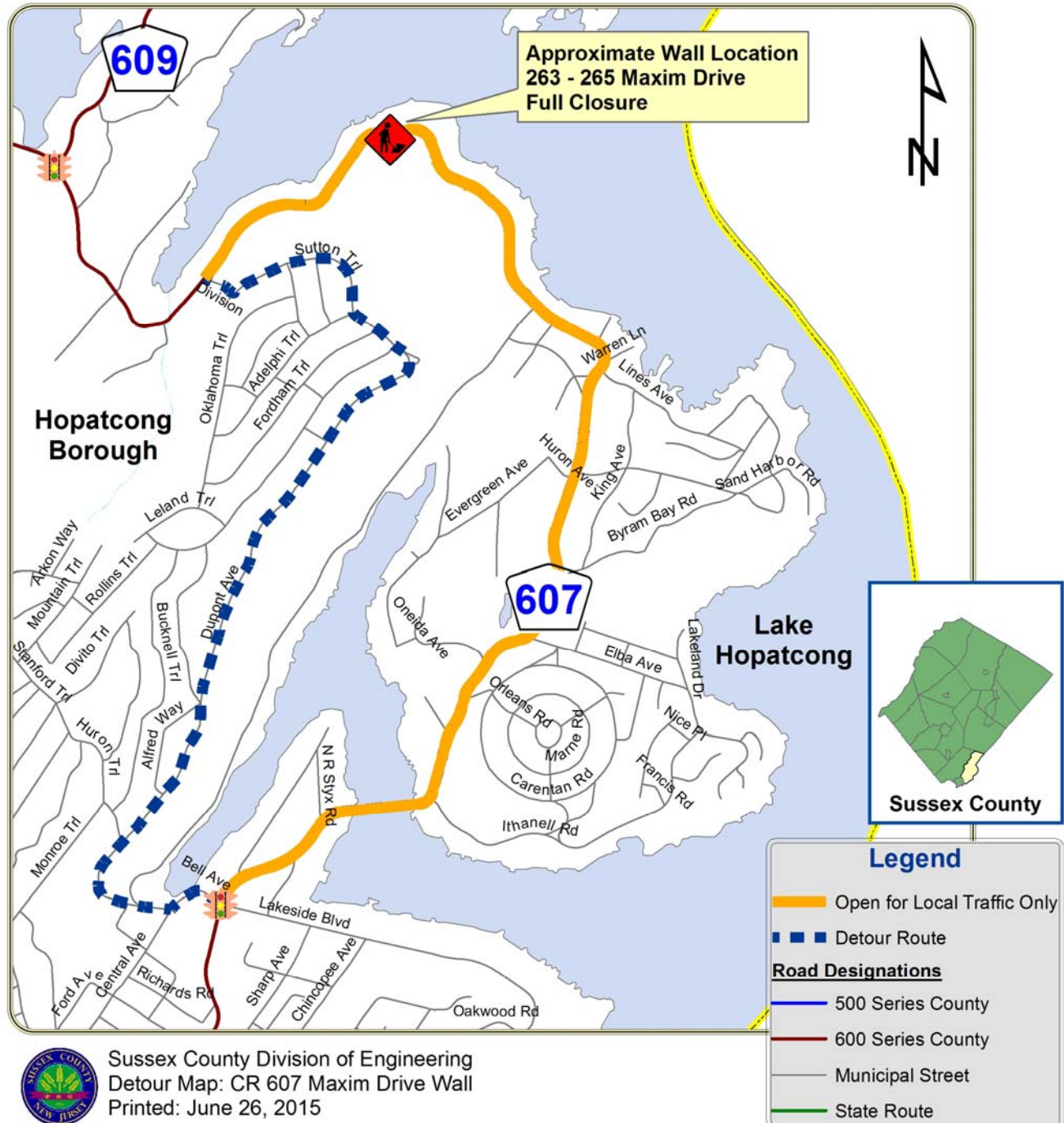




DEPARTMENT OF ENGINEERING AND PLANNING
Division of Engineering
One Spring Street
Newton, New Jersey 07860
973-579-0430
dpw@sussex.nj.us
William J. Koppenaal, P.E.
Division Director/Assistant County Engineer

Project Notice – CR 607 Maxim Dr Wall Replacement **Distributed: July 24, 2015**

Map: CR 607 Wall Replacement Detour & Closure



Sussex County Division of Engineering
Detour Map: CR 607 Maxim Drive Wall
Printed: June 26, 2015

\\SUSSEX-DPW\\Remote\\Construction\\CR 607 Maxim Drive Retaining Wall\\03 Const\\10 Corr\\20 Notices\\02 Pub Outreach\\01 Biweekly letters etc\\20150724_NTC_607 Maxim Wall Construction Project Update.doc