



DEPARTMENT OF ENGINEERING AND PLANNING
 Division of Engineering
 One Spring Street
 Newton, New Jersey 07860
 973-579-0430
dpw@sussex.nj.us
 William J. Koppenaar, P.E.
 Division Director/Assistant County Engineer

Public Notice: Bridge D-44 Closure

Distributed: July 10, 2015

Municipality:

Township of Frankford

Facility:

Bridge D-44- TO BE CLOSED

Carrying CR 637, a.k.a. Beemer Church Road
 Over a Branch of Papakating Creek

Advisory:

On July 9 Sussex County Division of Engineering Staff performed a detailed follow-up inspection of the previously identified undermining of the Bridge D-44 footings under the southbound lane.

This inspection revealed extensive undermining of the bridge footings. (i.e. the stream has removed soil from under the bridge foundations).

In the interest of public safety, Bridge D-44 will be closed pending completion of emergency repairs by the Sussex County Office of Bridge and Traffic Safety and Division of Public Works.

Actions To Be Taken:

- **BRIDGE CLOSURE: On or About Monday, July 13, 2015** Bridge D-44 on County Route 637 (a.k.a. Beemer Church Road) will be closed and detour signage installed (see attached detour map for information).

Follow Up Actions:

In an effort to stabilize Bridge D-44 and reopen CR-637 to vehicular traffic prior to the start of the 2015-2016 school year, the Sussex County Division of Engineering will prepare the engineering design required for in-house forces to carry out repairs to the structure.

Pending unanticipated operational needs or adverse weather conditions, in-house forces are expected to mobilize to the site and begin repair work within the next few weeks.

Contact Information:

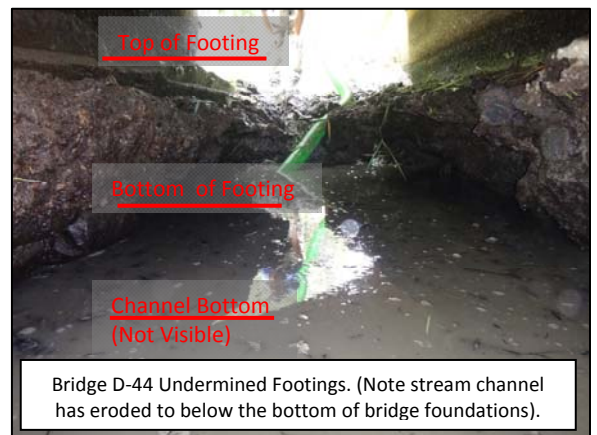
For more information about this project please feel free to contact Matt Sinke, Principal Engineer, of the Sussex County Division of Engineering at 973-579-0430 or dpw@sussex.nj.us.



Bridge D-44, looking SB along CR-637
 Note SB lane currently closed due to previously observed damage.



Sussex County Office of Bridge & Traffic Safety Forces performing follow-up investigation of Bridge D-44 footings.



Bridge D-44 Undermined Footings. (Note stream channel has eroded to below the bottom of bridge foundations).



DEPARTMENT OF ENGINEERING AND PLANNING
 Division of Engineering
 One Spring Street
 Newton, New Jersey 07860
 973-579-0430
dpw@sussex.nj.us
 William J. Koppenaal, P.E.
 Division Director/Assistant County Engineer

Public Notice: Bridge D-44 Closure

Distributed: July 10, 2015

Detour Map: Bridge D-44 Closure on CR-637 a.k.a. Beemer Church Road

