



DEPARTMENT OF ENGINEERING AND PLANNING
 Division of Engineering
 One Spring Street
 Newton, New Jersey 07860
 973-579-0430
dpw@sussex.nj.us
 William J. Koppenaar, P.E.
 Division Director/Assistant County Engineer

Public Notice

Distributed: May 29, 2015

Municipality:

Township of Frankford

Facility:

Bridge D-44

Carrying CR 637, a.k.a. Beemer Church Rd over a Branch of Papakating Creek

Advisory:

During an on-site inspection of Bridge D-44 by the Sussex County Department of Engineering and Planning localized undermining of the bridge footing (foundation) was observed. This undermining has destabilized the adjacent roadway threatening the safe flow of traffic along the CR 637 SB lane. Efforts were immediately undertaken to implement a **Single Lane Closure** on the affected lane of CR 637. During the single lane closure traffic will be managed utilizing a traffic signal controlled two-way single-lane work zone. The lane will remain closed until such time as remedial measures capable of restoring safety to the CR 637 SB Lane have been designed and constructed.

Actions Taken:

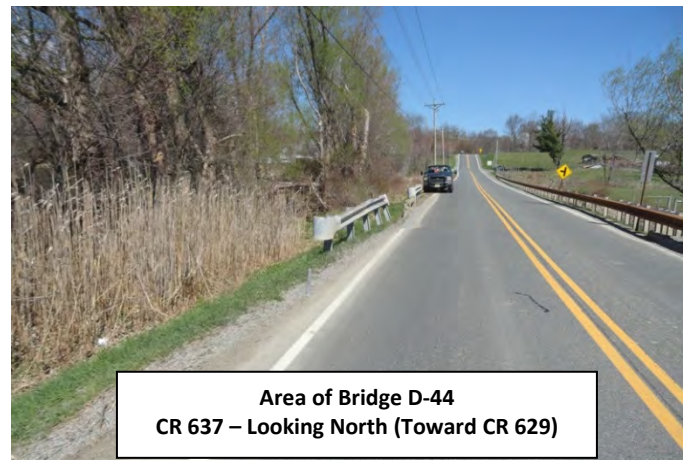
- Friday May 29, 2015: Closure of CR 637 SB lane at Bridge D-44 and Deployment of Temporary Traffic Signals controlling the flow of traffic through the single lane closure.

Follow Up Actions:

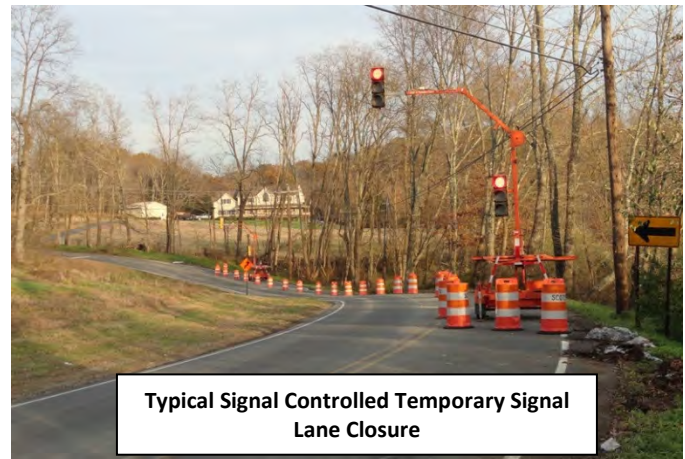
- Phase One: Investigate available measures capable of stabilizing the undermined footing, restoring stability to the adjacent roadway, and restoring operational safety to the facility sufficient to return the facility to service.
- Phase Two: Develop Documents needed to implement remedial measures.
- Phase Three: Implement remedial measures.



Area of Bridge D-44
 CR 637 – Looking South (Toward CR 565)



Area of Bridge D-44
 CR 637 – Looking North (Toward CR 629)



Typical Signal Controlled Temporary Signal Lane Closure

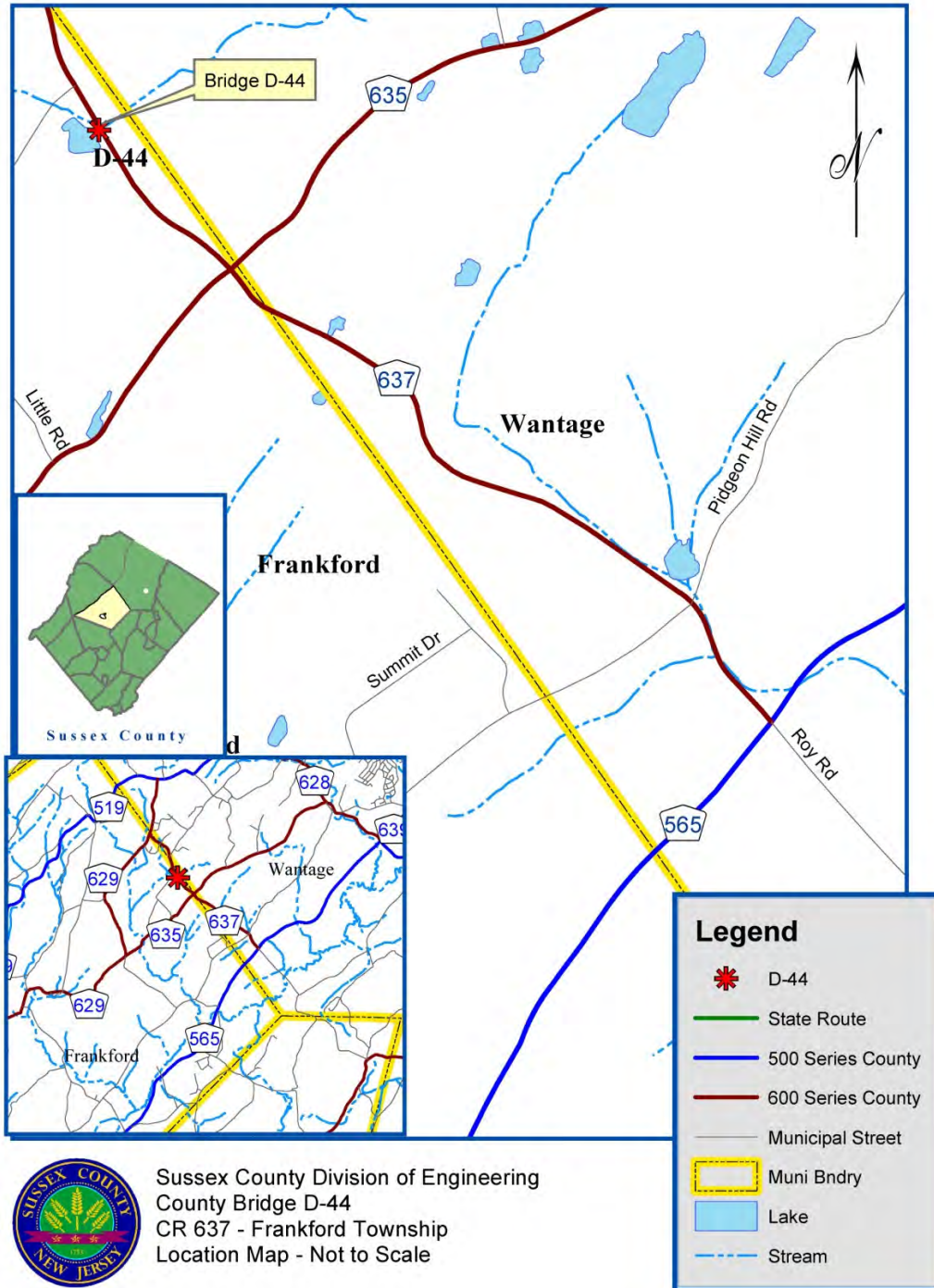


DEPARTMENT OF ENGINEERING AND PLANNING
 Division of Engineering
 One Spring Street
 Newton, New Jersey 07860
 973-579-0430
dpw@sussex.nj.us
 William J. Koppelaar, P.E.
 Division Director/Assistant County Engineer

Public Notice

Distributed: May 29, 2015

Location Map: Bridge D-44 Single Lane Closure CR 637 SB



Sussex County Division of Engineering
 County Bridge D-44
 CR 637 - Frankford Township
 Location Map - Not to Scale