



DEPARTMENT OF ENGINEERING AND PLANNING  
 Division of Engineering  
 One Spring Street  
 Newton, New Jersey 07860  
 973-579-0430  
 dpw@sussex.nj.us  
 William J. Koppenaar, P.E.  
 Division Director/Assistant County Engineer

**Project Notice – CR 607 Maxim Dr Wall Replacement**

**Updated: Feb 18, 2015**

**DESIGN NOTICE UPDATE**

**Project:**

Replacement of a 180-ft long retaining wall which supports County Route 607, a.k.a. Maxim Drive, along the frontage of 263-265 Maxim Drive.

Preliminary design efforts included evaluation of various replacement alternatives. Baseline objectives used to select the value engineered replacement wall system included: roadway safety, wall durability, wall service life, out-year maintenance needs, context sensitive system, minimizing local construction impacts and construction schedule, minimizing construction related traffic impacts, maximizing project cost-benefit.

**Designer:**

Genesis Engineering - \$104,980.00

**Schedule:**

- ✓ Design Alternatives and Preliminary Design Spring 2014
- **Final Design (at 95%) Feb 2015**
- **Utility Relocations Fall 2014 – Spring 2015**
  - ✓ JCP&L Complete
  - **Cablevision 95%**
  - **Verizon Not Started**
- Public Bidding March-April 2015
- Wall Construction Summer 2015  
 (Anticipated Construction Duration of up to 10 weeks)

**Traffic Impacts:**

Project will require a full closure of CR 607 at the wall location. A map of the proposed detour is included later in this notice.

**Project Funding:**

100% Sussex County Capital Funds

**Contact Information:**

For more information about this project please feel free to contact Matt Sinke, Principal Engineer, of the Sussex County Division of Engineering at 973-579-0430 or email at [dpw@sussex.nj.us](mailto:dpw@sussex.nj.us)



Picture of Existing Retaining Wall, CR 607 above.



Picture of CR 607 above Retaining Wall



Proposed Wall – Picture of Similar Wall System

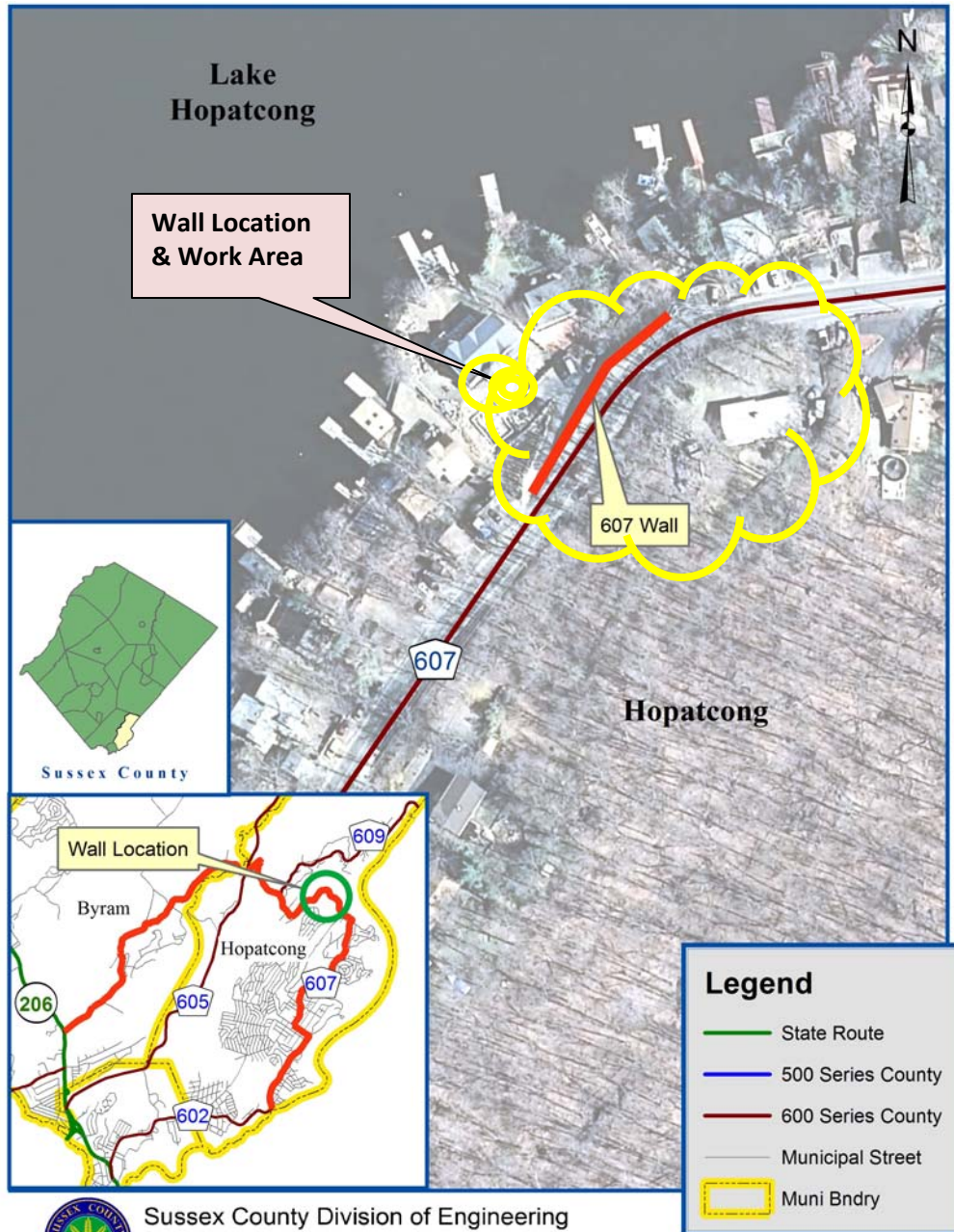


DEPARTMENT OF ENGINEERING AND PLANNING  
 Division of Engineering  
 One Spring Street  
 Newton, New Jersey 07860  
 973-579-0430  
 dpw@sussex.nj.us  
 William J. Koppenaar, P.E.  
 Division Director/Assistant County Engineer

**Project Notice – CR 607 Maxim Dr Wall Replacement**

**Updated: Feb 18, 2015**

**Location Map: CR 607 Retaining Wall near 263-265 Maxim Drive**



Sussex County Division of Engineering  
 County Route 607  
 Location Map - Not to Scale

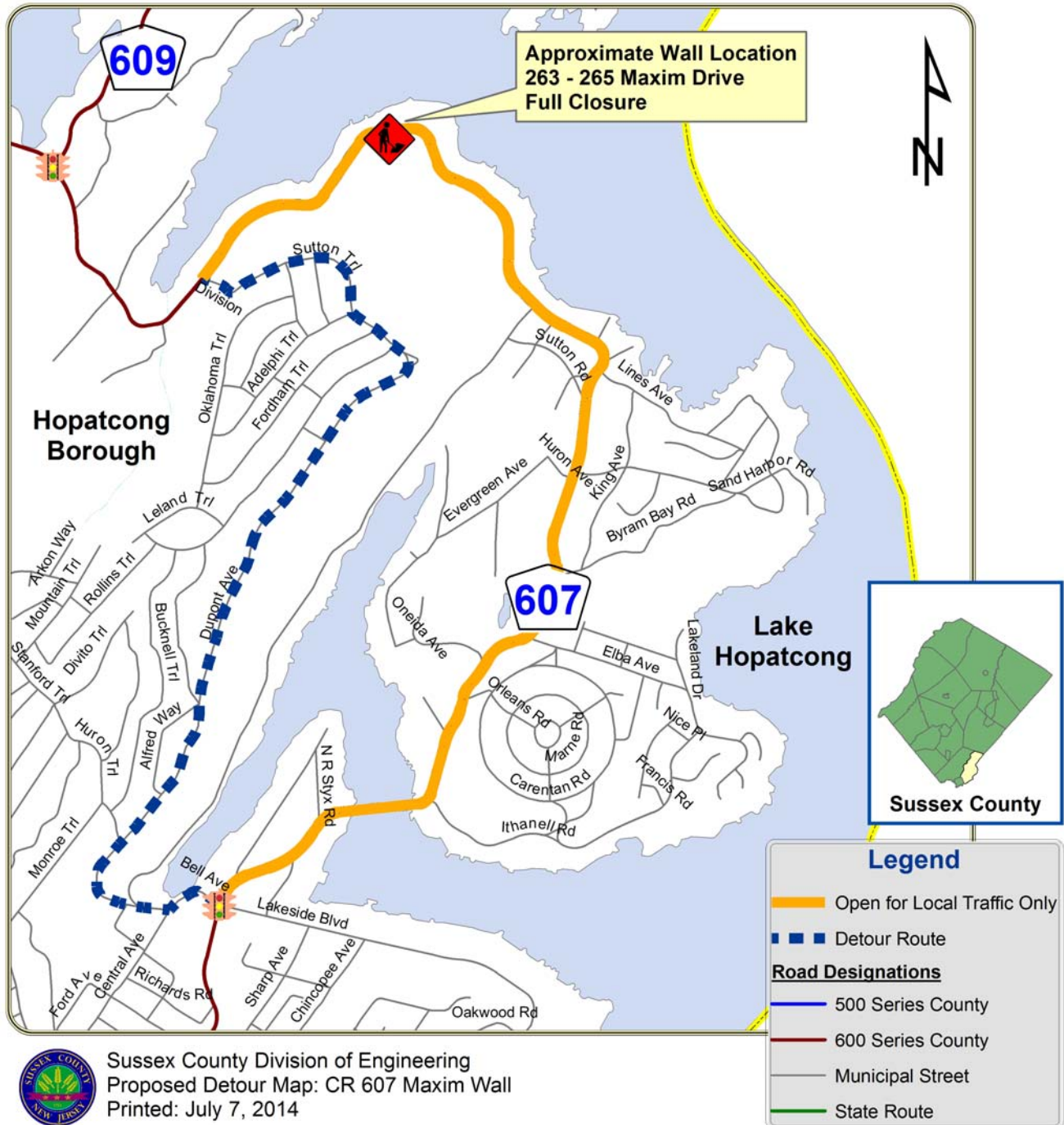


DEPARTMENT OF ENGINEERING AND PLANNING  
 Division of Engineering  
 One Spring Street  
 Newton, New Jersey 07860  
 973-579-0430  
 dpw@sussex.nj.us  
 William J. Koppelaar, P.E.  
 Division Director/Assistant County Engineer

**Project Notice – CR 607 Maxim Dr Wall Replacement**

**Updated: Feb 18, 2015**

**Map: CR 607 Wall Replacement Proposed Detour & Closure**



Sussex County Division of Engineering  
 Proposed Detour Map: CR 607 Maxim Wall  
 Printed: July 7, 2014

X:\Roads\607\06 Projects\263-265 Maxim Dr Retaining Wall\2013 Replacement\04 Design\10 Corr\20 Notices\05 Pub Outrch\20150218\_NTC\_607 Maxim Wall Design Project Update.doc