



DEPARTMENT OF ENGINEERING AND PLANNING
Division of Engineering
One Spring Street
Newton, New Jersey 07860
973-579-0430
dpw@sussex.nj.us
William J. Koppenaar, P.E.
Division Director/Assistant County Engineer

Project Notice – CR 607 Maxim Dr Wall Replacement

Updated: Jan 28, 2015

PROJECT NOTICE

Project:

Replacement of a 180-ft long retaining wall which supports County Route 607, a.k.a. Maxim Drive, along the frontage of 263-265 Maxim Drive.

Preliminary design efforts included evaluation of various replacement alternatives. Baseline objectives used to select the value engineered replacement wall system included: roadway safety, wall durability, wall service life, out-year maintenance needs, context sensitive system, minimizing local construction impacts and construction schedule, minimizing construction related traffic impacts, maximizing project cost-benefit.

Designer:

Genesis Engineering - \$104,980.00

Anticipated Schedule:

- ✓ Design Alternatives and Preliminary Design Spring 2014
 - **Final Design** **Feb 2015**
 - **Utility Relocations** **Fall 2014 – Spring 2015**
 - Public Bidding March 2015
 - Wall Construction Summer 2015
- (Anticipated Construction Duration 6 to 8 weeks)

Anticipated Traffic Impacts:

Project will require a full closure of CR 607 at the wall location warranting a temporary detour. A map of the proposed detour is included later in this notice.

Project Funding:

100% Sussex County Capital Funds

Contact Information:

For more information about this project please feel free to contact Bill Koppenaar, Chief Engineer, of the Sussex County Division of Engineering at 973-579-0430 or email at dpw@sussex.nj.us



Picture of Existing Retaining Wall, CR 607 above.



Picture of CR 607 above Retaining Wall

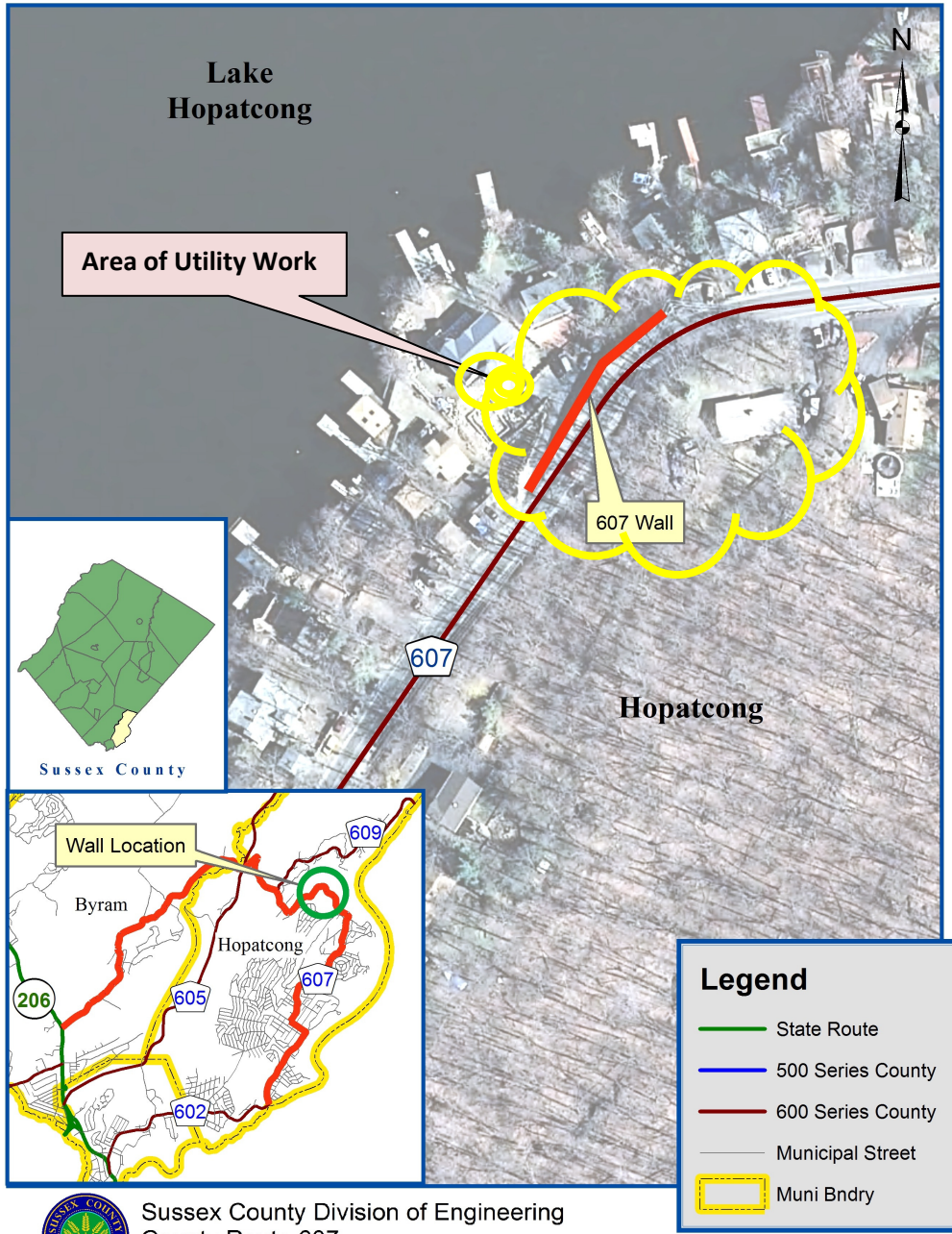


Proposed Wall – Picture of Similar Wall System



DEPARTMENT OF ENGINEERING AND PLANNING
 Division of Engineering
 One Spring Street
 Newton, New Jersey 07860
 973-579-0430
 dpw@sussex.nj.us
 William J. Koppelaar, P.E.
 Division Director/Assistant County Engineer

Project Notice – CR 607 Maxim Dr Wall Replacement **Updated: Jan 28, 2015**
Location Map: CR 607 Retaining Wall near 263-265 Maxim Drive



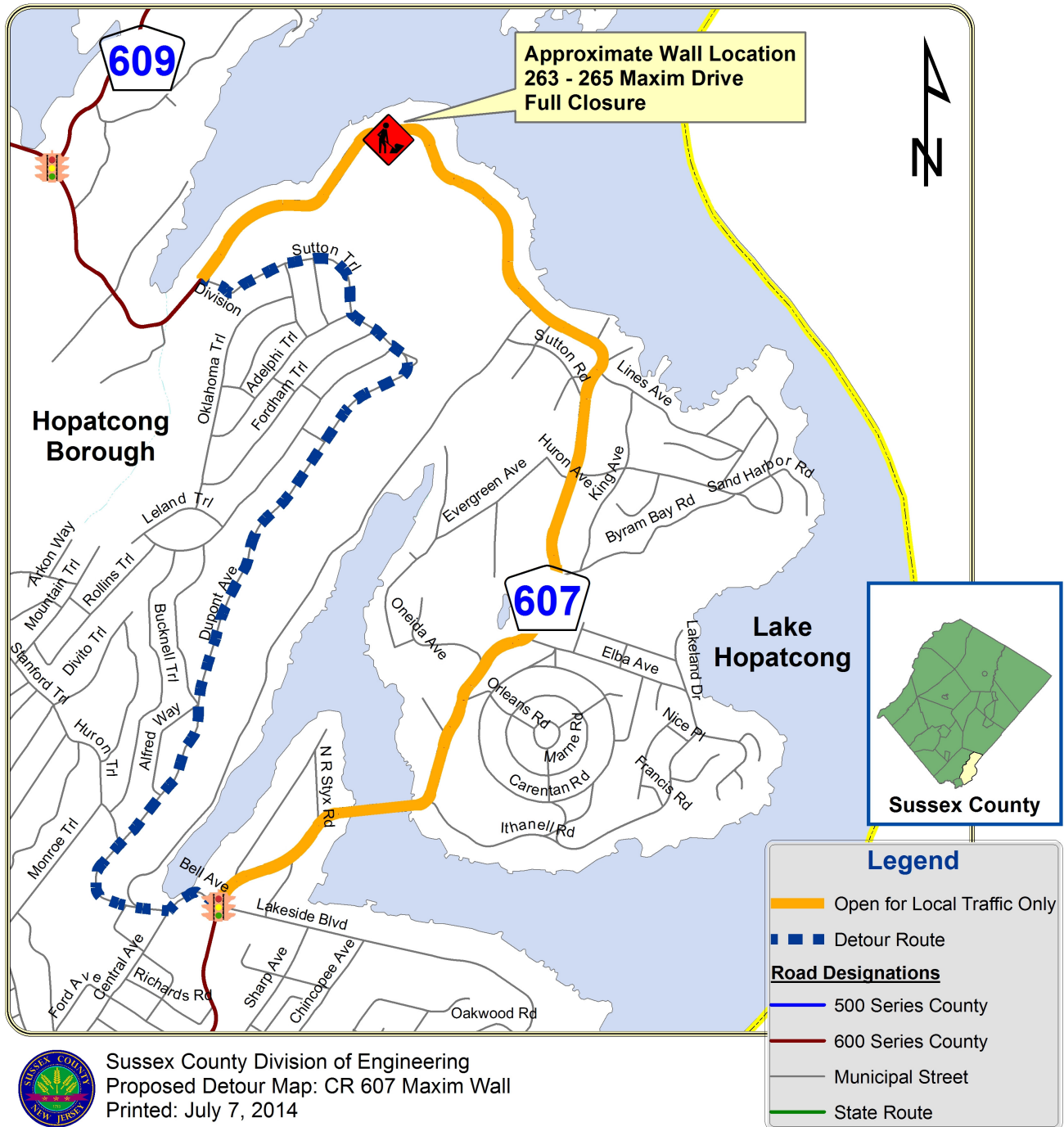
Sussex County Division of Engineering
 County Route 607
 Location Map - Not to Scale



DEPARTMENT OF ENGINEERING AND PLANNING
 Division of Engineering
 One Spring Street
 Newton, New Jersey 07860
 973-579-0430
 dpw@sussex.nj.us
 William J. Koppelaar, P.E.
 Division Director/Assistant County Engineer

Project Notice – CR 607 Maxim Dr Wall Replacement Updated: Jan 28, 2015

Map: CR 607 Wall Replacement Proposed Daily Detour & Closure



Sussex County Division of Engineering
 Proposed Detour Map: CR 607 Maxim Wall
 Printed: July 7, 2014

X:\Roads\607\06 Projects\263-265 Maxim Dr Retaining Wall\2013 Replacement\04 Design\10 Corr\20 Notices\05 Pub Outrch\20140701_NTC_607 Maxim Wall Design Project Update.doc