



DEPARTMENT OF ENGINEERING AND PLANNING
Division of Engineering
One Spring Street
Newton, New Jersey 07860
973-579-0430
dpw@sussex.nj.us
John C. Risko, P.E., P.L.S., P.P.
Division Director/Assistant County Engineer

Construction Notice – Bridge S-28 Replacement

Distributed: August 19, 2014

Project:

Replacement of Bridge S-28
Old Tannery Road, Stillwater Township

Contractor:

Salmon Bros., Inc. - \$319,429.50

Schedule:

Anticipated Schedule is as follows:

- Construction Start - **August 19, 2014**
- Anticipated Construction Duration - 4 Months

Old Tannery Road Closure:

Old Tannery Road is currently closed at Bridge S-28 and will remain closed for the duration of construction.

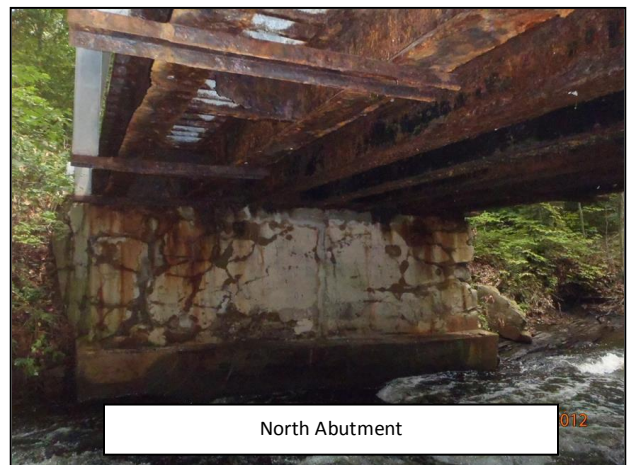
Construction Activities:

Bridge S-28

- Mobilization to Site – **In Progress**
- Manufacture of Precast Rigid Frame
- Remove Existing Structure
- Install New Concrete Footings
- Install Precast Rigid Frame
- Install New Concrete Wingwalls and Headwalls
- Backfill and Grade Roadway
- Final Paving and Landscaping
- Guiderail Installation
- Open Roadway to Traffic
- Final Punch List Items

Contact Information:

For more information about this project please feel free to contact Siân Pearson, Assistant Engineer, of the Sussex County Division of Engineering at 973-579-0430 or dpw@sussex.nj.us

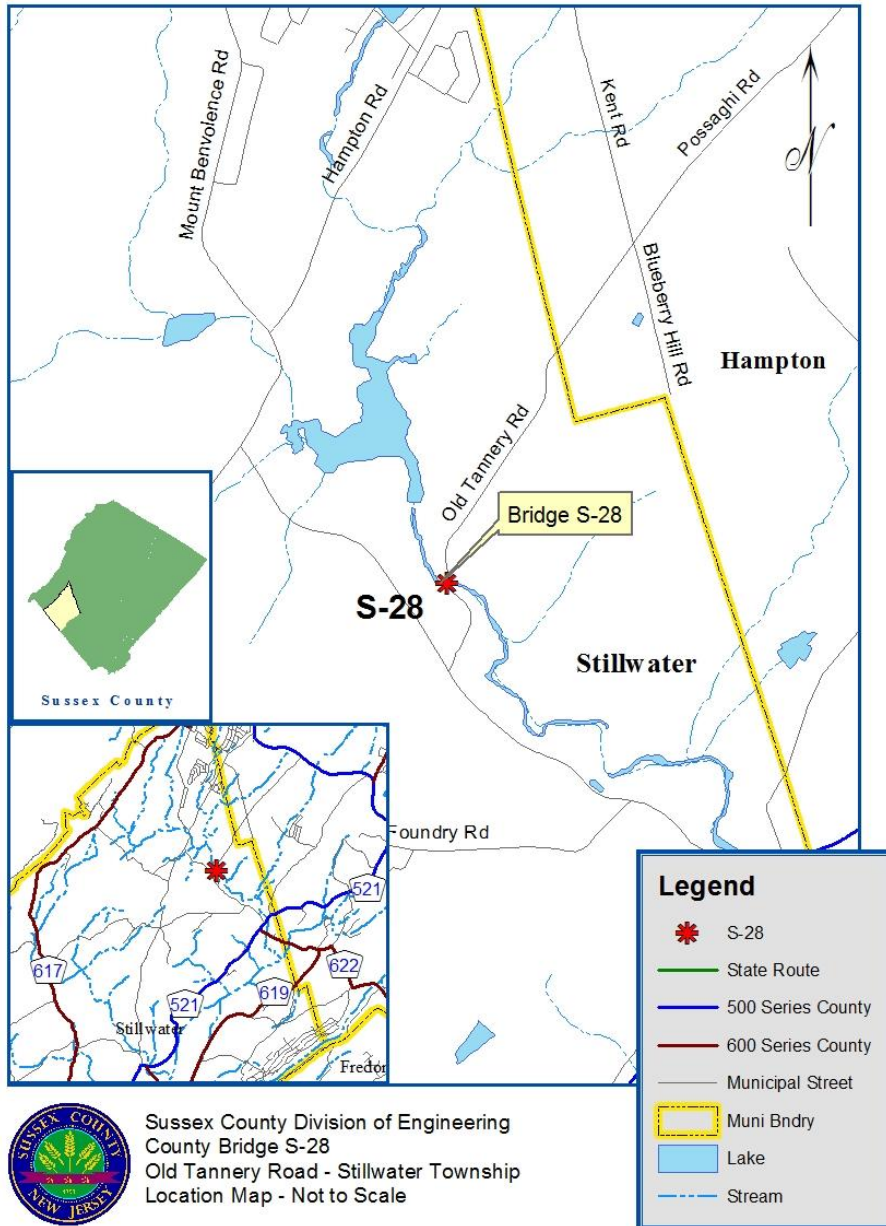





DEPARTMENT OF ENGINEERING AND PLANNING
 Division of Engineering
 One Spring Street
 Newton, New Jersey 07860
 973-579-0430
dpw@sussex.nj.us
 John C. Risko, P.E., P.L.S., P.P.
 Division Director/Assistant County Engineer

Construction Notice – Bridge S-28 Replacement **Distributed: August 19, 2014**

Bridge S-28 Old Tannery Road: Location Map



 Sussex County Division of Engineering
 County Bridge S-28
 Old Tannery Road - Stillwater Township
 Location Map - Not to Scale