



2014 Sussex County Crack Sealing Program **Distributed: July 28, 2014**

PROJECT UPDATE NOTICE

Project:

Asphalt wearing surface Crack Sealing is a core component of the Sussex County pavement maintenance program. Crack Sealing extends the useful service life of a roadway by limiting the infiltration of water into the pavement structure. Work locations are selected based upon an evaluation of pavement conditions, traffic volumes, and in coordination with other roadway maintenance activities.

Work Schedule:

Normal Work Hours: 7:00 a.m. to 3:30 p.m.

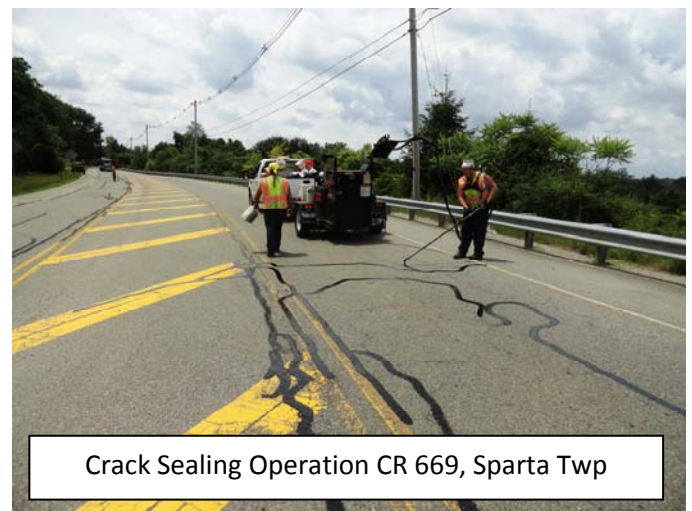
Work began on Tuesday May 27, 2014



Crack Sealing Operation CR 616, Andover Twp

County Route Segments Programmed in Work Queue:

- ✓ CR 517 Andover Sparta Rd - *Complete*
- **CR 517 Newton Sparta Rd**
 - CR 517 Sparta Munsons Corner Rd
- ✓ CR 521 Stillwater Rd - *Complete*
- CR 560 Tuttle's Corner Dingman's Rd
- ✓ CR 565 Lewisburg Creamery Rd - *Complete*
- ✓ CR 565 Glenwood Rd - *Complete*
- ✓ CR 604 Waterloo Rd - *Complete*
- ✓ CR 616 Newton Sparta Rd - *Complete*
- ✓ CR 623 Sunset Inn Rd - *Complete*
- ✓ CR 626 Halsey Rd - *Complete*
- ✓ CR 628 Branchville Lewisburg Rd - *Complete*
- ✓ CR 629 Wykertown Rd - *Complete*
- ✓ CR 669 Houses Corner Rd - *Complete*



Crack Sealing Operation CR 669, Sparta Twp

Contract & Funding:

- Contractor: Micro Pave Systems Inc.
- 100% Sussex County Capital Funds
- Approximate cost per foot of crack: \$0.42
- Miles of Road in 2014 Program: 40 +/-
- Total Program Budget: \$350,000

Traffic Impacts:

EXPECT DELAYS.

Work conducted under mobile single lane closure.

Contact Information:

For more information about this project please feel free to contact Elizabeth Awad, Assistant Engineer at the Sussex County Division of Engineering: 973-579-0430 or emails can be sent to dpw@sussex.nj.us



2014 Sussex County Crack Sealing Program

Distributed: July 28, 2014

Work Location Data:

