



DEPARTMENT OF ENGINEERING AND PLANNING  
Division of Engineering  
One Spring Street  
Newton, New Jersey 07860  
973-579-0430  
dpw@sussex.nj.us  
John C. Risko, P.E., P.L.S., P.P.  
Division Director/Assistant County Engineer

**Project Notice – CR 607 Maxim Dr Wall Replacement** **Distributed: July 07, 2014**

**PROJECT NOTICE**

**Project:**

Replacement of a 180-ft long retaining wall which supports County Route 607, a.k.a. Maxim Drive, along the frontage of 263-265 Maxim Drive.

Preliminary design efforts included evaluation of various replacement alternatives. Baseline objectives used to select the value engineered replacement wall system included: roadway safety, wall durability, wall service life, out-year maintenance needs, context sensitive system, minimizing local construction impacts and construction schedule, minimizing construction related traffic impacts, maximizing project cost-benefit.

**Designer:**

Genesis Engineering - \$104,980.00

**Anticipated Schedule:**

- ✓ Design Alternatives and Preliminary Design Spring 2014
  - **Final Design** July & August 2014
  - **Utility Relocations** Summer/Fall 2014
  - Public Bidding Fall 2014
  - Wall Construction Fall 2014
- (Anticipated Duration 6 to 8 weeks)

**Anticipated Traffic Impacts:**

Project will require a full closure of CR 607 at the wall location warranting a temporary detour. A map of the proposed detour is included later in this notice.

**Project Funding:**

100% Sussex County Capital Funds

**Contact Information:**

For more information about this project please feel free to contact Bill Koppenaal, Chief Engineer, of the Sussex County Division of Engineering at 973-579-0430 or email at [dpw@sussex.nj.us](mailto:dpw@sussex.nj.us)



Picture of Existing Retaining Wall, CR 607 above.



Picture of CR 607 above Retaining Wall

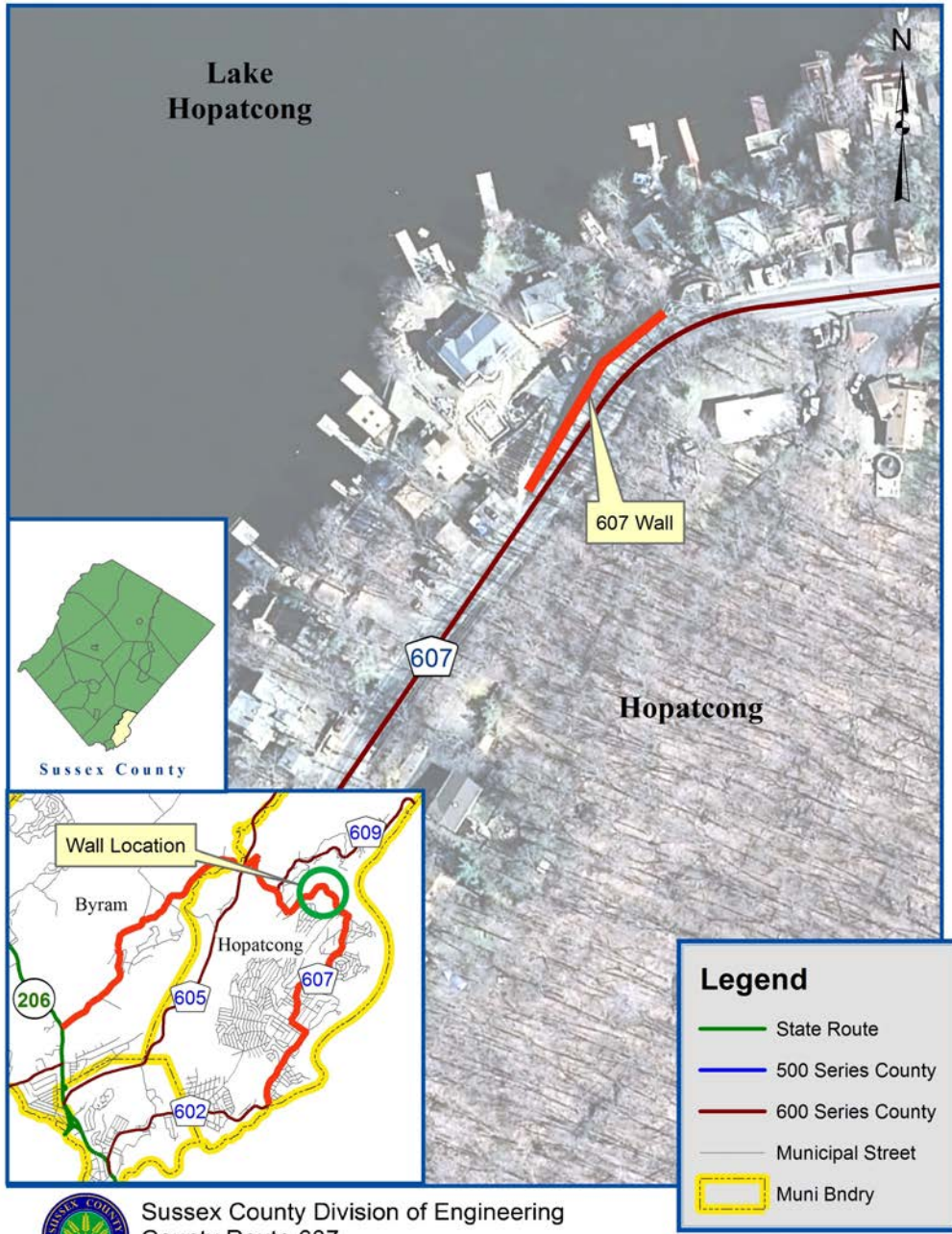


Proposed Wall – Picture of Similar Wall System



DEPARTMENT OF ENGINEERING AND PLANNING  
 Division of Engineering  
 One Spring Street  
 Newton, New Jersey 07860  
 973-579-0430  
 dpw@sussex.nj.us  
 John C. Risko, P.E., P.L.S., P.P.  
 Division Director/Assistant County Engineer

**Project Notice – CR 607 Maxim Dr Wall Replacement**      **Distributed: July 07, 2014**  
**Location Map: CR 607 Retaining Wall near 263-265 Maxim Drive**



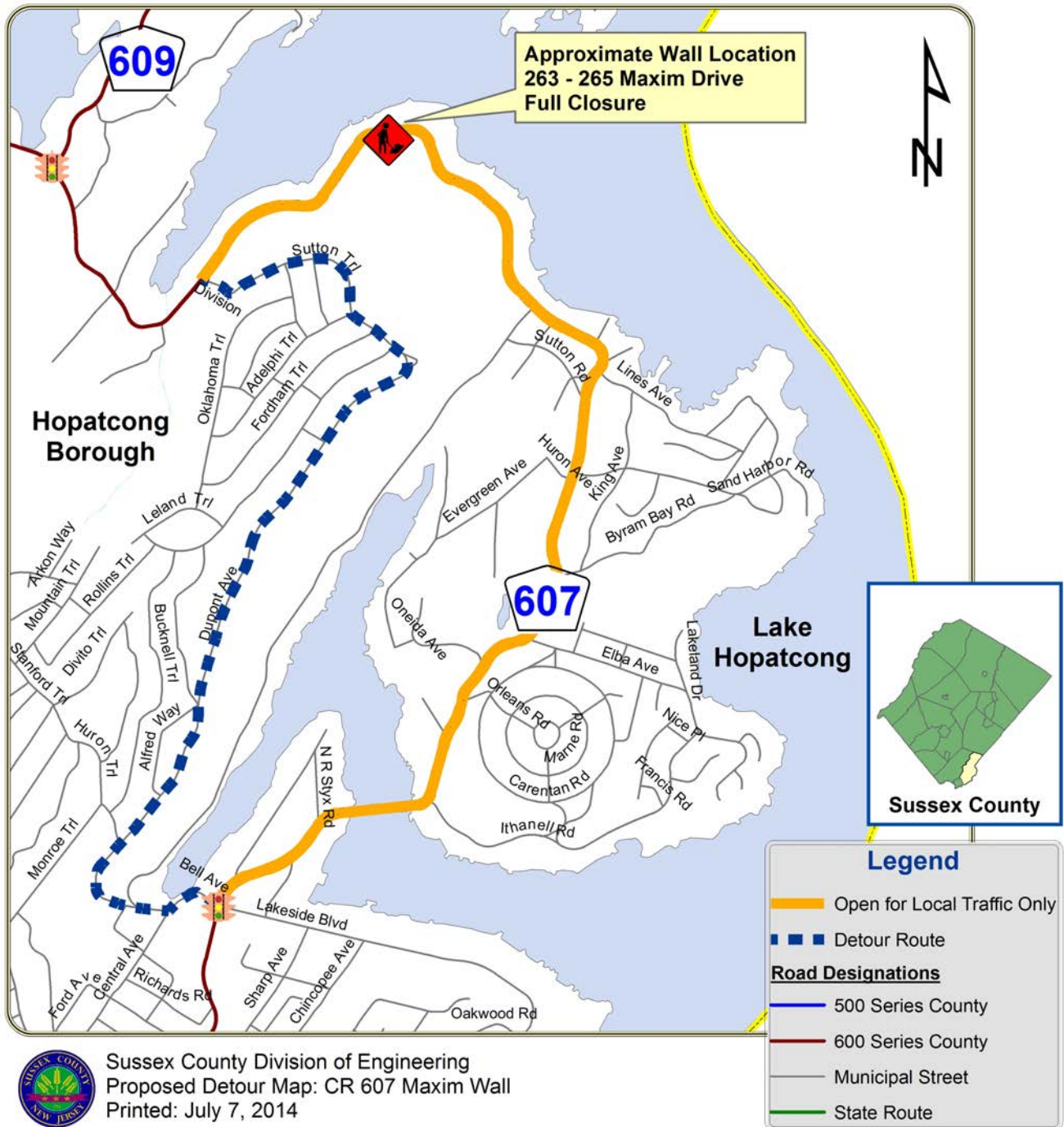
Sussex County Division of Engineering  
 County Route 607  
 Location Map - Not to Scale



DEPARTMENT OF ENGINEERING AND PLANNING  
 Division of Engineering  
 One Spring Street  
 Newton, New Jersey 07860  
 973-579-0430  
 dpw@sussex.nj.us  
 John C. Risko, P.E., P.L.S., P.P.  
 Division Director/Assistant County Engineer

**Project Notice – CR 607 Maxim Dr Wall Replacement** **Distributed: July 07, 2014**

**Map: CR 607 Wall Replacement Proposed Detour & Closure**



X:\Roads\607\06 Projects\263-265 Maxim Dr Retaining Wall\2013 Replacement\04 Design\10 Corr\20 Notices\05 Pub Outrch\20140701\_NTC\_607 Maxim Wall Design Project Update.doc