



DEPARTMENT OF ENGINEERING AND PLANNING  
Division of Engineering  
One Spring Street  
Newton, New Jersey 07860  
973-579-0430  
[dpw@sussex.nj.us](mailto:dpw@sussex.nj.us)  
John C. Risko, P.E., P.L.S., P.P.  
Division Director/Assistant County Engineer

**Pre-Construction Notice – Bridge B-01 Emergency Stabilization Repairs**  
**Distributed: September 18, 2012**

**Project:**

**Emergency Stabilization Repairs to Bridge B-01**  
Kemah Lake Road, Branchville Borough

**Contractor:**

Sparwick Contracting Inc. - \$ 74,175.00

**Schedule:**

Anticipated Construction Start Date – Wednesday  
September 19, 2012

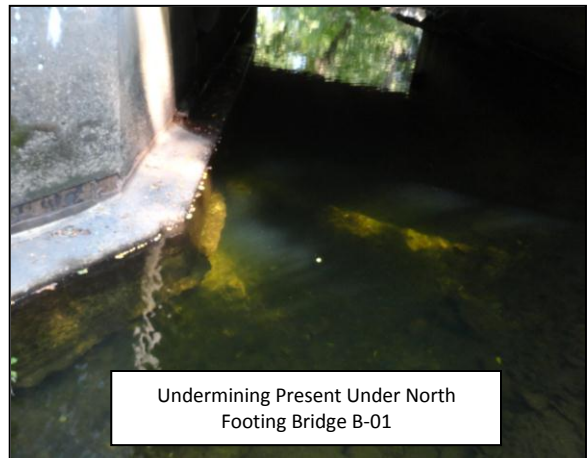
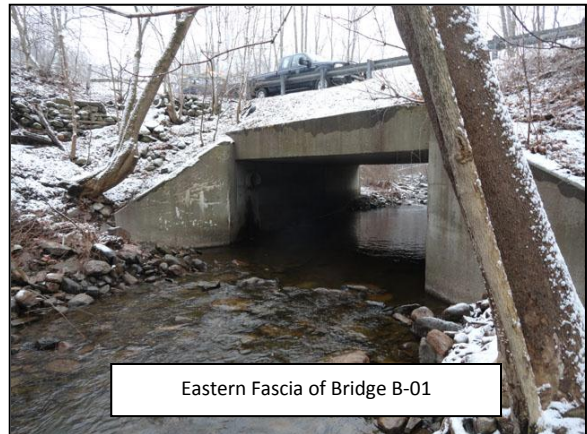
NOTE: Anticipated construction start date dependent  
upon weather/stream flow.

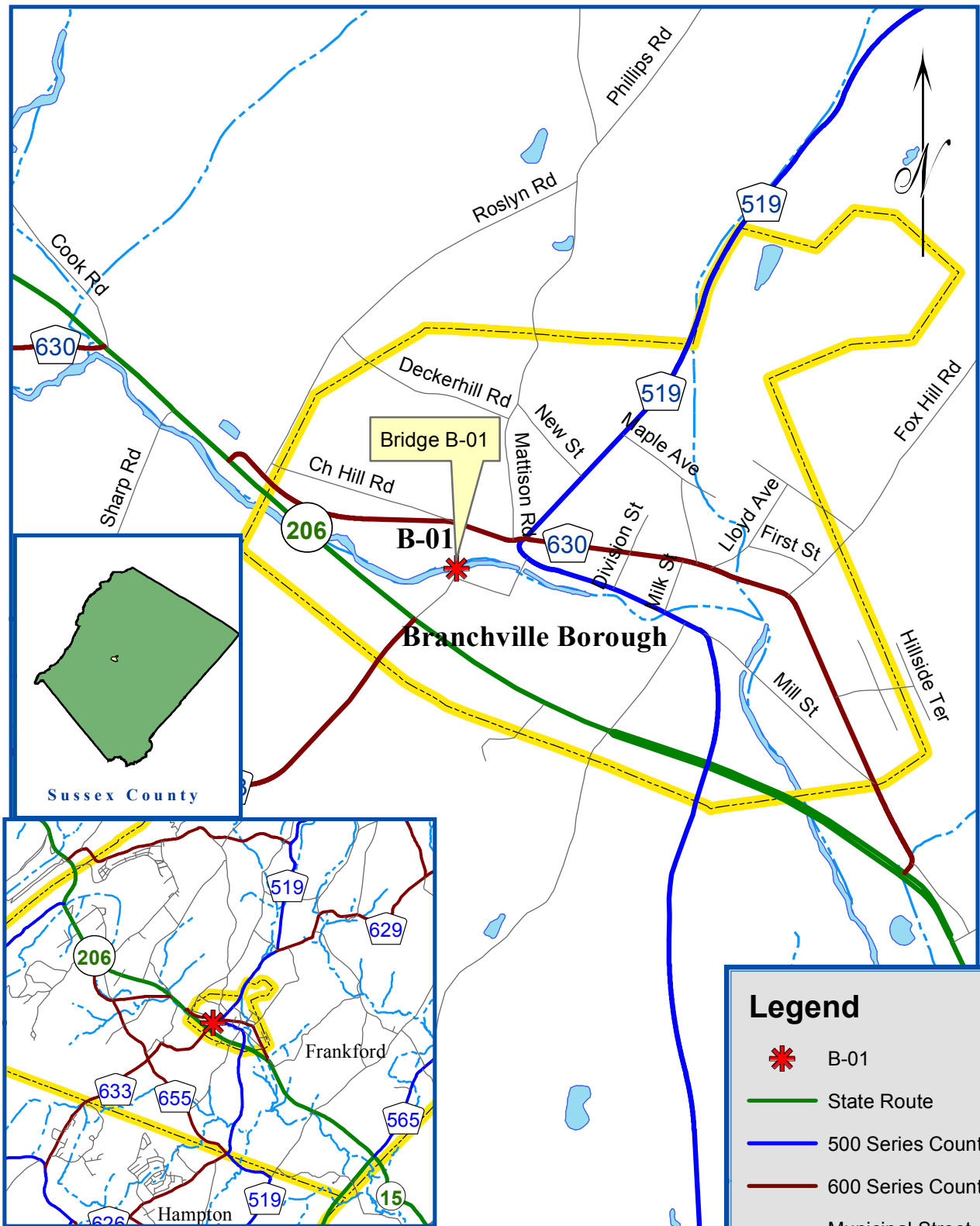
**Kemah Lake Road Closure:**

Kemah Lake Road will remain open to traffic at Bridge B-01. During construction, the contractor will utilize a flagger controlled, single lane work zone, when required.

**Contact Information:**

For more information about this project please feel free to contact Siân Pearson, Assistant Engineer, of the Sussex County Division of Engineering at 973-579-0430 or [dpw@sussex.nj.us](mailto:dpw@sussex.nj.us)





Sussex County Division of Engineering  
 County Bridge B-01  
 Kemah Lake Road - Branchville Borough  
 Location Map - Not to Scale

**Legend**

- B-01
- State Route
- 500 Series County
- 600 Series County
- Municipal Street
- Muni Bndry
- Lake
- Stream