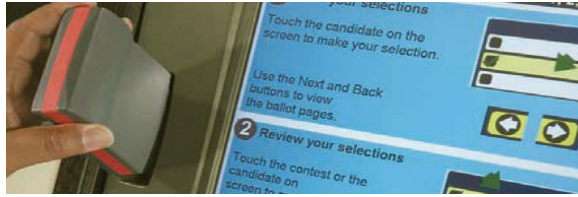


QUICK & EASY VOTING IN SUSSEX COUNTY

ES&S iVotronic HOW TO USE TOUCH SCREEN VOTING

1



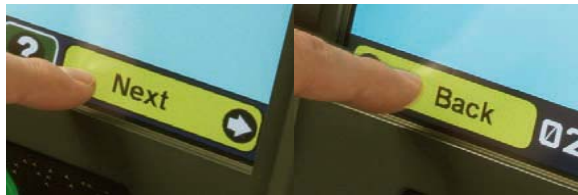
Activate and Learn - After a poll worker has activated your ballot, read the on-screen instructions and press "View Ballot" at the bottom of the screen.

2



Select - Touch the candidate or issue for which you want to cast a vote. Your selection will be highlighted in bold, and a green check mark will appear. You may change your selections at any time.

3



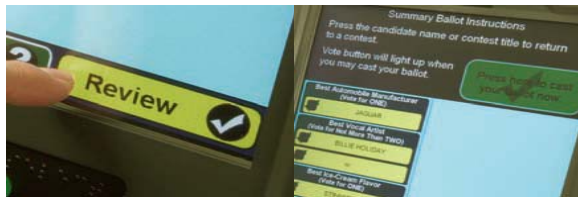
Advance - Press the "Next" button when you are ready to proceed to the next page of contests/issues. You may touch the "Back" button to return to a previous page at any time.

4



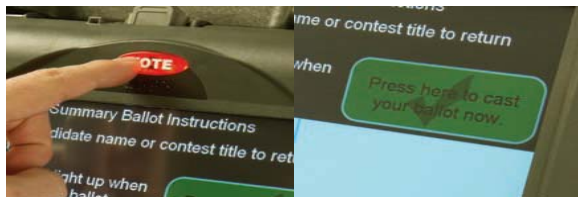
Write-in (if desired) - Touching the "Write-In" option will bring a keyboard onto your screen. Type in the name of a candidate and press "Accept." Continue making and changing selections until you complete the ballot.

5



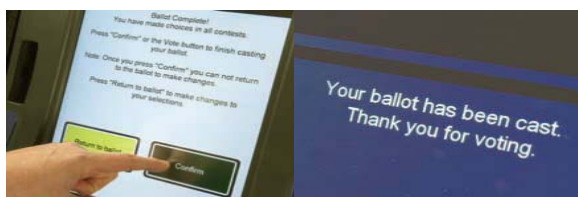
Review - Press the "Review" button after completing the last page of the ballot, and a summary screen will appear. Carefully review all selections. To change a selection, touch the box next to your desired choice. Then, touch the "Review" button to return to the summary screen.

6



Cast - Press the flashing red "Vote" button or the green check mark at the top of the screen to cast your ballot.

7



Confirm! - You will be asked to confirm your ballot one last time. Then, a "Thank you for voting" screen will appear letting you know your ballot was cast.

Thank you for voting,
Sussex County Board of Elections