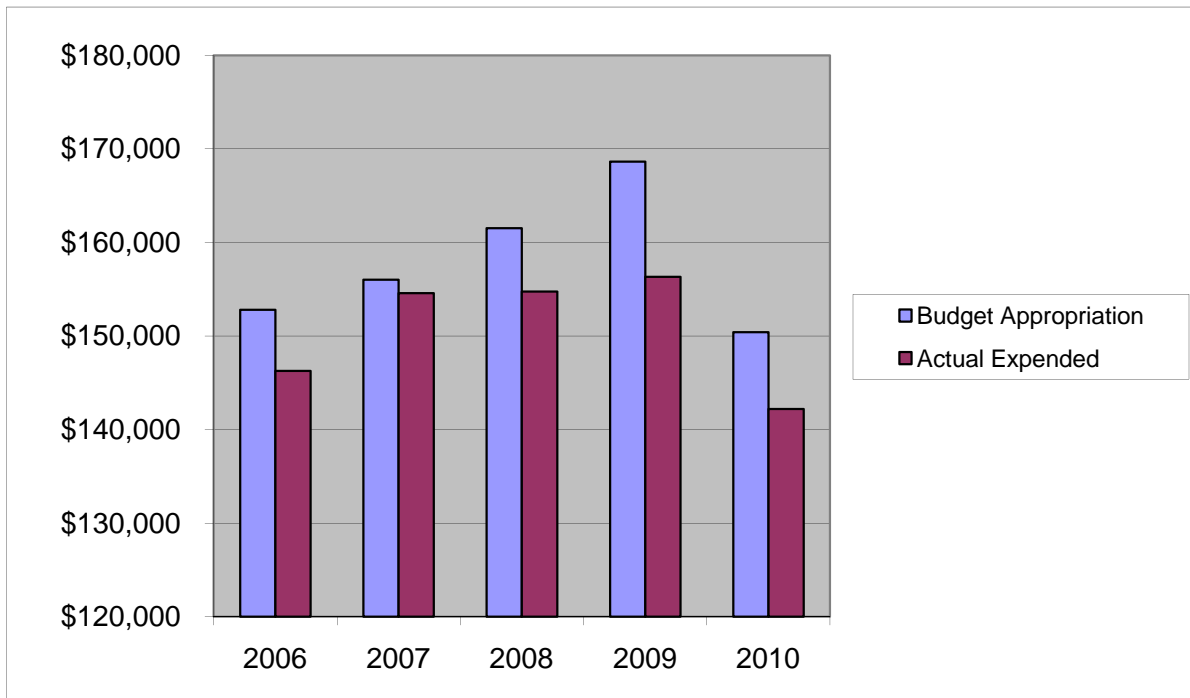


## ***WEIGHTS & MEASURES***

### ***Salaries & Wages***

	2006	2007	2008	2009	2010
Budget Appropriation	\$ 152,810.00	\$ 156,027.00	\$ 161,530.00	\$ 168,643.00	\$ 150,398.00
Actual Expended	\$ 146,282.53	\$ 154,585.56	\$ 154,754.13	\$ 156,323.16	\$ 142,205.19
Difference (App. - Exp.)	\$ 6,527.47	\$ 1,441.44	\$ 6,775.87	\$ 12,319.84	\$ 8,192.81
% Expended	95.7%	99.1%	95.8%	92.7%	94.6%
Total Budget Approp.	\$ 98,126,692	\$ 102,912,559	\$ 107,848,203	\$ 107,667,916	\$ 108,900,890
% of Total Budget Approp.	0.16%	0.15%	0.15%	0.16%	0.14%
Five Year Average (Mean) Budget Appropriation:					\$ 157,881.60
Five Year Average (Mean) Budget Expended:					\$ 150,830.11
Difference:					\$ 7,051.49



<b>2011 BUDGET APPROPRIATION:</b>	<b>\$ 128,283</b>
2010 Budget Appropriation	\$ 150,398
\$ Change	\$ (22,115)
% Change:	-14.7%

2011 Budget Appropriation	\$ 128,283
2006 Budget Appropriation	\$ 152,810
\$ Change	\$ (24,527)
% Change	-16.1%