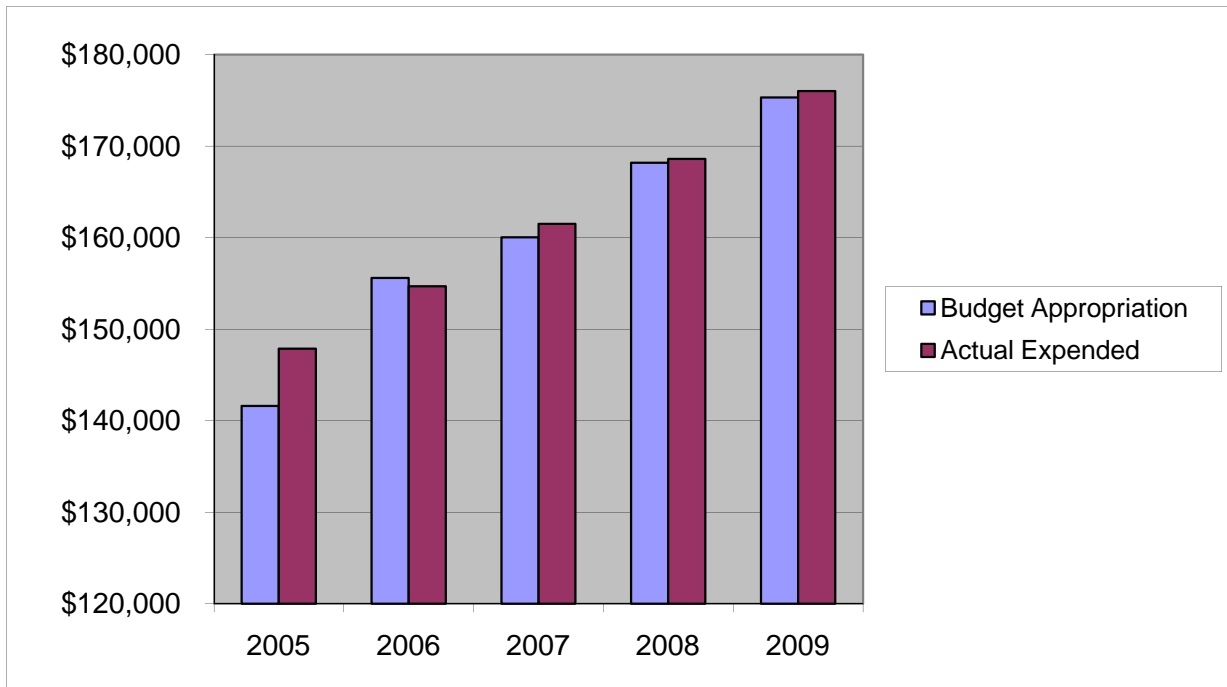


## **BOARD OF TAXATION**

### **Salaries & Wages**

	2005	2006	2007	2008	2009
Budget Appropriation	\$ 141,591.00	\$ 155,597.00	\$ 160,028.00	\$ 168,183.00	\$ 175,302.00
Actual Expended	\$ 147,864.62	\$ 154,676.84	\$ 161,503.95	\$ 168,614.38	\$ 176,004.52
Difference (App. - Exp.)	\$ (6,273.62)	\$ 920.16	\$ (1,475.95)	\$ (431.38)	\$ (702.52)
% Expended	104.4%	99.4%	100.9%	100.3%	100.4%
Total Budget Approp.	\$ 92,061,376	\$ 98,126,692	\$ 102,912,559	\$ 107,848,203	\$ 107,667,916
% of Total Budget Approp.	0.15%	0.16%	0.16%	0.16%	0.16%
Five Year Average (Mean) Budget Appropriation:					\$ 160,140.20
Five Year Average (Mean) Budget Expended:					\$ 161,732.86
Difference:					\$ (1,592.66)



<b>2010 BUDGET APPROPRIATION:</b>	<b>\$ 182,395</b>
2009 Budget Appropriation	\$ 175,302
\$ Change	\$ 7,093
% Change:	4.0%

2010 Budget Appropriation	\$ 182,395
2005 Budget Appropriation	\$ 141,591
\$ Change	\$ 40,804
% Change	28.8%