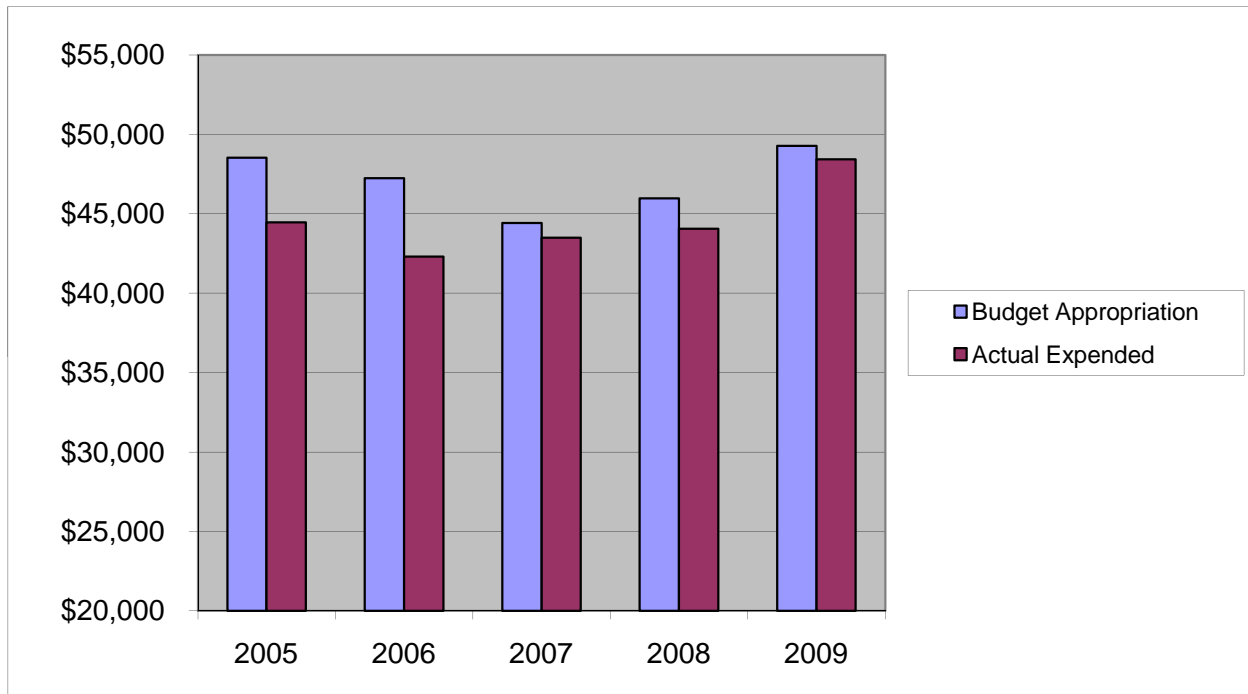


FIRE MARSHAL ***Salaries & Wages***

	2005	2006	2007	2008	2009
Budget Appropriation	\$ 48,522.00	\$ 47,239.00	\$ 44,420.00	\$ 45,975.00	\$ 49,276.00
Actual Expended	\$ 44,456.88	\$ 42,296.07	\$ 43,487.90	\$ 44,060.41	\$ 48,432.74
Difference (App. - Exp.)	\$ 4,065.12	\$ 4,942.93	\$ 932.10	\$ 1,914.59	\$ 843.26
% Expended	91.6%	89.5%	97.9%	95.8%	98.3%
Total Budget Approp.	\$ 92,061,376	\$ 98,126,692	\$ 102,912,559	\$ 107,848,203	\$ 107,667,916
% of Total Budget Approp.	0.05%	0.05%	0.04%	0.04%	0.05%
Five Year Average (Mean) Budget Appropriation:					\$ 47,086.40
Five Year Average (Mean) Budget Expended:					\$ 44,546.80
Difference:					\$ 2,539.60



2010 BUDGET APPROPRIATION:	\$ 50,179
2009 Budget Appropriation	\$ 49,276
\$ Change	\$ 903
% Change:	1.8%

2010 Budget Appropriation	\$ 50,179
2005 Budget Appropriation	\$ 48,522
\$ Change	\$ 1,657
% Change	3.4%